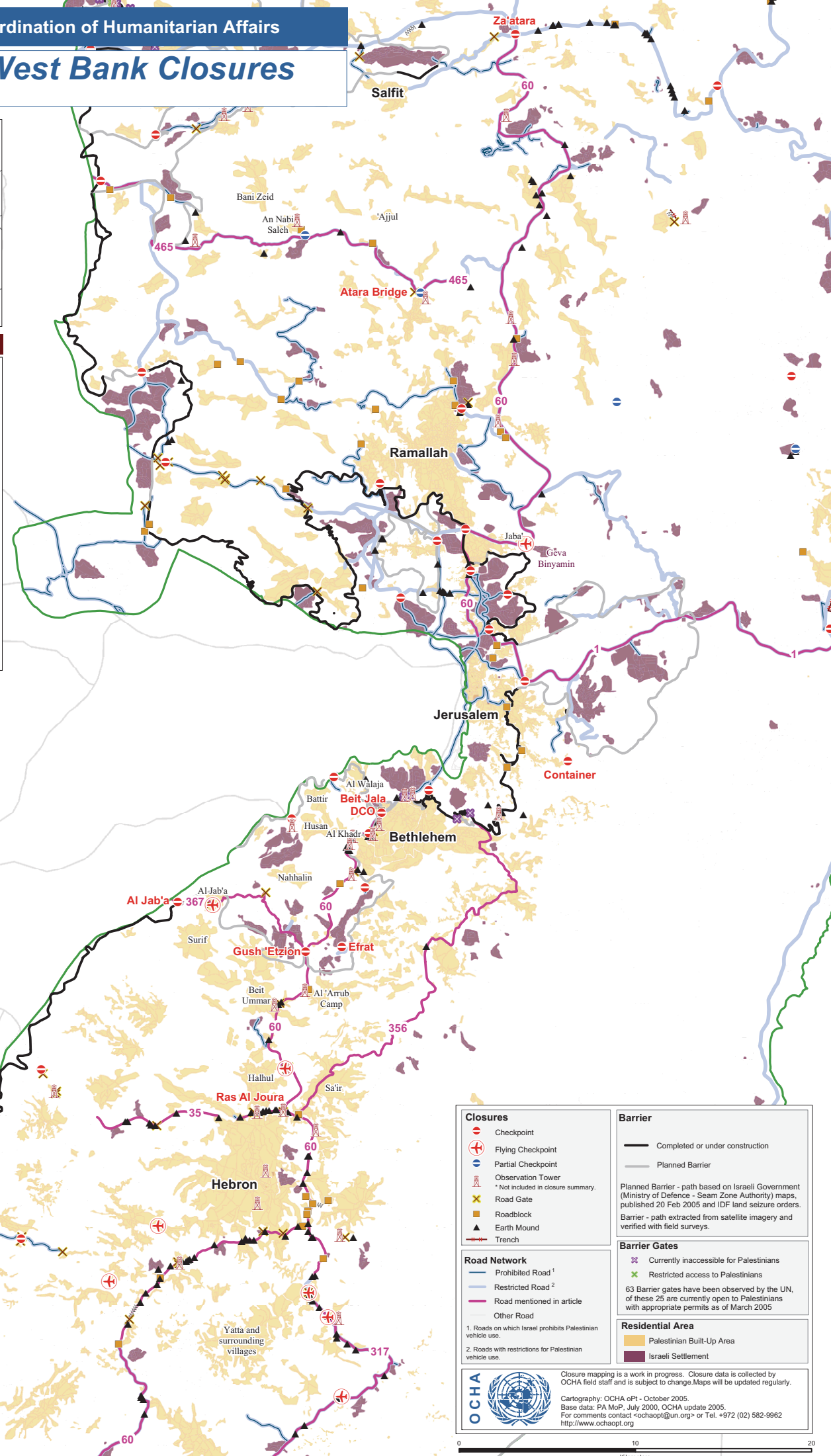
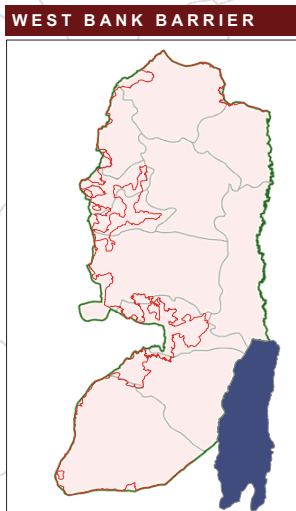


Additional West Bank Closures

18 October 2005



<p>Closures</p> <ul style="list-style-type: none"> Checkpoint Flying Checkpoint Partial Checkpoint Observation Tower Road Gate Roadblock Earth Mound Trench <p><small>* Not included in closure summary.</small></p>	<p>Barrier</p> <ul style="list-style-type: none"> Completed or under construction Planned Barrier <p><small>Planned Barrier - path based on Israeli Government (Ministry of Defence - Seam Zone Authority) maps, published 20 Feb 2005 and IDF land seizure orders.</small></p> <p><small>Barrier - path extracted from satellite imagery and verified with field surveys.</small></p>
<p>Road Network</p> <ul style="list-style-type: none"> Prohibited Road¹ Restricted Road² Road mentioned in article Other Road <p><small>1. Roads on which Israel prohibits Palestinian vehicle use.</small></p> <p><small>2. Roads with restrictions for Palestinian vehicle use.</small></p>	<p>Barrier Gates</p> <ul style="list-style-type: none"> Currently inaccessible for Palestinians Restricted access to Palestinians <p><small>63 Barrier gates have been observed by the UN, of these 25 are currently open to Palestinians with appropriate permits as of March 2005</small></p>
<p>Residential Area</p> <ul style="list-style-type: none"> Palestinian Built-Up Area Israeli Settlement 	
<p>OCHA </p> <p><small>Closure mapping is a work in progress. Closure data is collected by OCHA field staff and is subject to change. Maps will be updated regularly.</small></p> <p><small>Cartography: OCHA oPT - October 2005</small></p> <p><small>Base data: PA MoF, July 2000, OCHA update 2005.</small></p> <p><small>For comments contact ochoapt@un.org or Tel. +972 (02) 582-9962</small></p> <p><small>http://www.ochoapt.org</small></p>	