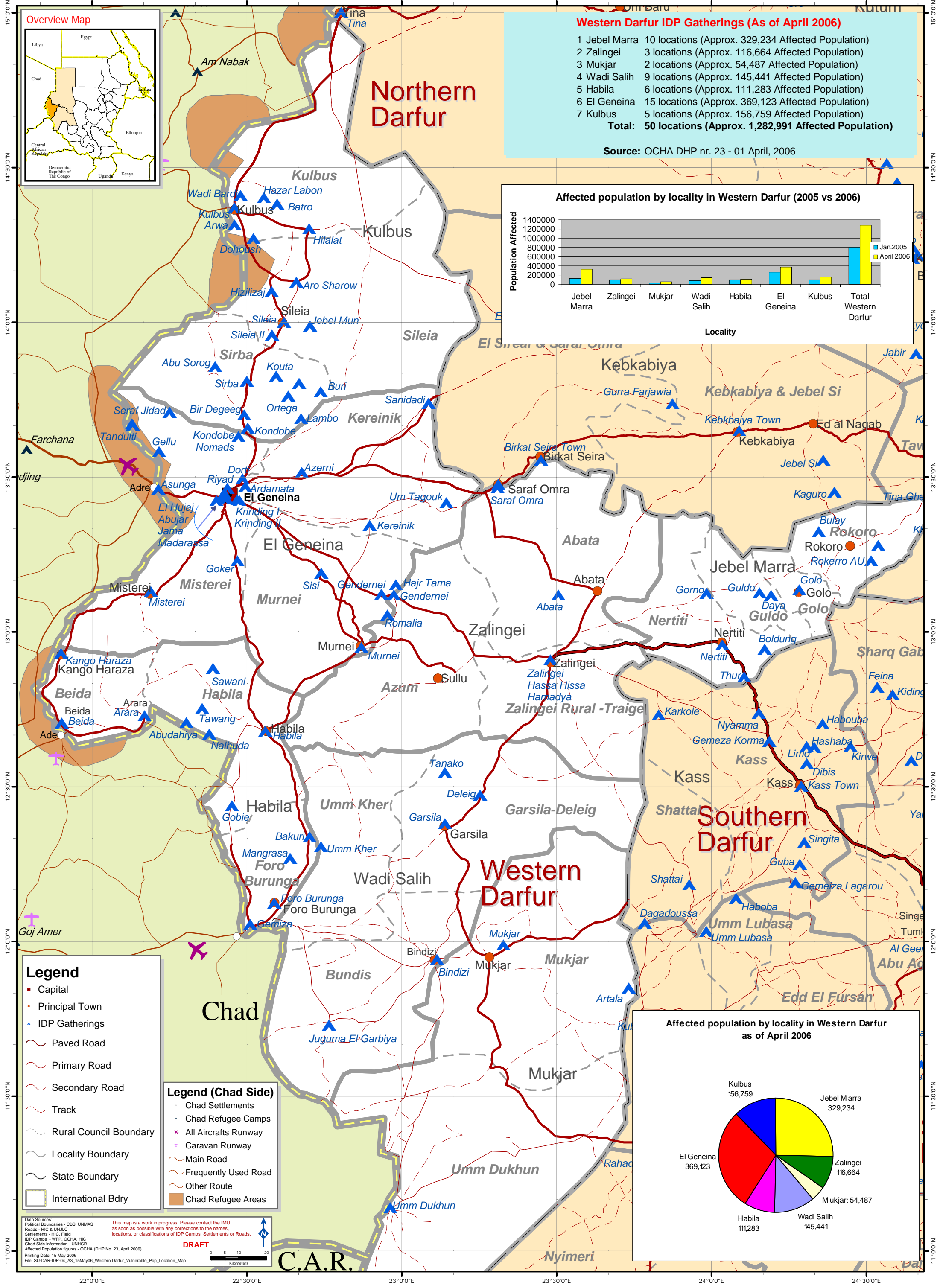


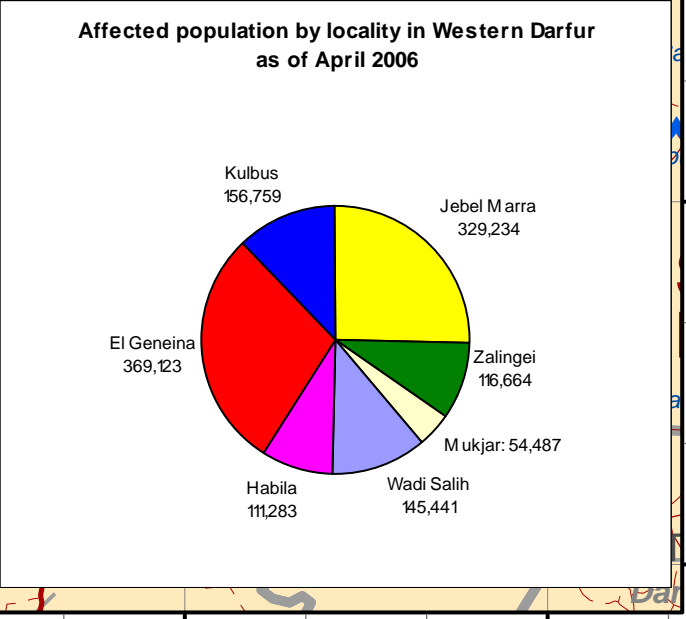
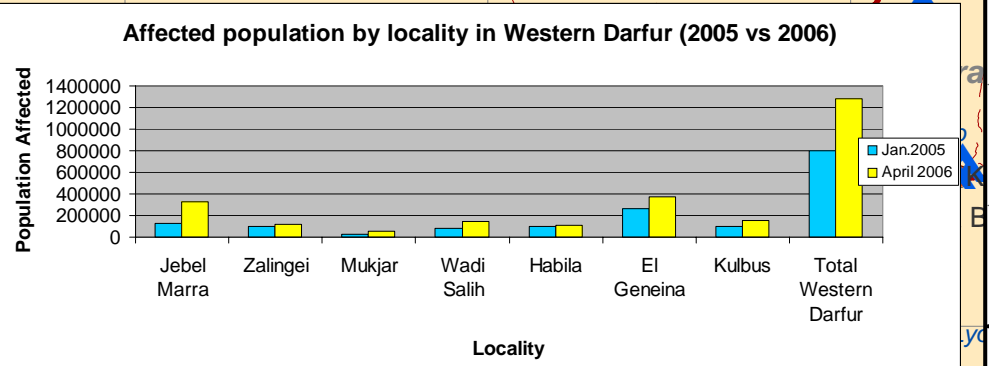
# Western Darfur IDP Gatherings Map



**Western Darfur IDP Gatherings (As of April 2006)**

1	Jebel Marra	10 locations (Approx. 329,234 Affected Population)
2	Zalingei	3 locations (Approx. 116,664 Affected Population)
3	Mukjar	2 locations (Approx. 54,487 Affected Population)
4	Wadi Salih	9 locations (Approx. 145,441 Affected Population)
5	Habila	6 locations (Approx. 111,283 Affected Population)
6	El Geneina	15 locations (Approx. 369,123 Affected Population)
7	Kulbus	5 locations (Approx. 156,759 Affected Population)
<b>Total:</b>		<b>50 locations (Approx. 1,282,991 Affected Population)</b>

Source: OCHA DHP nr. 23 - 01 April, 2006



- Legend**
- Capital
  - Principal Town
  - IDP Gatherings
  - Paved Road
  - Primary Road
  - Secondary Road
  - Track
  - Rural Council Boundary
  - Locality Boundary
  - State Boundary
  - International Bdry
- Legend (Chad Side)**
- Chad Settlements
  - Chad Refugee Camps
  - All Aircrafts Runway
  - Caravan Runway
  - Main Road
  - Frequently Used Road
  - Other Route
  - Chad Refugee Areas

Data Sources: Political Boundaries - CBS, UNMAS; Roads - HIC & UNLCC; Settlements - HIC, Field; IDP Camps - WFP, OCHA, HIC; Chad Side Information - UNHCR; Affected Population figures - OCHA (DHP No. 23, April 2006); Printing Date: 15 May 2006; File: SU-DAR-IDP-04\_A3\_15May06\_Western Darfur\_Vulnerable\_Pop\_Location\_Map

**DRAFT**

\* Locality boundaries are not complete for South Darfur. The boundaries and names shown do not imply official endorsement or acceptance by the Government of Sudan or the United Nations.