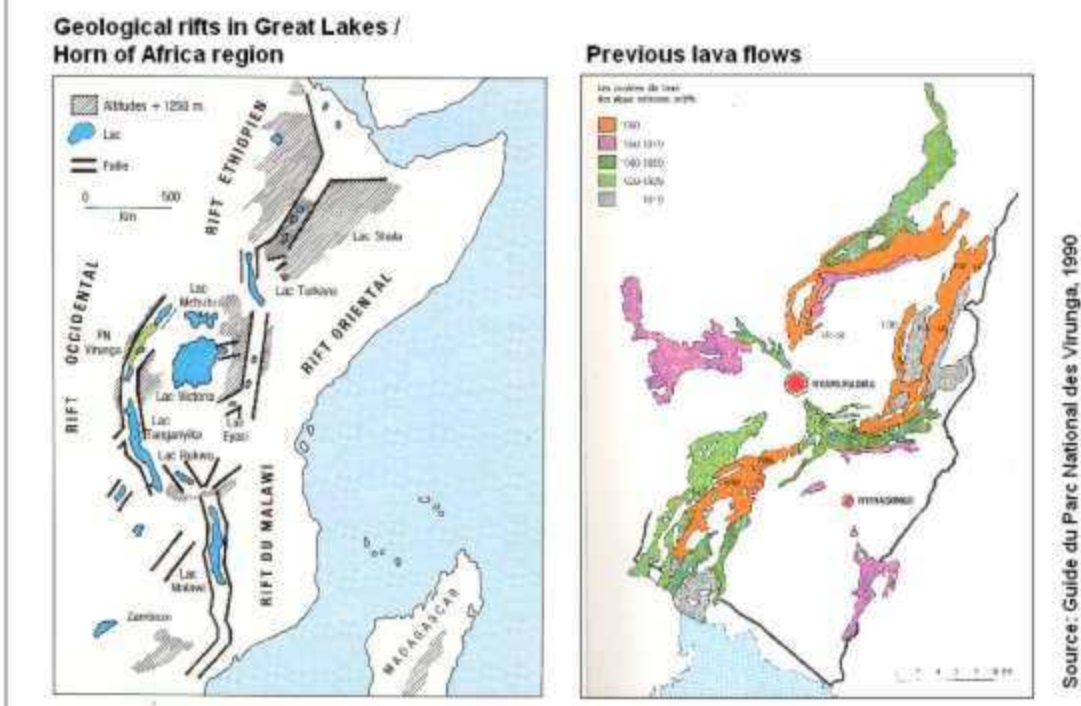


Note: Aerial photos are not georeferenced.  
USGS estimated dataflow imported and visually overlaid from  
Latitude/Longitude projection and WGS84 SUTM35 datum.  
The two assessments can therefore not be directly compared.

**Disclaimer:**  
Aerial photo mosaic based on manual/visual  
interpretation with downtown Goma having  
highest weight for matching scenes.  
North-arrow and grid are only indicative.

- Estimated lava flow as derived from OCHA reports  
(see map-inset above) and 20 January aerial photos
- Estimated extent of lava flow as derived by US Geological Survey
- Boundary not known

October 1995 aerial photos visually mosaiced.  
Original black&white photos by Photomap Inc., Nairobi.  
Original scale of aerial photos: 1:10,000  
Colour photographs from 20 January 2002 UN assessment mission  
(MONUC helicopter) by Antti Vennala  
Image analysis: UNHCR Geographic Information and Mapping Unit (GIMU)



D:\Map\Workspace\Country\DR Congo\WV\goma\_volcano\_aerial\_new.vor

Source: Guide du Parc National des Virunga, 1990