

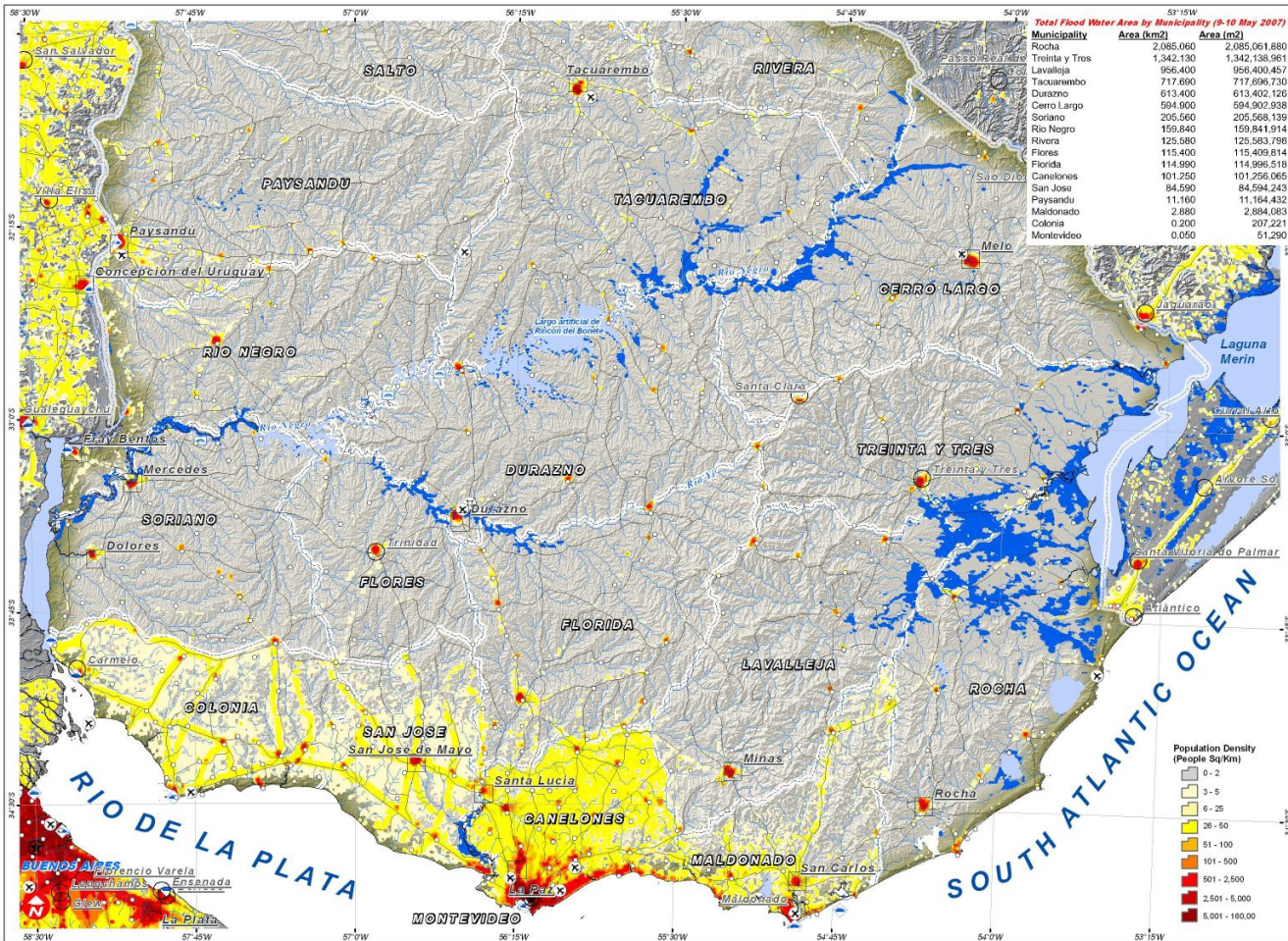
# Population Density (2004) & Flooded Areas in Uruguay

Identification of Likely Flooded Areas from MODIS-Terra Imagery (Recorded 19 April & 9-10 May 2007)

16 May 2007

Version 1.0

Glide No: FL-2007-000057-URY



**Total Flood Water Area by Municipality (9-10 May 2007)**

Municipality	Area (km <sup>2</sup> )	Area (m <sup>2</sup> )
Rocha	2,985,060	2,985,061,880
Trointa y Tres	1,342,130	1,342,138,961
Lavalleja	956,400	956,400,457
Tacuarembó	717,690	717,696,730
Durazno	613,400	613,402,126
Cerro Largo	594,900	594,902,938
Soriano	205,560	205,568,139
Río Negro	159,840	159,841,914
Rivera	125,580	125,583,798
Flores	115,400	115,409,814
Florida	114,990	114,996,518
Canelones	101,250	101,256,065
San José	84,590	84,594,243
Paysandu	11,160	11,164,432
Maldonado	2,880	2,884,083
Colonia	0,200	207,221
Montevideo	0,050	51,290



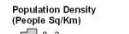
### Map Information

This map illustrates in dark blue those areas likely covered with standing flood waters over the affected Municipalities in Uruguay. This analysis was made using pre and post-flooding MODIS-Terra Rapid Response imagery recorded on 19 April and 9-10 May 2007. The estimated total area of flood waters has been calculated for each of the affected Municipalities. This flood detection is a preliminary analysis and has not yet been validated in the field.

The depiction and use of boundaries, geographic names and related data shown here are not warranted to be error-free nor do they imply official endorsement or acceptance by the United Nations. This map was produced by the United Nations Institute for Training and Research (UNITAR) Operational Satellite Applications Programme (UNOSAT). UNOSAT provides satellite imagery and related geographic information to UN humanitarian and development agencies and their implementing partners.

**Map Legend**

- ★ Capital
- City
- Town/City
- Village
- Airfield
- Port
- Dam
- Flood Waters
- Lake/ Main River
- Municipality Boundary
- Airfield
- Road
- Drainage Line



**Map Scale 1:1,600,000 for A3 Print**

0 5 10 20 30 40 50 Kilometers

Satellite Data: MODIS-Terra (Rapid Response) 250m  
 Population Data: LandScan 250m  
 Image Date: 19 April 2007 & 9-10 May 2007  
 River Data: USGS HydroSheds  
 Flood Detection: UNOSAT  
 Map Production: UNOSAT (16 May 2007)  
 Projection: UTM Zone 21S (WGS 1984)

**UNOSAT** satellite imagery for all  
 www.unosat.org  
 Contact information: info@unosat.org  
 247 Hotline: +41 76 487 4998