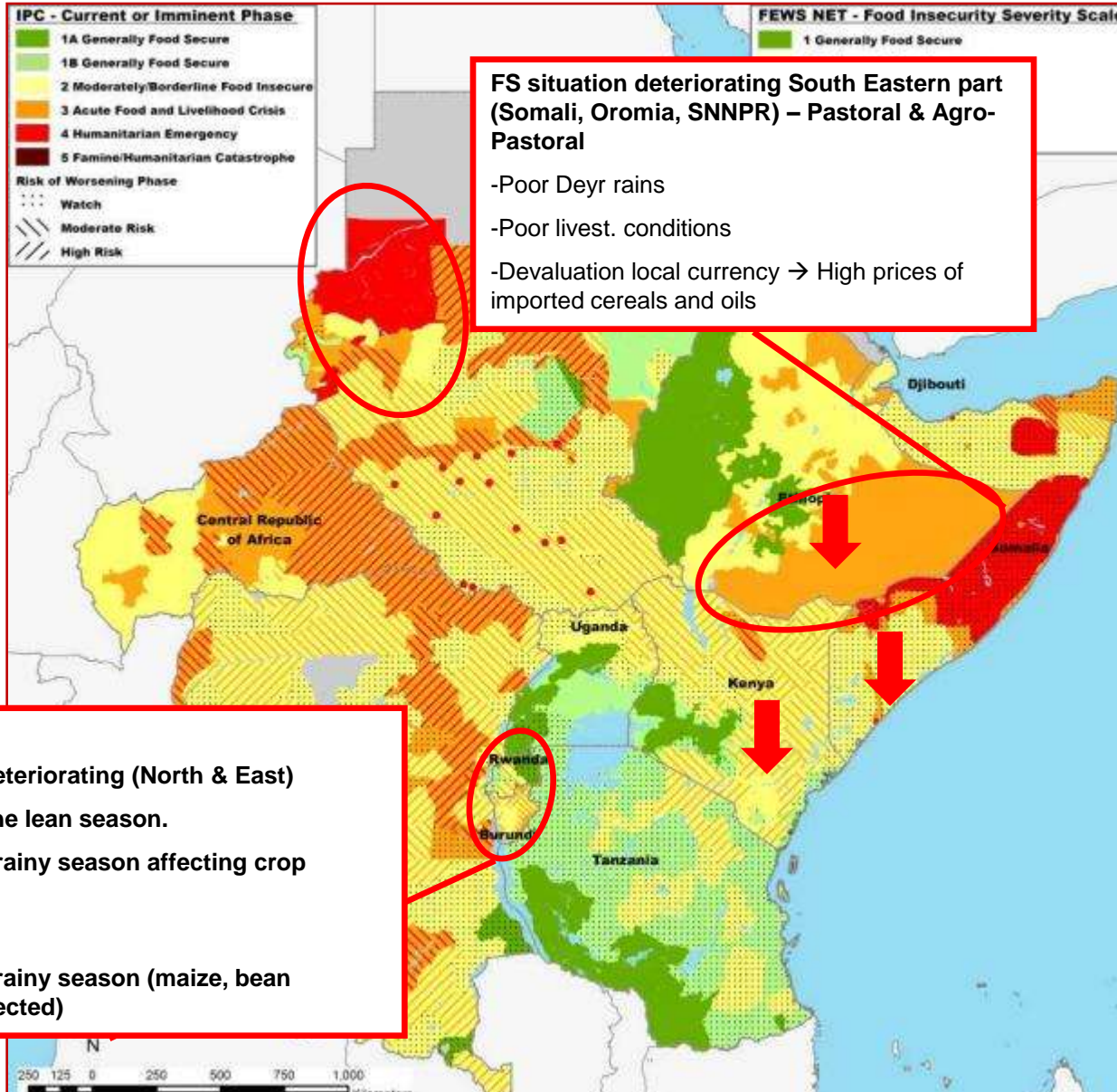


# Regional FS Situation – January 2011 (areas of concern)



**FS situation deteriorating South Eastern part (Somali, Oromia, SNNPR) – Pastoral & Agro-Pastoral**

- Poor Deyr rains
- Poor livest. conditions
- Devaluation local currency → High prices of imported cereals and oils

Burundi:

**FS Situation deteriorating (North & East)**

Extension of the lean season.

Late onset of rainy season affecting crop production;

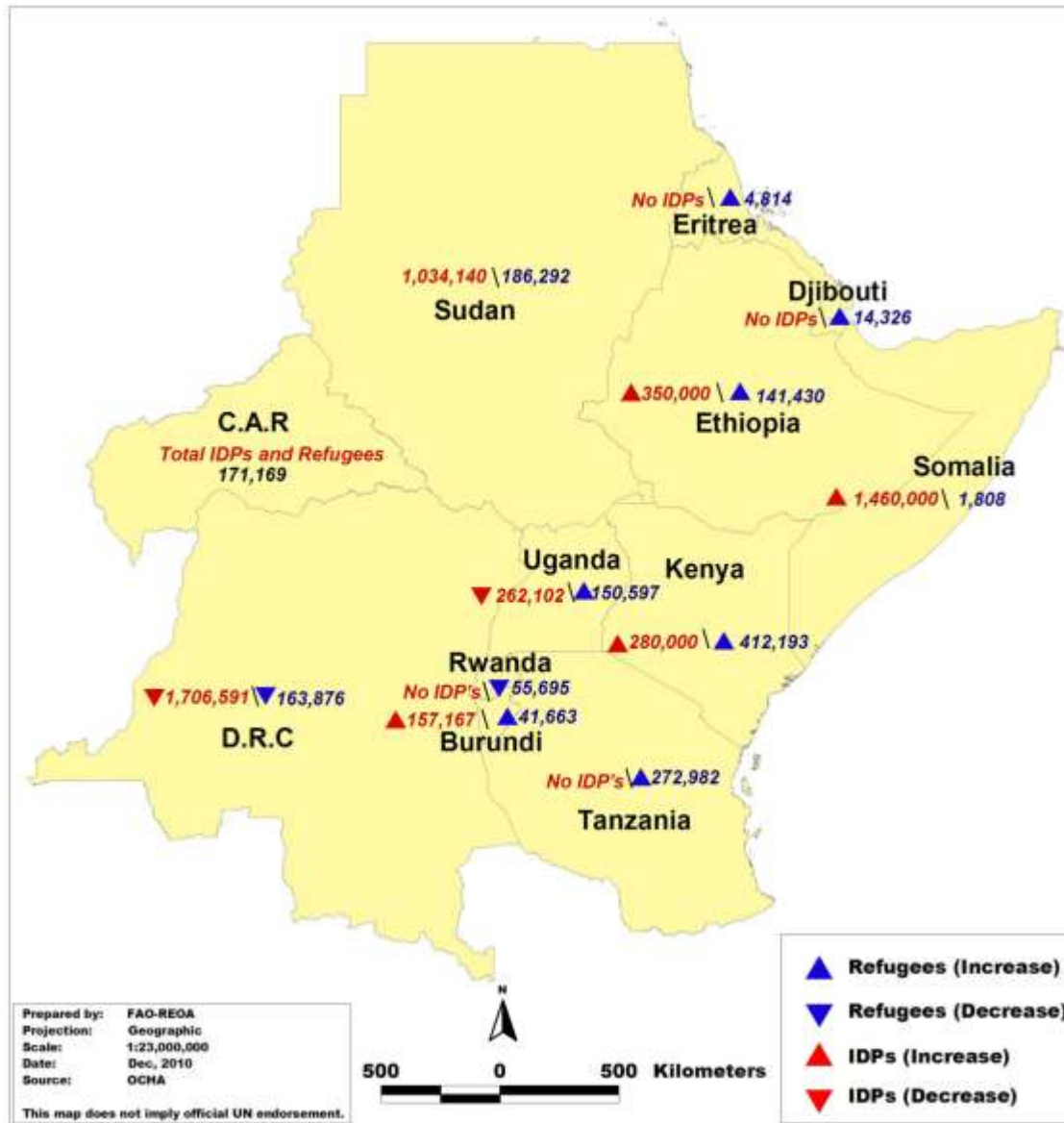
Rwanda:

Late onset of rainy season (maize, bean production affected)

Some country maps are now outdated (e.g. Kenya, Somalia...). Current FS situation is expected to be worst, particularly in areas affected by La Niña event (Kenya, Somalia, Ethiopia...)

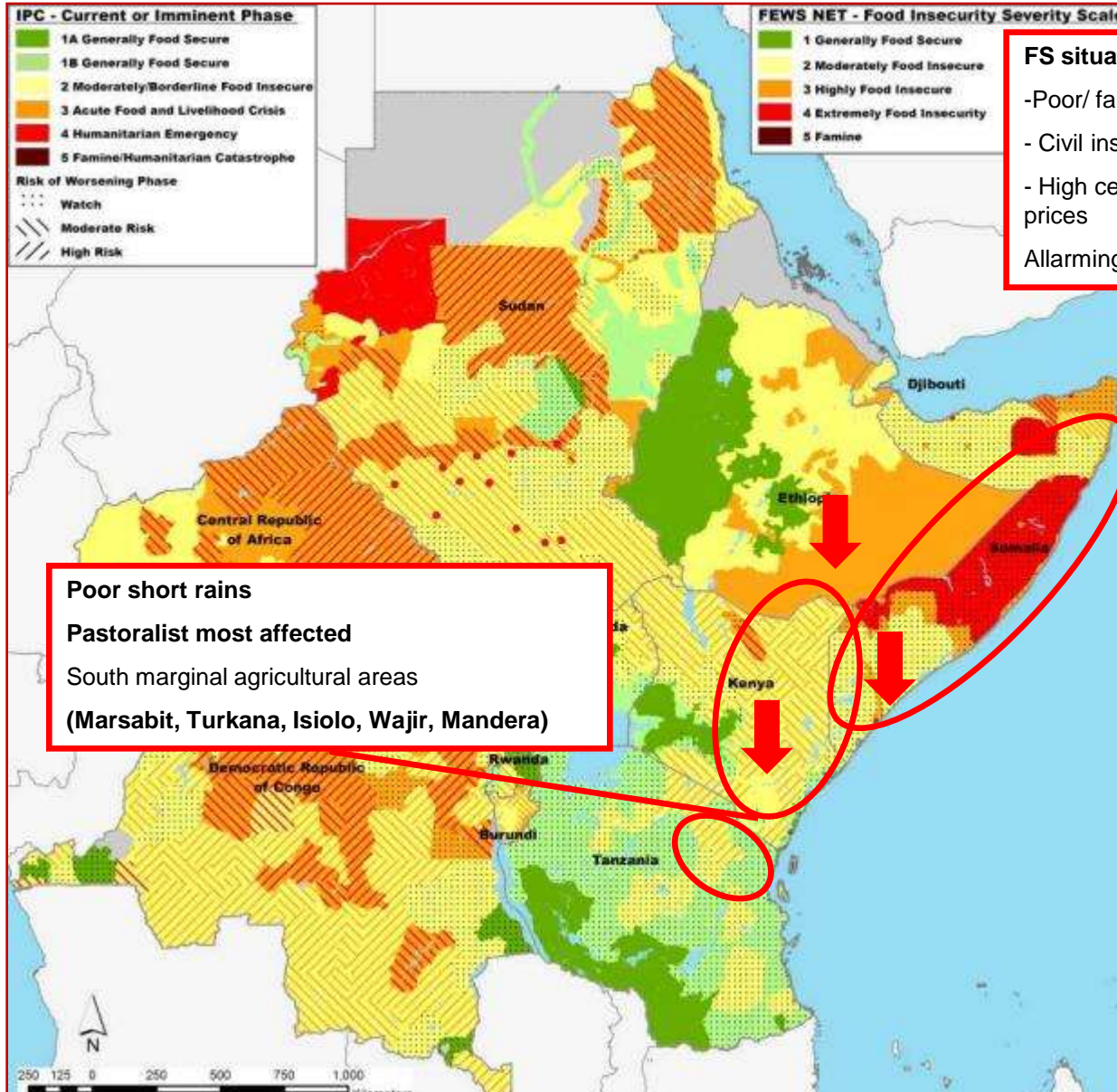
# Internally Displaced and Refugees

Total 6 867 000



Source: OCHA, UNHCR

# Regional FS Situation – January 2011 (areas of concern)



**FS situation deteriorating**

- Poor/ failed Deyr rains
- Civil ins./ displacements
- High cereal prices/ low livestock prices
- Allarming malnutrition rates

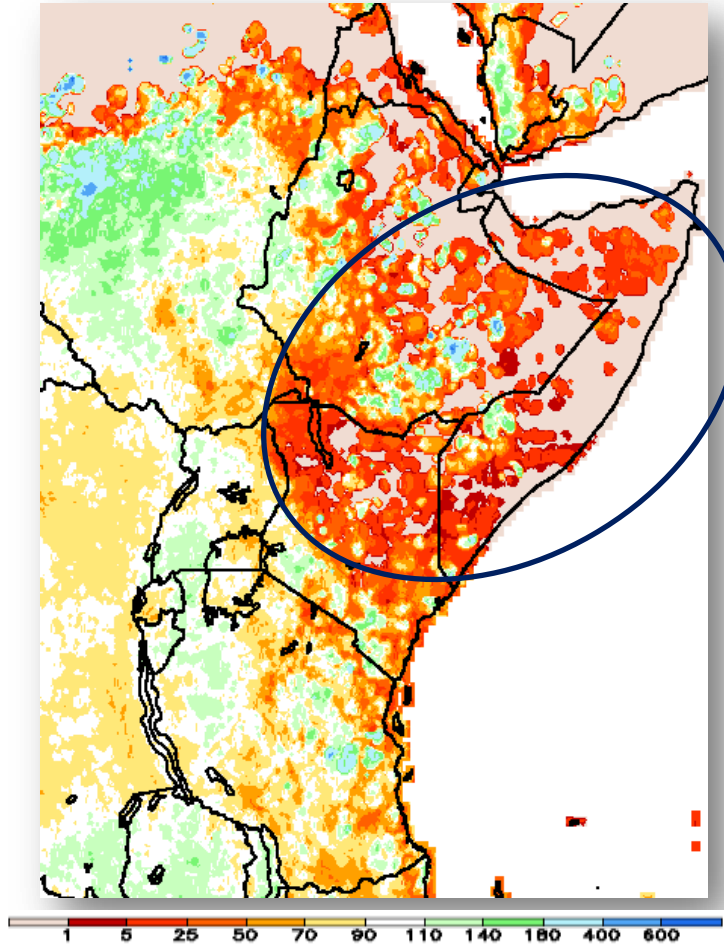
**Poor short rains**  
**Pastoralist most affected**  
 South marginal agricultural areas  
**(Marsabit, Turkana, Isiolo, Wajir, Mandera)**

Some country maps are now outdated (e.g. Kenya, Somalia...). Current FS situation is expected to be worst, particularly in areas affected by La Niña event (Kenya, Somalia, Ethiopia...)



# Rainfall performance: Oct – Dec. 2010

Rainfall Estimate Totals (mm): 1 Oct. – 31 Dec. 2010

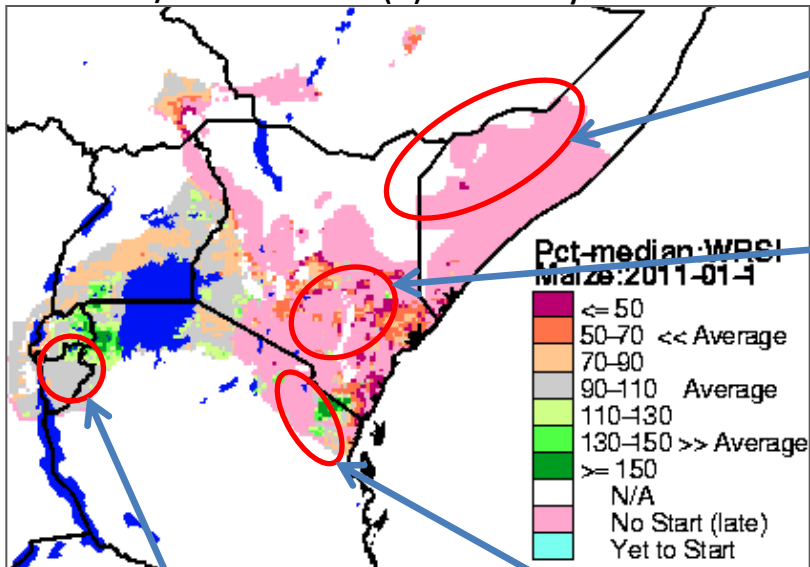


- ❑ Very poor overall seasonal rainfall performance in the eastern sector (La Niña event)
- ❑ Drought conditions emerging in pastoral and marginal agricultural livelihoods zones (Somalia, N Kenya, E and S Ethiopia in particular)
- ❑ Other parts of the region generally wet

*Source: NOAA/CPC*

# Current Crop Conditions and Vegetation Anomalies

WRSI/Maize Anomalies (%): 10 January 2011



Crop failures in rain-fed agricultural areas of Somalia due to erratic rainfall and water stress.

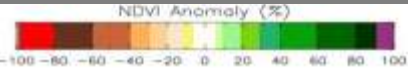
Very poor harvest prospects in southeastern lowlands and coastal marginal of Kenya

Late start of season to lead to reduced output and potential overlap of season 2011A and 2011B in Burundi

Late start of season and poor Oct –Dec *Vuli* rains in parts of northeastern Tanzania to lead to significant reduction in harvests

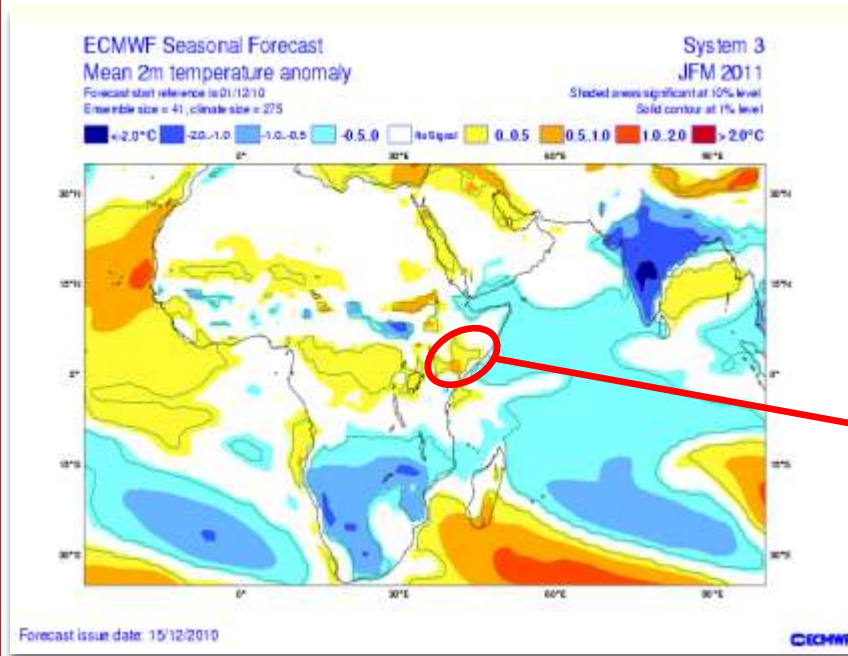
Serious **water and pasture shortages** leading to abnormal migration and early water trucking

Drier-than-normal rangelands conditions are rapidly expanding.

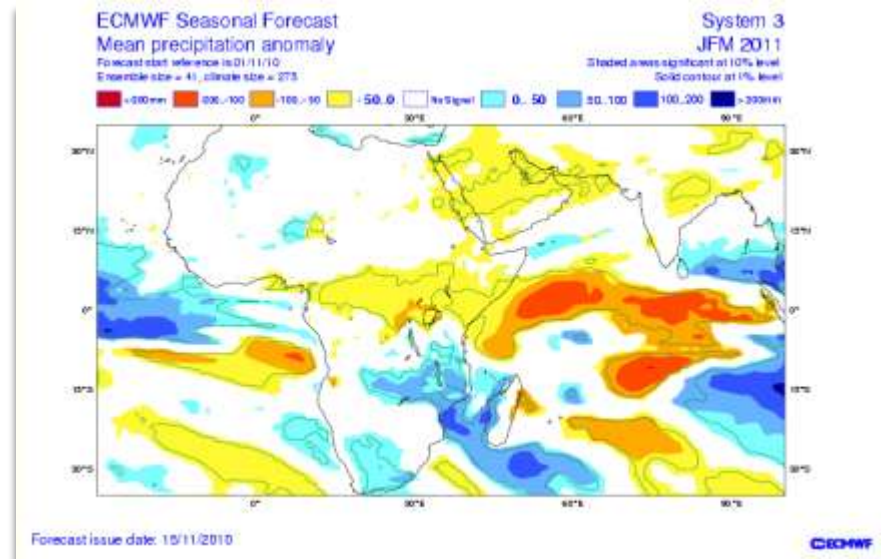


Source: USGS/FEWS NET & USDA/Spot Vegetation

# Temperature/ Rainfall Forecasts (JFM)



N. Kenya, S. and C. Somalia, parts of Ethiopia likely to be **hotter than normal**, worsening drought conditions



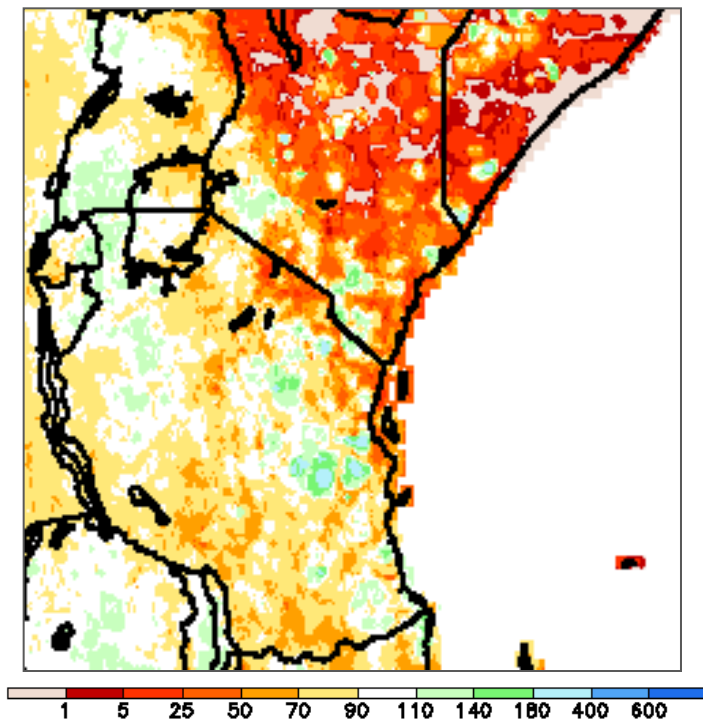
The **eastern** sector to remain **drier than normal**

The bulk of the main rainfall belt shifted into Tanzania and southern states

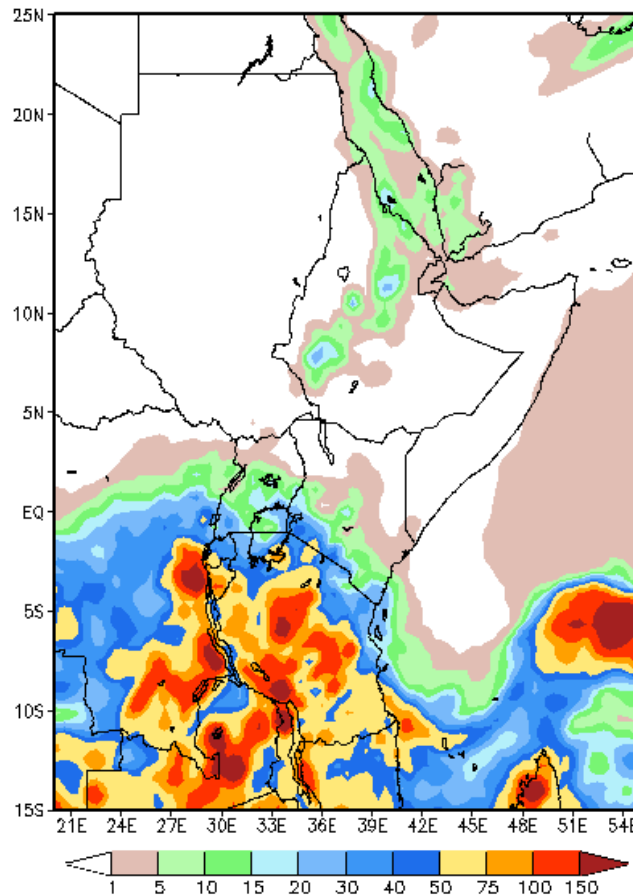
Source: ECMWF

**Rainfall deficits across Tanzania** are expected to **improve** as the seasonal rains are forecast to intensify in the country for the coming weeks....

RFE Percent of Normal (%): 1 Oct. – 11 Jan. 2011



NOAA GFS 37.5 km Week 1 Total Precipitation (mm)  
Issued at Jan 12 2011 00Z for the period ending at Jan 19 2011 00Z



.....these rains may also be **beneficial** for the **southern districts of Kenya** bordering Tanzania..