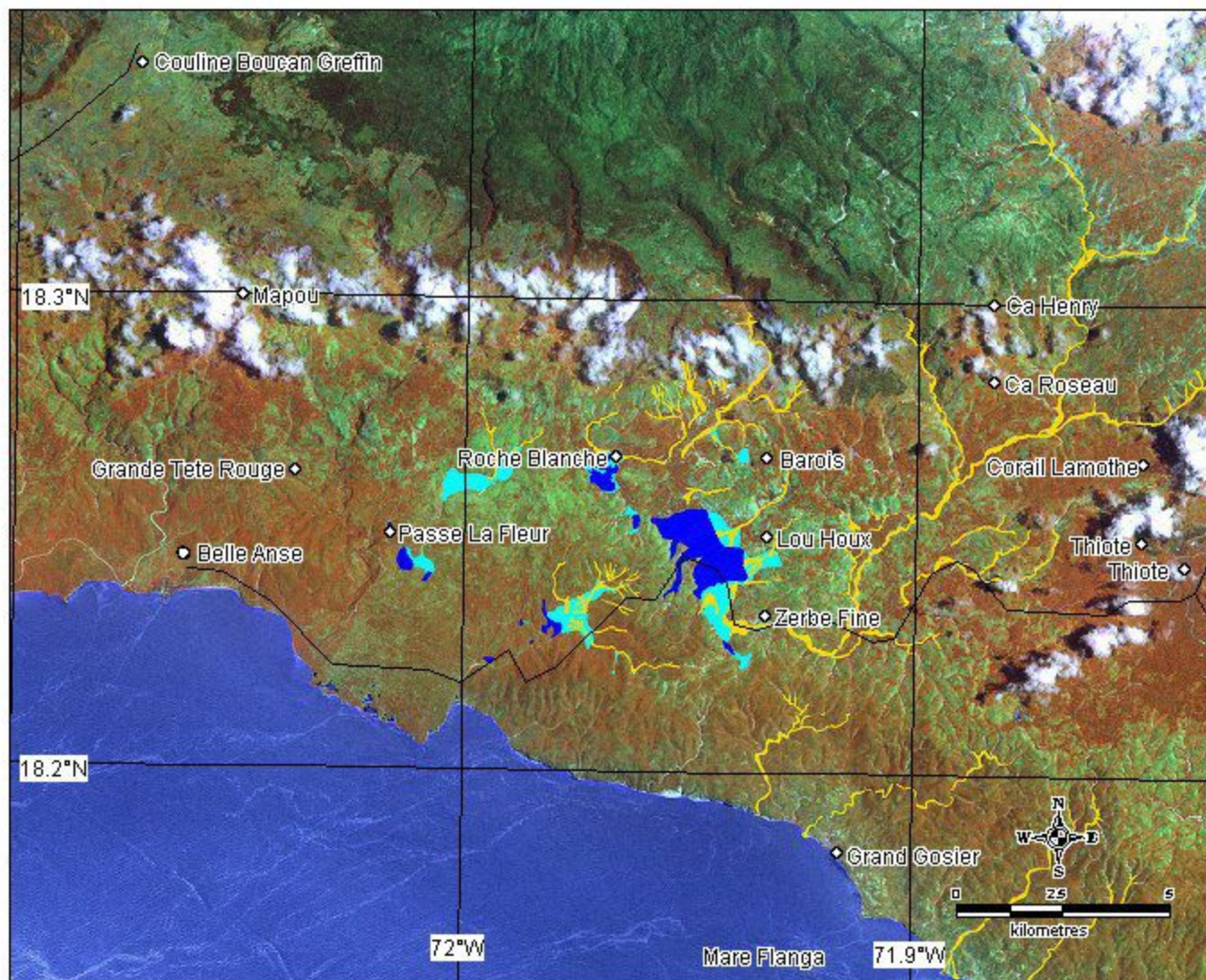





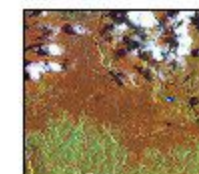
For this disaster, custom maps can be created for humanitarian staff. Please contact charter@unosat.org or telephone +41 22 767 4020

Belle Anse and surroundings Haiti Damage assessment



Legend

-  Surface water
-  Areas potentially affected by floods
-  Eroded riverbeds and flood deposits



Satellite image background map, w/clouds

Disaster type: Floods and landslides
Disaster date: 25 May 2004 (ongoing)
Data source: CNES, Spot Image, SPOT 5
Resolution: 2.5 m
Image acquisition date: 31 May 2004
Datum: WGS84
Projection: UTM Zone 19 North
Map created 3 June 2004.

The International Charter on Space and Major Disasters aims at providing a unified system of space data acquisition and delivery to those affected by natural or man-made disasters through authorized users. Since 1 July 2003 the Charter is available to support the United Nations with satellite imagery. Contact the UN Office for Outer Space Affairs for further information (ooasa@unvienna.org).

The depiction and use of boundaries, geographic names and related data shown here are not warranted to be error free nor do they necessarily imply official endorsement or acceptance by the United Nations.

This map was produced by the UNOSAT project headed by UNITAR and executed by UNOPS. UNOSAT is a UN-Private consortium providing satellite imagery and related geographic information to UN humanitarian and development agencies and their implementing partners. See www.unosat.org for further information.



UNOSAT
satellite imagery for all
www.unosat.org

