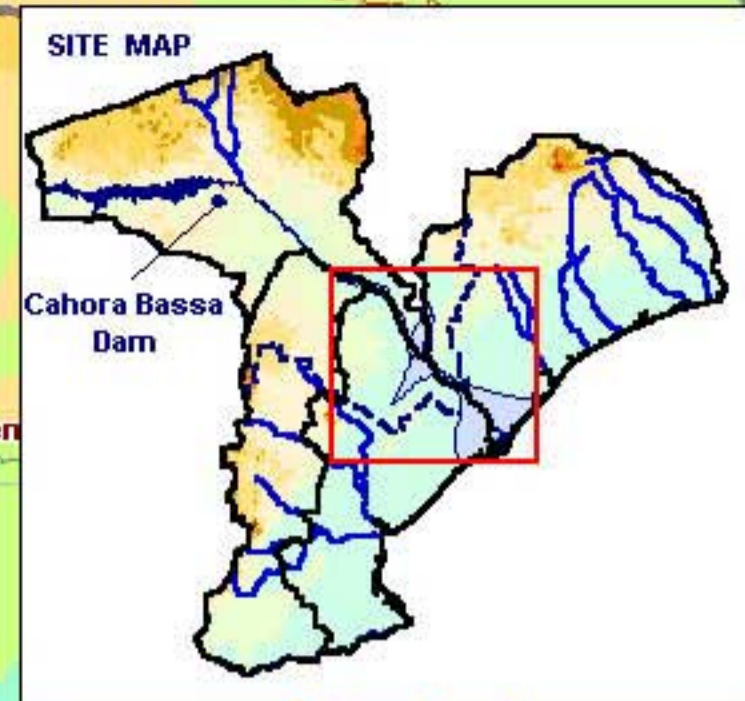
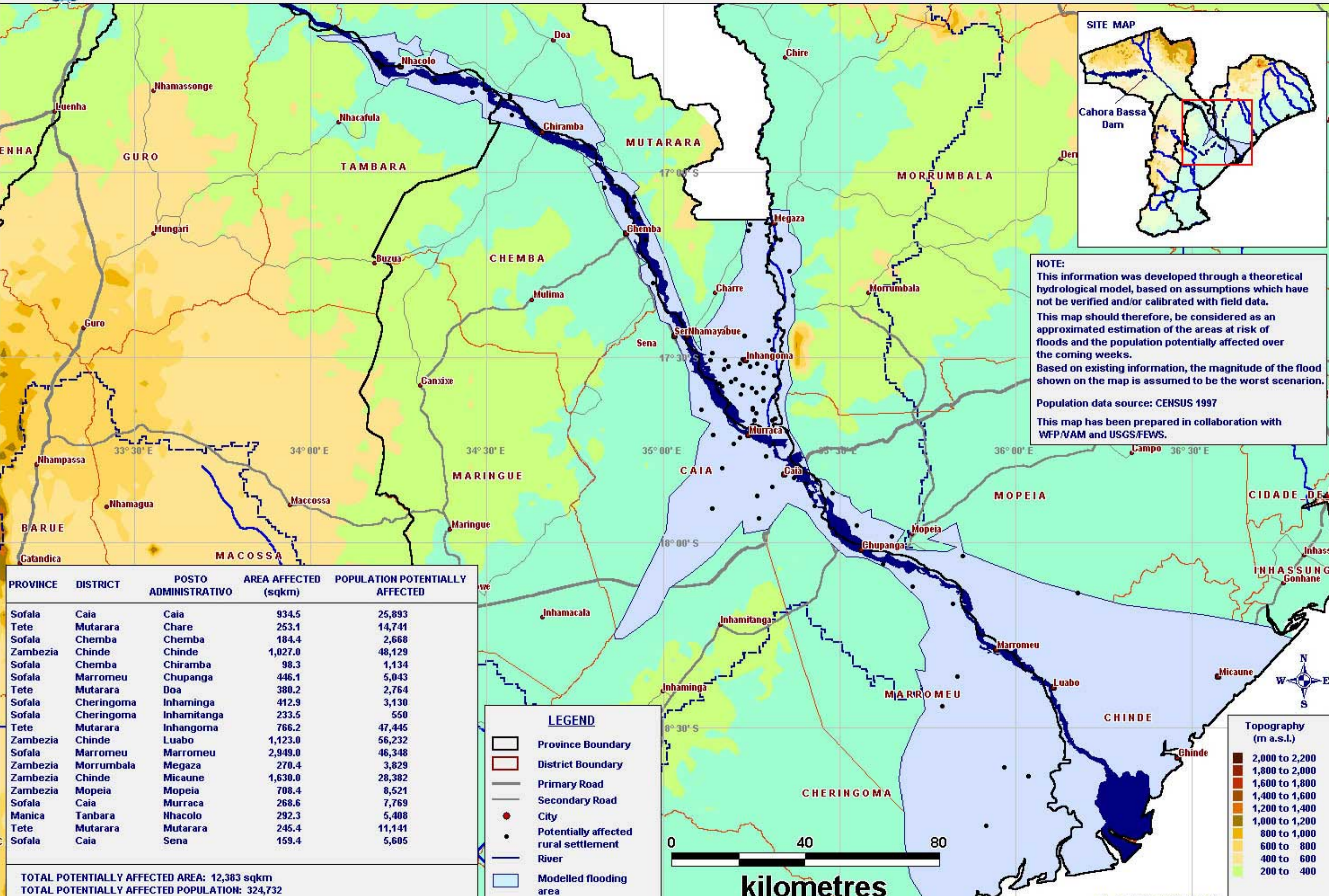


# ZAMBEZE LOWER RIVER BASIN - FLOOD RISK MAP AND AFFECTED POPULATION



**NOTE:**  
 This information was developed through a theoretical hydrological model, based on assumptions which have not been verified and/or calibrated with field data. This map should therefore, be considered as an approximated estimation of the areas at risk of floods and the population potentially affected over the coming weeks. Based on existing information, the magnitude of the flood shown on the map is assumed to be the worst scenerion.  
 Population data source: CENSUS 1997  
 This map has been prepared in collaboration with WFP/VAM and USGS/FEWS.



PROVINCE	DISTRICT	POSTO ADMINISTRATIVO	AREA AFFECTED (sqkm)	POPULATION POTENTIALLY AFFECTED
Sofala	Caia	Caia	934.5	25,893
Tete	Mutarara	Chare	253.1	14,741
Sofala	Chemba	Chemba	184.4	2,668
Zambezia	Chinde	Chinde	1,027.0	48,129
Sofala	Chemba	Chiramba	98.3	1,134
Sofala	Marromeu	Chupanga	446.1	5,043
Tete	Mutarara	Doa	380.2	2,764
Sofala	Cheringoma	Inhaminga	412.9	3,130
Sofala	Cheringoma	Inhamitanga	233.5	550
Tete	Mutarara	Inhangoma	766.2	47,445
Zambezia	Chinde	Luabo	1,123.0	56,232
Sofala	Marromeu	Marromeu	2,949.0	46,348
Zambezia	Morrumbala	Megaza	270.4	3,829
Zambezia	Chinde	Micaune	1,630.0	28,382
Zambezia	Mopeia	Mopeia	708.4	8,521
Sofala	Caia	Murraca	268.6	7,769
Manica	Tanbara	Nhacolo	292.3	5,408
Tete	Mutarara	Mutarara	245.4	11,141
Sofala	Caia	Sena	159.4	5,605

**LEGEND**

- Province Boundary
- District Boundary
- Primary Road
- Secondary Road
- City
- Potentially affected rural settlement
- River
- Modelled flooding area

**Topography (m a.s.l.)**

- 2,000 to 2,200
- 1,800 to 2,000
- 1,600 to 1,800
- 1,400 to 1,600
- 1,200 to 1,400
- 1,000 to 1,200
- 800 to 1,000
- 600 to 800
- 400 to 600
- 200 to 400

TOTAL POTENTIALLY AFFECTED AREA: 12,383 sqkm  
 TOTAL POTENTIALLY AFFECTED POPULATION: 324,732