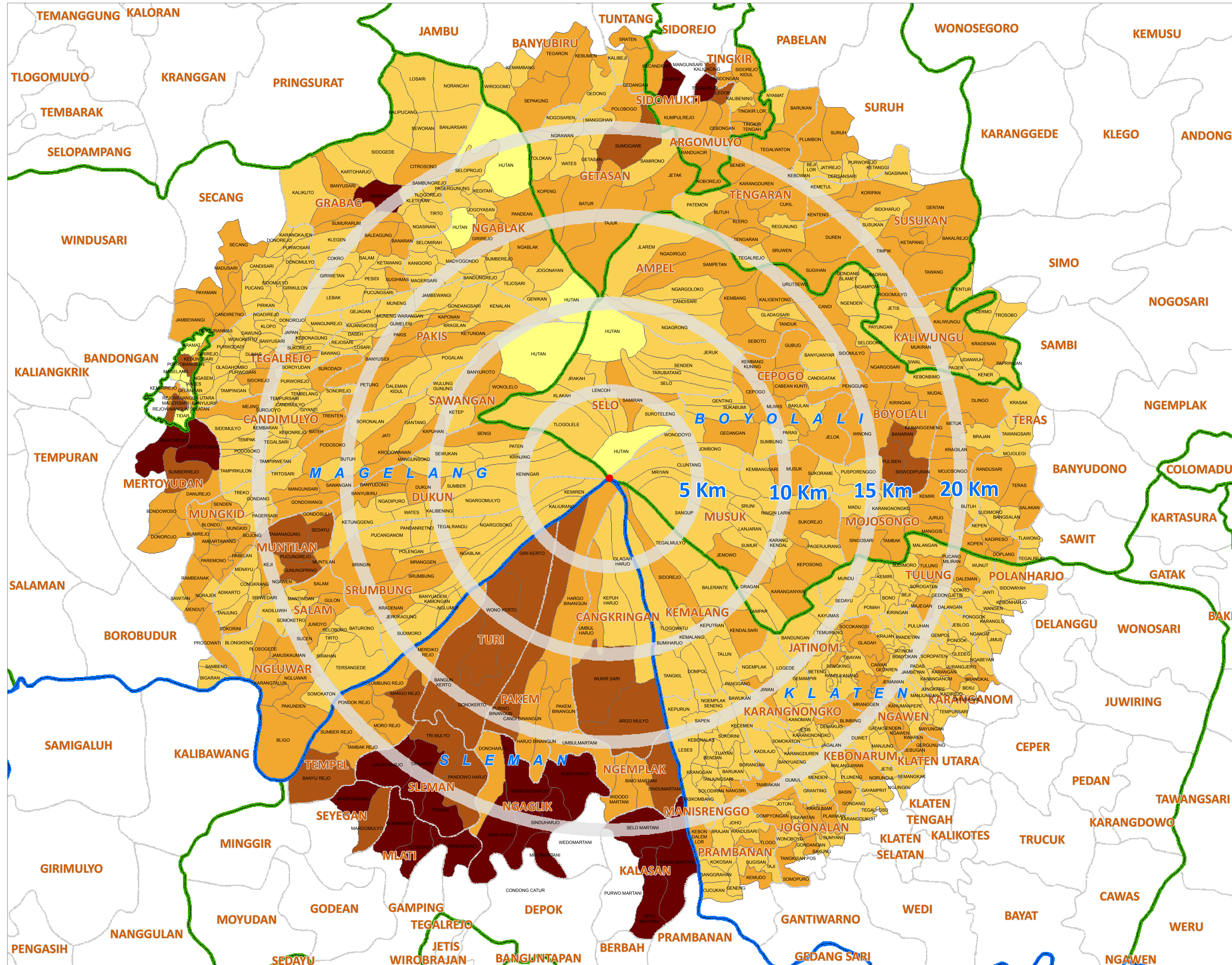


Mt. MERAPI - Population Breakdown by Village within 20 Km From the Crater

08 November 2010



Legend

Population by Village

Between 20 Km and 25 Km from the crater

- Forest (No Data)
- < 3500
- 3500 - 7500
- 7500 - 10000
- > 10000
- Province Boundary
- District Boundary
- Sub District Boundary

Map Doc Name: NS_002_Merapi_Eruption_v3_08112010

GLIDE Number: 08 November 2010

Creation Date: 08 November 2010

Projection/Datum: WGS84

Web Resources: <http://ochaonline.un.org/indonesia>

Nominal Scale at A0 paper size: 1:30.000.000

Map data source(s):

Admin Boundary: BPS, Hazard Zone: Directorate of Volcanology and Geologic Hazard Mitigation population: BPS (Podes 2008)

Disclaimers:

The designations employed and the presentation of material on this map do not imply the expression of any opinion whatsoever on the part of the Secretariat of the United Nations concerning the legal status of any country, territory, city or area or of its authorities, or concerning the delimitation of its frontiers or boundaries.

BNPB has confirmed there have been 141 casualties since the initial eruption of 26 October.

The ongoing volcanic activity has also caused 453 major injuries resulting in hospitalization.

While the main evacuation from within the 20km danger zone is complete, there is still a lot of movement of new IDPs between IDP sites, possibly leading to a duplication of IDP registration. Therefore, BNPB estimates there are now at least 278,000 IDPs located across four districts as a result of the eruption of Mt. Merapi in central Java.

