

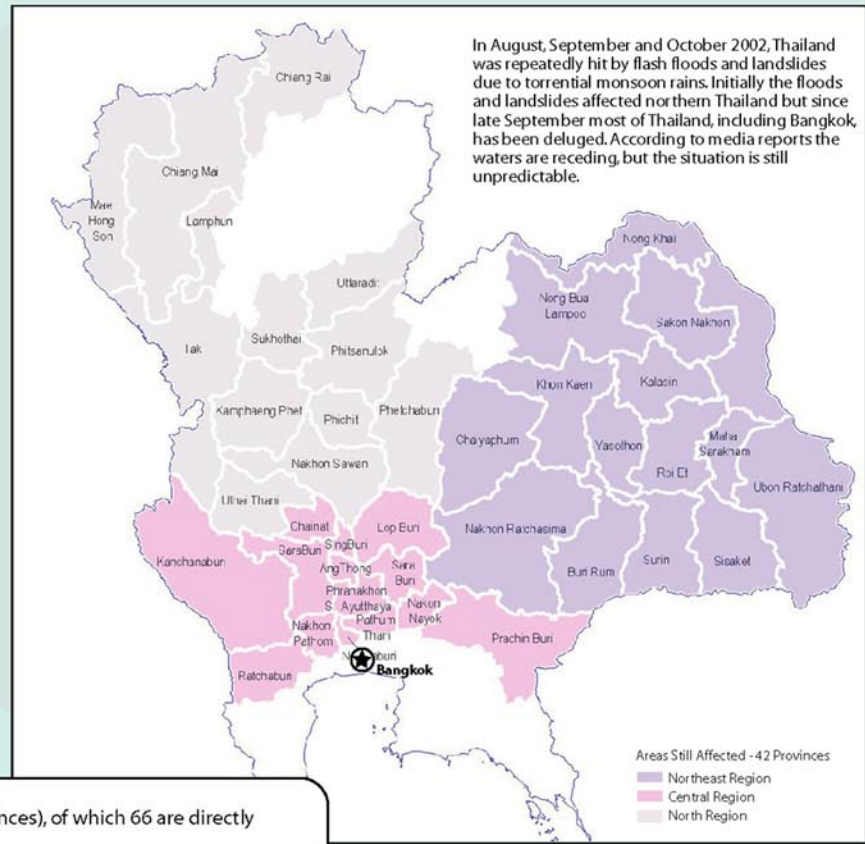
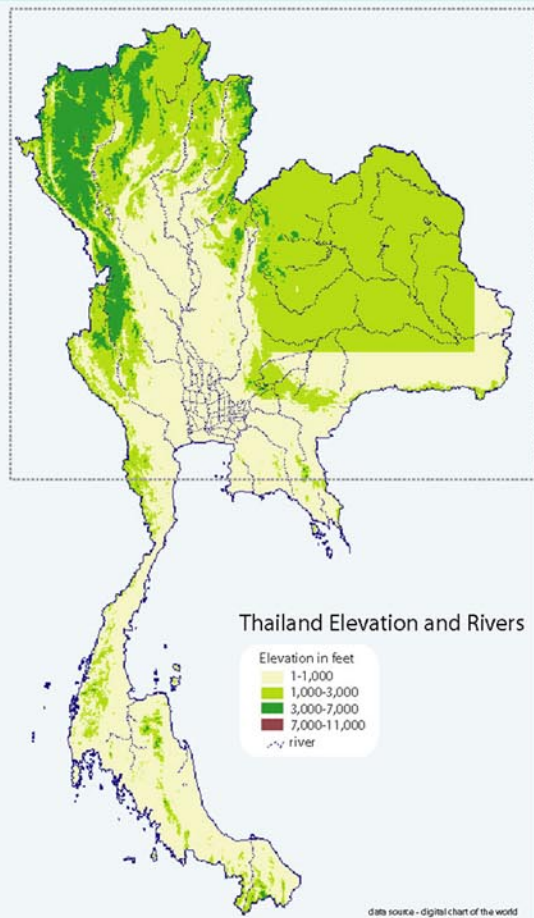


Thailand - Floods

10 October 2002

OCHA Situation Report No. 1

"A total of 11,726 villages, and 2610 sub-districts have been affected."



- Damages / Losses**
- 128 deaths (in 33 provinces), of which 66 are directly attributed to flooding
 - 62 people injured / ill
 - 3,289,358 people from 891,290 households affected
 - A total of 31,772 people from 14,351 households evacuated
 - 8,881 roads, 355 bridges, 994 dams/weirs, 526 drainage canals damaged
 - 7,887,213 Rai of Agricultural land and 60,246 fish/ shrimp ponds damaged (1 rai=0.16 ha)
 - 1,030 houses completely destroyed and 63,303 damaged
 - 1,801,248 livestock animals affected
 - 1,453 government buildings, temples and schools affected

The boundaries and names shown and the designations used on this map do not imply official endorsement or acceptance by the United Nations.