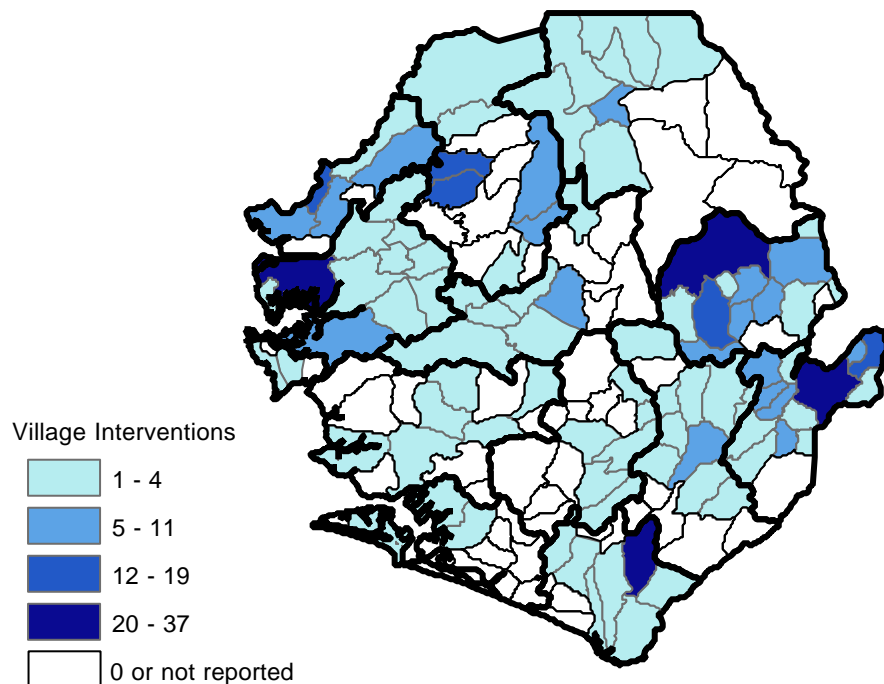


# Water and Sanitation Activities

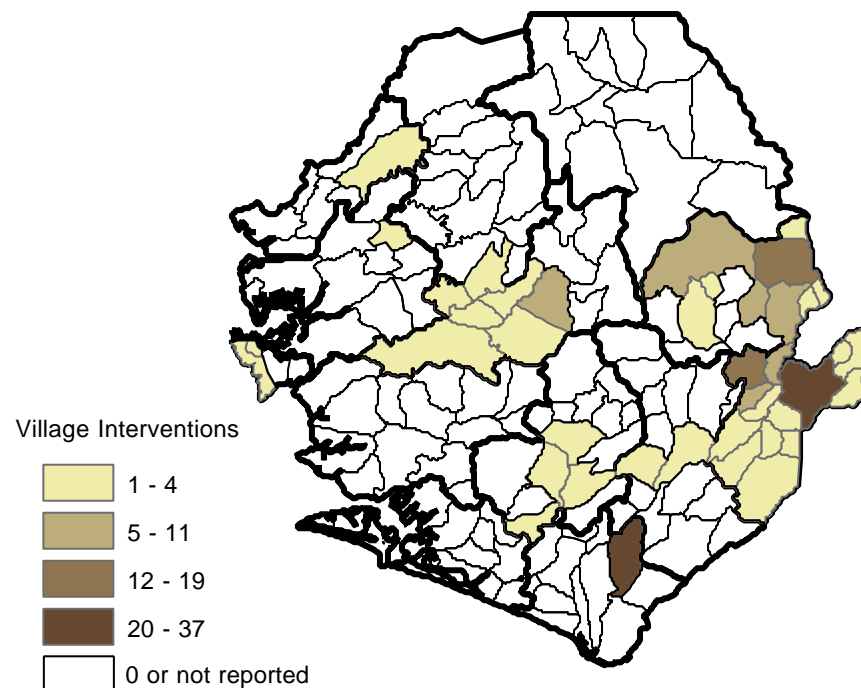
## NRS Monitoring System, September 2003

### Who What Where Component

#### Well Construction Activities



#### Latrine Construction Activities



The data presented here is extracted from the Who What Where (WWW) Database of humanitarian activities. The database consists primarily of activities undertaken during the period of the National Recovery Strategy (NRS), August 2002, but some programmes are from as early as 1999.

One activity in the map has been defined as an intervention within that chiefdom, but does not indicate the number of wells and latrines that were constructed.

The WWW database is one component of the National Recovery Strategy Monitoring System, which aims to monitor progress against the benchmarks of the NRS. The main the component is the data collected by the District Recovery Committees.

The following agencies have reported to the database : NaCSA, UNDP, UNICEF, UNHCR, WFP, FAO, EU/SLRRP, ECHO, OFDA, USAID, ACF, CAUSE, CCF, COOPI, CRS, EFA, GOAL, GTZ, ICRC, IMC, IRC, LWF, MSF-H, NRC, Oxfam, PWJ, TearFund, WR and WVI.

This map was created by the Sierra Leone Information System, an OCHA project established with funding from OFDA, ECHO and UNHCR.

