

# Total September Rainfall Accumulation for West Africa - 2007

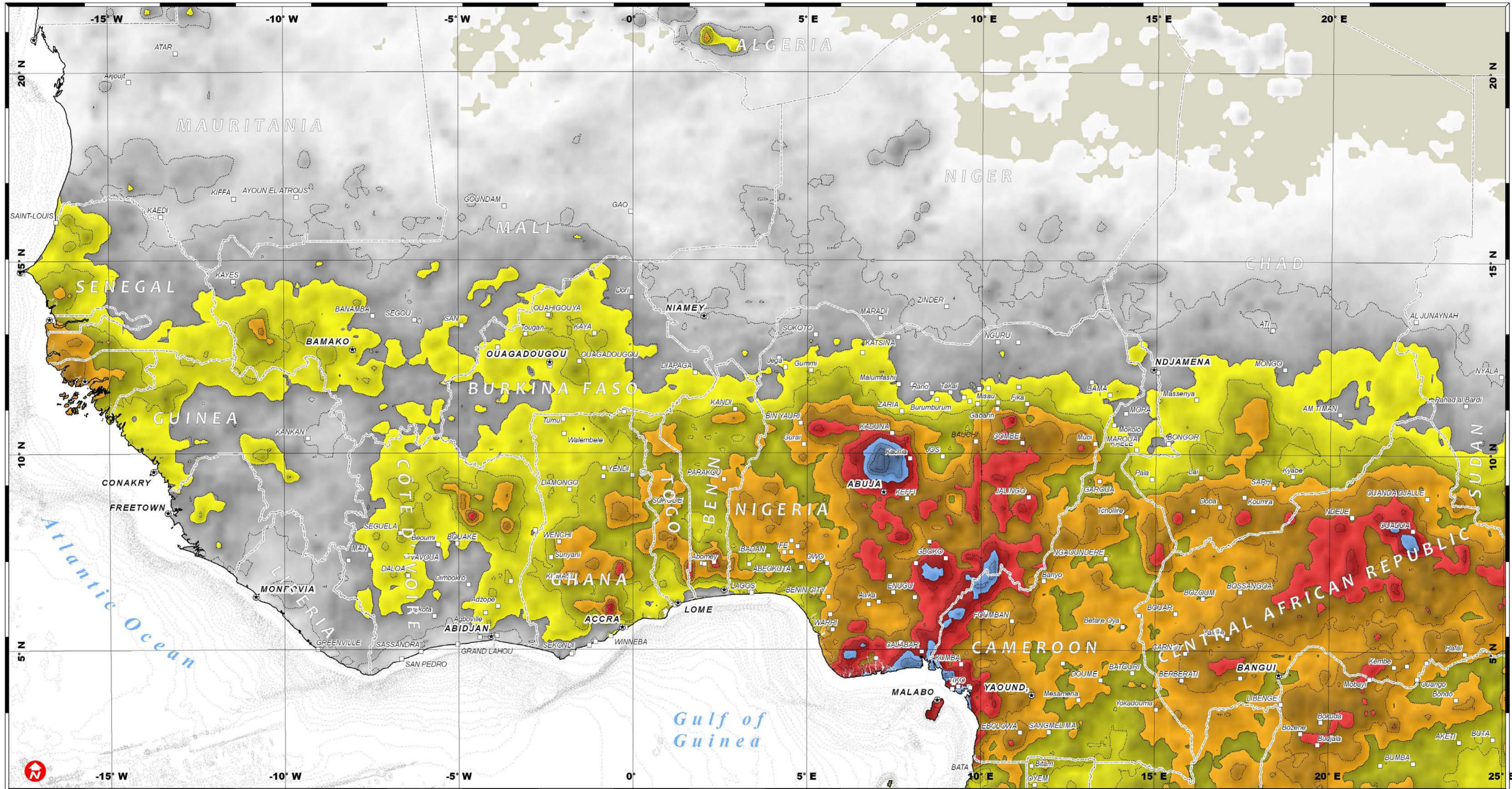
Rainfall from Daily NOAA-CMORPH Estimates (1-30 September 2007)

Flood Event  
Sept. 2007

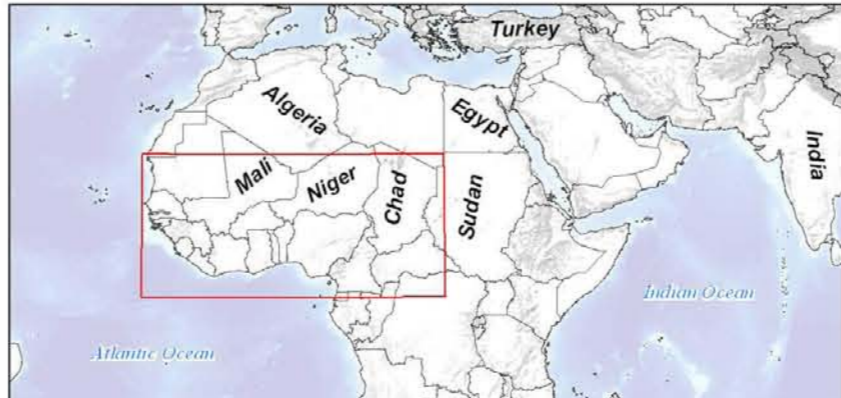
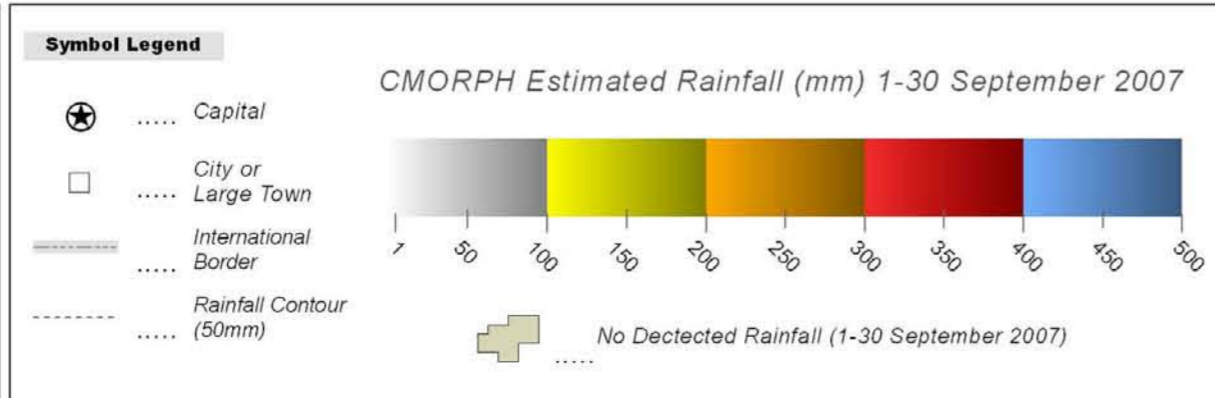
8 October 2007

Version 1.1

Glide No: FL-2007-000153-GHA



**Map Information**  
This rainfall estimate was derived from the daily global CMORPH precipitation dataset at a spatial resolution of approximately 10km for this region, and was calculated using microwave and infrared data from geostationary satellites. It is possible that precipitation levels may have been underestimated for local areas, and is not a substitute for ground station measurements. For more information: <http://www.cpc.ncep.noaa.gov/>. This is a preliminary analysis and has not yet been validated in the field. UNOSAT is collaborating with WFP and ITHACA in support to the humanitarian operation in West Africa.  
The depiction and use of boundaries, geographic names and related data shown here are not warranted to be error-free nor do they imply official endorsement or acceptance by the United Nations. This map was produced by the United Nations Institute for Training and Research (UNITAR) Operational Satellite Applications Programme (UNOSAT). UNOSAT provides satellite imagery and related geographic information to UN humanitarian and development agencies and their implementing partners.



**Map Scale for A2: 1:8,000,000**  
1 Centimeter = 80 Kilometers

0 50 100 200 300 400 500 600 Kilometers

Rainfall Data .....CMORPH (NOAA)  
Spatial Resolution ..... 0.10 Degrees  
Dates ..... 1-30 Sept. 2007  
GIS Data ..... NOAA, NGA, GIST  
Bathymetry Data ..... GEBCO

Elevation Data ..... SRTM (90m) - NASA  
Map Production ..... UNOSAT (8 October 2007)  
Projection ..... Lambert Conformal Conic  
Datum ..... WGS 1984

**Contact Information: [info@unosat.org](mailto:info@unosat.org)**  
**24/7 Hotline: +41 76 487 4998**

**UNOSAT**  
satellite imagery for all  
[www.unosat.org](http://www.unosat.org)