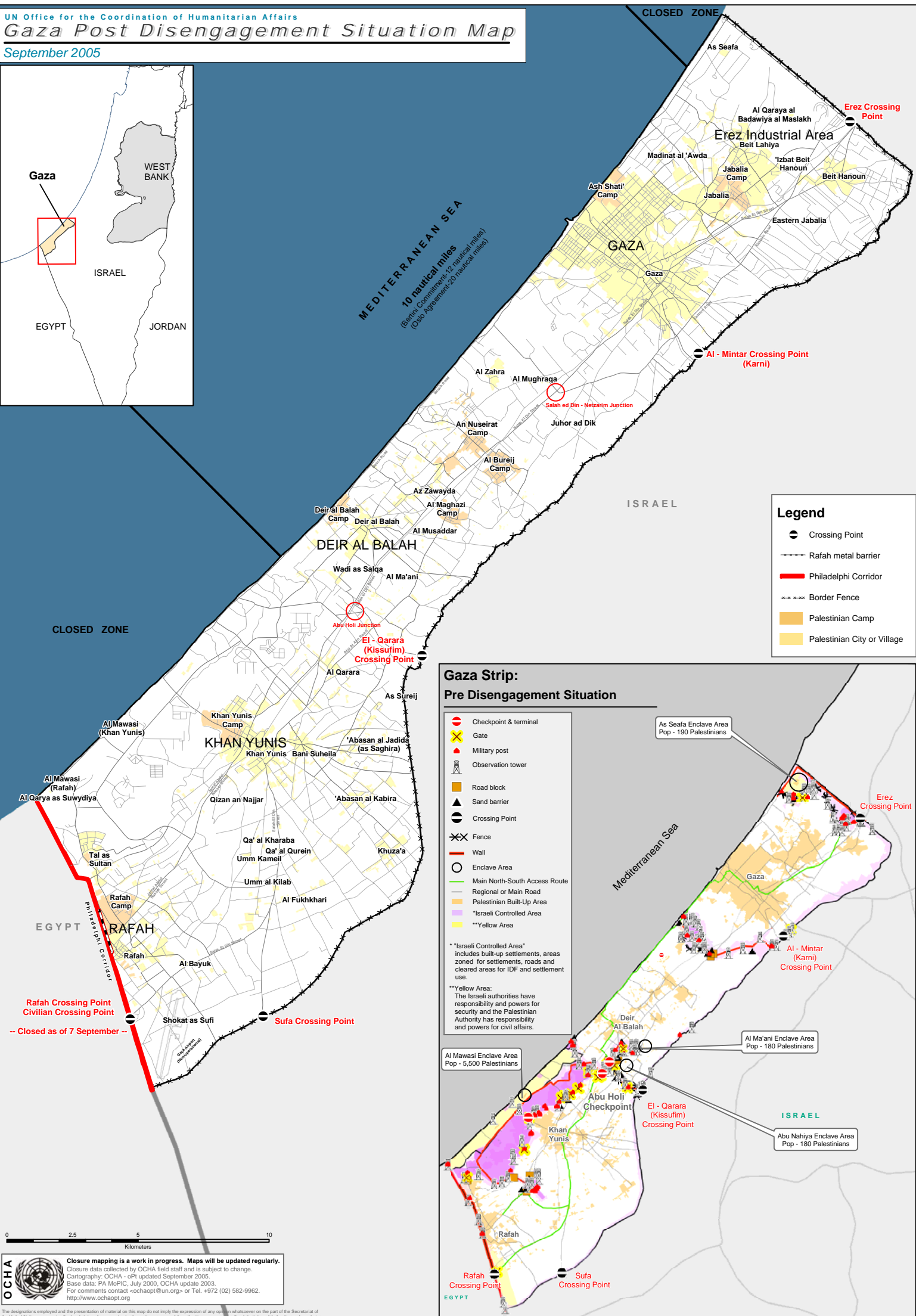


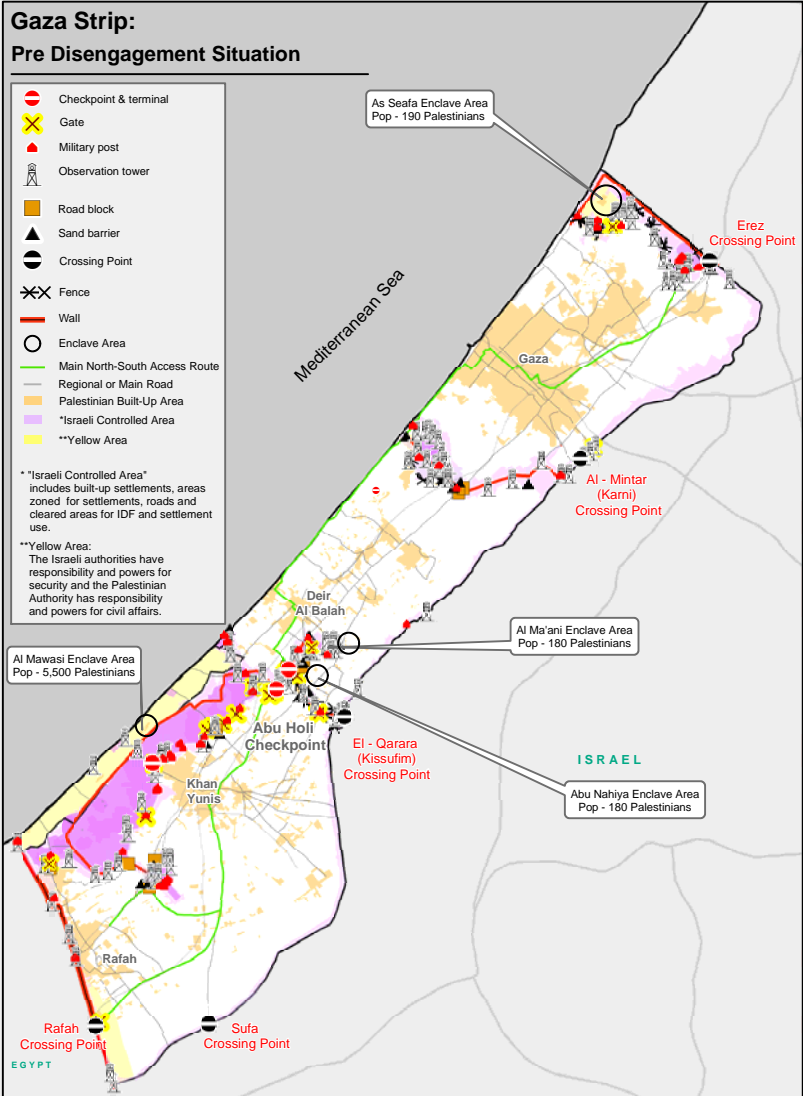
UN Office for the Coordination of Humanitarian Affairs  
**Gaza Post Disengagement Situation Map**

September 2005



### Legend

- Crossing Point
- Rafah metal barrier
- Philadelphia Corridor
- Border Fence
- Palestinian Camp
- Palestinian City or Village



**OCHA**

Closure mapping is a work in progress. Maps will be updated regularly. Closure data collected by OCHA field staff and is subject to change. Cartography: OCHA - oPT updated September 2005. Base data: PA MoP/C, July 2000; OCHA update 2003. For comments contact <a href="mailto:ochaopt@un.org">ochaopt@un.org</a> or Tel. +972 (02) 582-9962. <http://www.ochaopt.org>

The designations employed and the presentation of material on this map do not imply the expression of any opinion whatsoever on the part of the Secretariat of the United Nations concerning the legal status of any country, territory, city or area or of its authorities, or concerning the delimitation of its frontiers or boundaries.