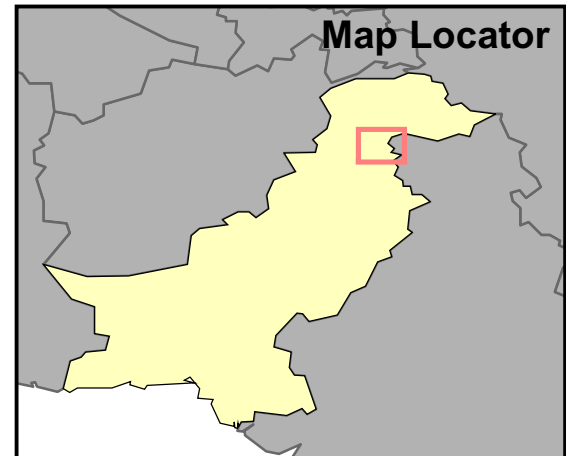
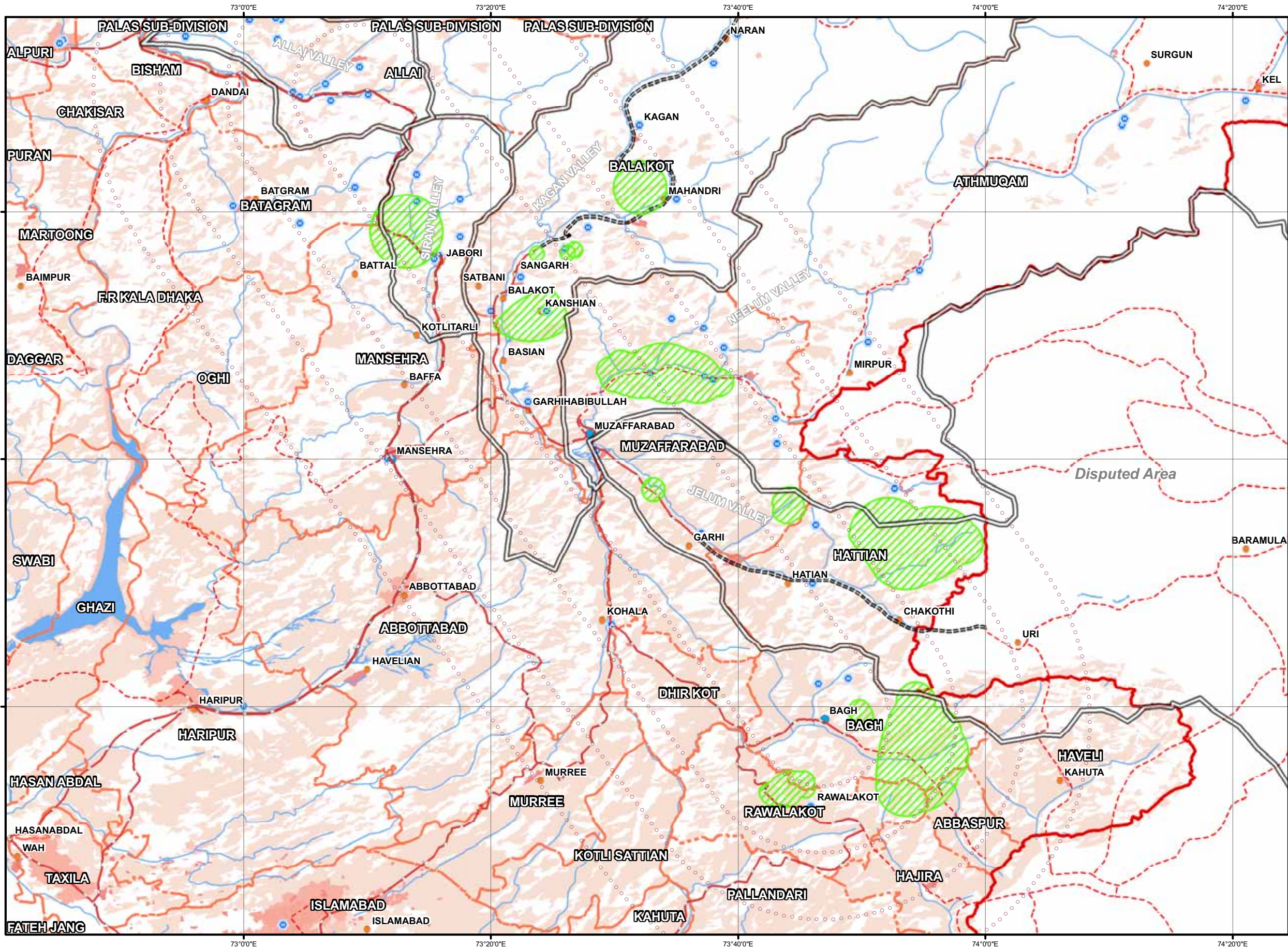


KNOWN AREAS IN NEED OF ASSISTANCE

SITUATION ON 30-10-2005
Source: UNJLC



Legend

- Province
- Tehsil
- Valley Limit
- Water body
- River
- Karakom Highway
- Open
- Impassable
- No report
- UN Hub
- Major towns
- 10Km Earth Quake Buffer
- Aid Needed
- Helipad

Population Density

- Unknown / Nil
- Very Low
- Low
- Medium
- High
- Very High

Road status

STATUS

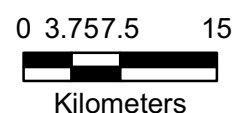
- Karakom Highway
- Open
- Impassable
- No report

Data Source: OCHA, UNJLC, DFID, UNDSS, WFP, USGS
Production Date: 30/10/2005
Map Catalog: PAK-121-PAK

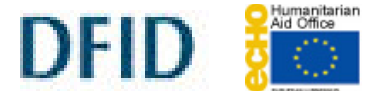
The boundaries and names and the designations used on this map do not imply official endorsement or acceptance by the United Nations.
© 2005 UN Humanitarian Information Center Pakistan



Produced By: Humanitarian Information Center, Pakistan



Produced through the generous support of:



UN Emergency Response Centre, 90 Margalla Road, F8/2, Islamabad Email: HicPakistan.Gis1@un.org

Z:\SouthAsia_Earthquake01_Accident01_Project_Files\HIC05-021\PAK_No_Areas.mxd