



CYCLONE ALERT

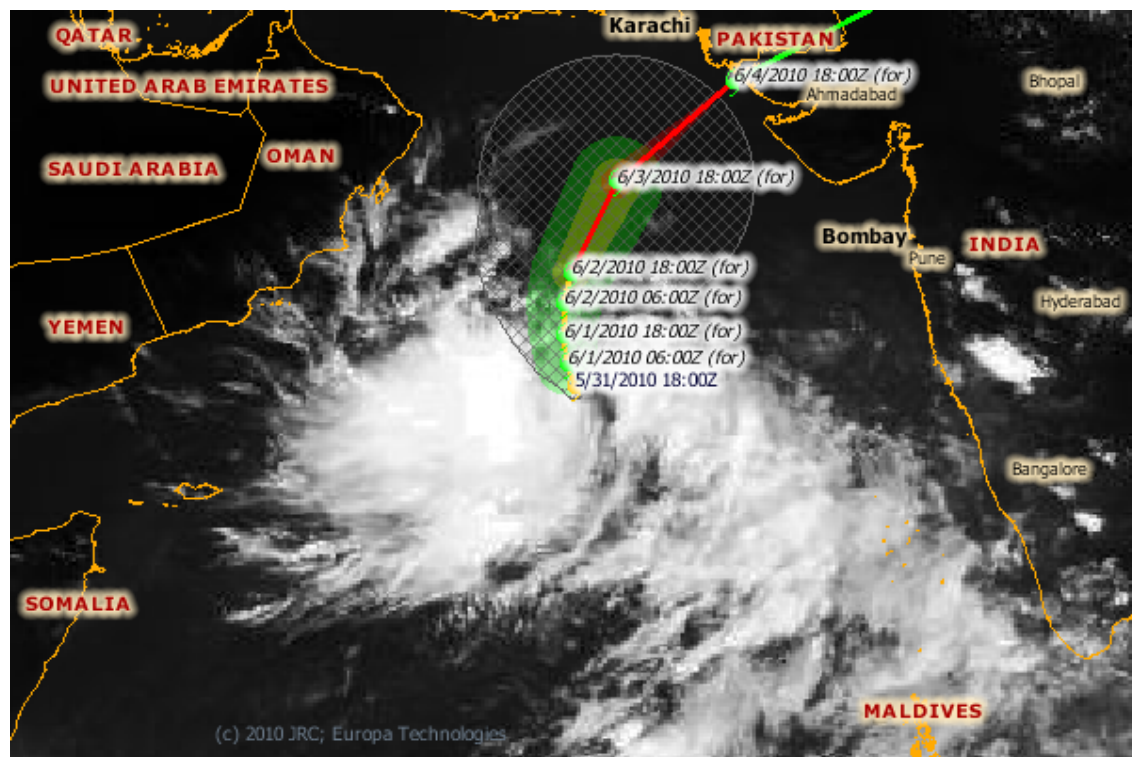
June 1, 2010

The Indian Meteorological Department (IMD) has reported that a deep depression over west central and the adjoining east central Arabian Sea has intensified into a cyclonic storm - 'Phet'.

At 1430 IST on 1st June, 2010, the depression was centred around 1100 km west-southwest of Mumbai and 1030 km southwest of Naliya in Kutch, Gujarat. The IMD predicts that the system is likely to further intensify into a severe cyclonic storm and move towards the coasts of Gujarat and Pakistan.

According to the IMD, "under the influence of this system, fairly widespread rainfall with isolated heavy to very heavy falls would commence over coastal areas of Gujarat from 3rd June 2010 and increase thereafter. Squally winds with speed reaching 55-65 kmph gusting 75 kmph would commence along and off Gujarat coast from 2nd June 2010 and increase gradually."

Fishermen have been advised not to venture into the sea on account of the very rough sea conditions expected off the coast of Gujarat from 2nd June 2010.



Legend: Areas affected by winds of 39mph (green), 58mph (orange) and 74mph (red); shaded area is uncertainty cone of forecasted cyclone path.
Source: www.gdacs.org



Unified Response Strategy

Sphere India

Alert prepared on:

Date: 1st June 2010

Time: 1930hrs, IST

Sources:

Indian Meteorological Department: www.imd.gov.in

Global Disaster Alert and Coordination System: www.gdacs.org

Tropical Storm Risk: www.tropicalstormrisk.com

Contact:

Vikas Gora	Focal Point Inter Agency Coordination & URS	9958699913	vikas@sphereindia.org.in
Viren Falcao	Sphere Coordinator	9911552942	viren@sphereindia.org.in