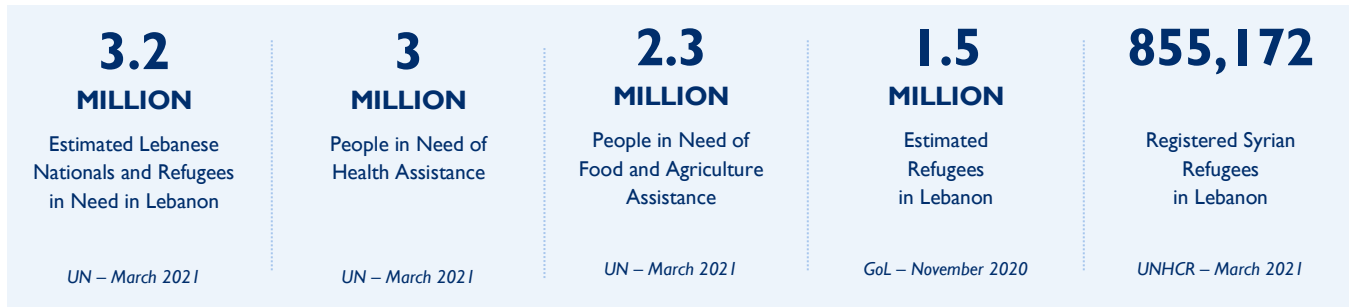


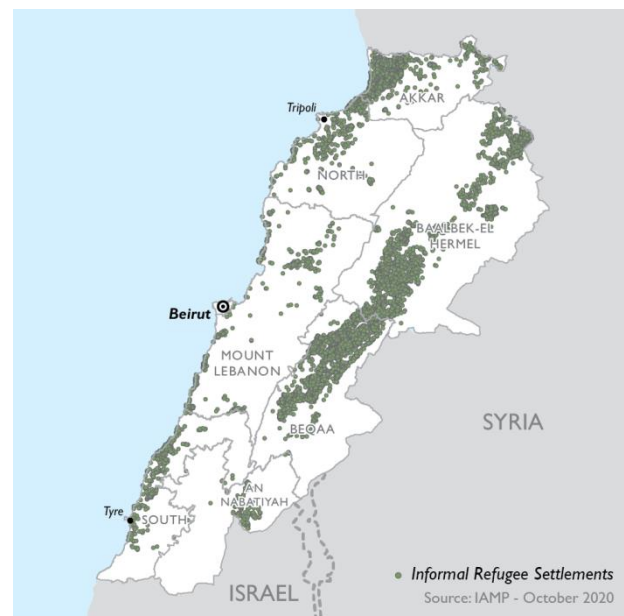
Lebanon – Complex Emergency

JULY 1, 2021

SITUATION AT A GLANCE



- U.S. Secretary of State Antony J. Blinken announces \$100.2 million in additional USG funding to provide assistance to Syrian refugees in Lebanon.
- U.S. Ambassador to Lebanon Dorothy C. Shea visits UNRWA after the USG announces the resumption of assistance to Palestinians, including Palestinian refugees in Lebanon.
- Lebanon’s ongoing economic crisis adversely affects the food security of vulnerable Lebanese nationals and refugees, as well as further limits refugees’ livelihoods and access to health care.



TOTAL U.S. GOVERNMENT HUMANITARIAN FUNDING For the Lebanon Response in FY 2021	USAID/BHA ¹	\$110,351,000
	State/PRM ²	\$192,864,543
	Total	\$303,215,543

For complete funding breakdown with partners, see detailed chart on page 6

¹ USAID’s Bureau for Humanitarian Assistance (USAID/BHA)
² U.S. Department of State’s Bureau of Population, Refugees, and Migration (State/PRM)

KEY DEVELOPMENTS

Economic Deterioration Raises Food Costs, Disrupts Markets

The price of the survival minimum expenditure basket (SMEB)—the minimum level of food; water, sanitation, and hygiene (WASH) supplies; and other essential commodities that a household requires for survival for one month—continues to increase amid deteriorating economic conditions in Lebanon, the UN World Food Program (WFP) reports. The price of the food portion of the SMEB rose to approximately \$150—more than 220,500 Lebanese pounds (LBP) at the official exchange rate—in April, representing a 16 percent increase compared to the March SMEB price of nearly 190,700 LBP, according to WFP. The uptick follows a 22 percent increase from February to March and a 12 percent increase from January to February, which mirrors ongoing currency depreciation. WFP continues to advocate that the Government of Lebanon (GoL) allow for increased cash transfer values for food assistance to enable the UN agency to fully meet beneficiaries' food needs, noting a recent reduction in acceptable food consumption among Syrian refugee households, despite provision of assistance. WFP also provides assistance to vulnerable Lebanese households who have been adversely affected by Lebanon's economic crisis and rising SMEB costs.

WFP also reported large-scale market disruptions across Lebanon during March, with shops and suppliers suspending or temporarily limiting their operations due to rapid currency depreciation, hindering access to and availability of food. In May, with USAID/BHA and other donor funding, WFP provided emergency food assistance to more than 1.2 million people in Lebanon through cash-based transfers and in-kind food distributions. The figure includes nearly 242,000 vulnerable Lebanese nationals, more than 955,000 Syrian refugees, and nearly 21,000 refugees of other nationalities.

Economic Crisis Increases Refugees' Humanitarian Needs

The economic crisis in Lebanon continues to adversely affect refugees, with monitoring conducted by the Office of the UN High Commissioner for Refugees (UNHCR) from January to March indicating that more than 80 percent of surveyed households faced difficulties purchasing food and nearly 80 percent experienced difficulties paying rent due to a lack of money. In addition, more than 60 percent of individuals surveyed reported loss of employment, livelihoods, or both, while approximately 33 percent of survey respondents faced challenges accessing health care services during the period. UNHCR also observed deterioration in the mental health of refugees, as well as increased use of negative coping mechanisms, such as child labor, deprioritizing health care expenses, incurring debt, sexual exploitation, and reducing food consumption. Meanwhile, the GoL continues to prohibit UNHCR from registering new refugees, as has been the case since 2015, hampering access to humanitarian assistance and public services. Although the number of refugees in Lebanon remains approximately 1.5 million people, the number of officially registered Syrian refugees decreased to nearly 855,200 individuals as of late March, a 1 percent decrease from the end of 2020. With State/PRM support, UNHCR continues to provide health, livelihood, and protection assistance to vulnerable Syrian refugees in Lebanon.

USAID/BHA Official Visits Partners, Monitors Humanitarian Programs

A USAID/BHA staff member conducted three site visits to meet with relief partners and monitor ongoing humanitarian programs from May to June. In a mid-May site visit to international non-governmental organization (NGO) partner World Vision program sites in Mount Lebanon Governorate's Sin El Fil city, the U.S. Government (USG) representative monitored handwashing stations funded by USAID/BHA to help mitigate the spread of the coronavirus disease (COVID-19). Overall, World Vision has established 28 handwashing stations, including 16 in Beqaa Governorate and

12 in Lebanon's capital city of Beirut and Mount Lebanon. The USG official and World Vision also met with Sin El Fil Municipality representatives to discuss the health and secondary effects of the COVID-19 outbreak on vulnerable populations in Lebanon, as well as ongoing response efforts. In a subsequent late May site visit, the USG official visited the homes of eight families who received USAID/BHA-funded shelter assistance to repair their homes through partner Lutheran World Relief (LWR) following the August 2020 explosions at the Port of Beirut. In total, LWR has repaired approximately 1,900 homes in Beirut city. These critical repairs have enabled families to return to their homes and rebuild their lives following the port explosions. In early June, the USG representative visited USAID/BHA partner Caritas' distribution site in Beirut's Achrafieh District to observe the distribution of relief items. Caritas provides non-food relief items to households affected by the port explosions, distributing bedding and mattresses to more than 90 households and hygiene items to nearly 1,300 households in May.

USG Announces \$100.2 Million for Refugee Response in Lebanon

On June 28, Secretary Blinken announced approximately \$100.2 million in additional State/PRM funding for Syrian refugees and host community members in Lebanon. The new funding will support UNHCR, the UN Children's Fund (UNICEF), and other implementing partners and includes \$83.3 million for multi-sector response efforts, such as cash-based programming, health care services, and protection support, as well as \$16.9 million for COVID-19 response efforts. The additional funding brings the total USG support to address the refugee crisis in Lebanon, including Syrian and non-Syrian refugees; the effects of the August 2020 explosions in Beirut; and the impacts of the COVID-19 pandemic to more than \$303.2 million in FY 2021.

Ambassador Shea Visits UNRWA, Meets with RC/HC Rochdi in Lebanon

Following the April 7 announcement of the resumption of USG economic, development, and humanitarian assistance for the Palestinian people, Ambassador Shea visited the UN Relief and Works Agency for Palestine Refugees in the Near East (UNRWA) Lebanon Field Office on April 20. During the visit, Ambassador Shea met with UNRWA representatives, as well as UN Resident and Humanitarian Coordinator (RC/HC) for Lebanon Najat Rochdi, Chairperson of the Lebanese-Palestinian Dialogue Committee Hassan Mneimneh, and Palestinian Ambassador to Lebanon Ashraf Dabbour. UNRWA representatives noted the USG contribution of \$150 million to UNRWA announced in April—including \$9.6 million specifically for Palestinian refugees in Lebanon—will support its operations in the country protecting the health and safety of the more than 180,000 Palestinian refugees from Lebanon and more than 27,000 Palestinian refugees from Syria, particularly amid the COVID-19 outbreak and economic crisis in Lebanon.

KEY FIGURES



People reached with USG-supported food assistance in FY 2020

U.S. GOVERNMENT RESPONSE

FOOD SECURITY

USAID/BHA has provided food assistance to respond to the refugee crisis in Lebanon since FY 2012. In FY 2020, USAID/BHA supported WFP to reach 295,000 Syrian refugees and 9,600 refugees of other nationalities through vouchers and cash transfers for food, enabling individuals to purchase nutritious foods available in local markets and support local vendors. Moreover, USAID/BHA expanded food programming in Lebanon to reach populations affected by the August 2020 explosions and individuals particularly affected by the COVID-19 pandemic. WFP is providing

emergency food assistance to 543,000 people in Lebanon through its COVID-19 program and distributing in-kind food assistance and food vouchers to nearly 78,000 people affected by the August 2020 explosions. From FY 2012 to FY 2021, USAID/BHA provided more than \$748 million to reach refugees in Lebanon with emergency food assistance, in addition to \$23.5 million in FY 2020 to respond to food needs among refugees and Lebanese nationals resulting from COVID-19 and the August 2020 explosions.



72,000

People reached per month with USG-supported COVID-19 messaging

HEALTH

State/PRM supports UNHCR to provide primary and secondary health care services—including child, maternal, mental health, and sexual and reproductive care services, as well as medications and vaccinations—to Syrian refugees, refugees of other nationalities, and vulnerable Lebanese individuals. UNHCR also subsidizes refugee access to primary care and emergency services, including COVID-19 testing and treatment, supporting at least 14,000 hospital care referrals since January. Moreover, the UN agency is helping refugees enroll in Lebanon’s national COVID-19 vaccination plan through nearly 400 health workers and outreach volunteers, supporting 500 refugees to register to receive the vaccine from January to March. Additionally, UNHCR also disseminates COVID-19 awareness and prevention messaging through community health volunteers who reach nearly 72,000 individuals per month; virtual awareness sessions; and social media. UNHCR also supports 10 COVID-19 isolation units, with a combined capacity of approximately 570 patients. Additionally, State/PRM partner Restart and other NGO partners provide psychosocial support (PSS) services for refugees and host communities. Further, State/PRM partner UNICEF distributes micronutrients to children younger than five years of age, as well as emergency food rations, micronutrient sachets, therapeutic milk, and Vitamin A to primary health clinics and other partners in Lebanon.

To mitigate the spread and impact of COVID-19 and reduce health needs among vulnerable Lebanese nationals, USAID/BHA supports the American University of Beirut (AUB) to implement early detection and transmission mitigation strategies in health care centers, including through the training of health care staff and distribution of personal protective equipment (PPE). From February to April, AUB provided 10 partner hospitals in Beqaa and North governorates with nearly 16,000 PPE items each to support medical staff. Between June 2020 and March 2021, AUB’s partner hospitals treated more than 5,400 people with COVID-19.



150,000

People reached by USG-supported WASH assistance per month

WASH

The USG supports WASH programming throughout Lebanon to bolster water and sanitation conditions and prevent the spread of COVID-19. USAID/BHA partner World Vision is rehabilitating handwashing stations and sanitation facilities in public spaces, as well as providing WASH kits—including detergent, face masks, hand sanitizer, and soap—to households

who are most vulnerable to COVID-19, in Beirut and Mount Lebanon and Beqaa. With State/PRM support, UNICEF continues to facilitate access to safe drinking water and sanitation services for more than 150,000 Syrian refugees residing in informal settlements across Lebanon, helping mitigate public health hazards and social tensions related to limited water resources.



48,750

Households reached with USG-supported protection services in 2021

PROTECTION

State/PRM supports five NGOs to provide child protection, gender-based violence (GBV) prevention, and mental health and PSS services to vulnerable populations across Lebanon. State/PRM also supports UNICEF to provide child protection services, reaching 2,300 high-risk cases from January to March. UNICEF also distributes protection-related cash assistance to vulnerable households, benefitting approximately 8,000 children from January to March. Additionally, State/PRM partner UNHCR has distributed cash assistance to more than 52,000 vulnerable Syrian refugee households to date in 2021.



1,250

Explosion-affected houses repaired by USG-supported shelter and settlement activities

SHELTER

In response to the August 2020 explosions, USAID/BHA supported Caritas to provide basic household items, such as mattresses and stoves, for people whose residences were destroyed by the explosions. In addition, with USAID/BHA funding, LWR repaired approximately 1,900 homes damaged by the explosions in Beirut. Moreover, with State/PRM support, UNHCR assists displaced persons residing in informal settlements and residential buildings with maintenance, repair, and weatherproofing support.



150,000

Children targeted to receive USG-supported education materials in Lebanon

EDUCATION

State/PRM partner UNICEF provides technological and teaching resources to support education activities conducted online due to the COVID-19 pandemic, aiming to reach at least 150,000 students. In addition, with State/PRM support, UNHCR continues to administer a certified basic literacy and numeracy test for children ages 10 to 14 years who are out of school, which supports their entry to the formal public education system. Moreover, State/PRM partner the International Rescue Committee recently assisted the GoL Ministry of Education and Higher Education to create a digitized version of the Lebanese curriculum in Arabic, English, and French, and provides education support to refugees in Beqaa and North. Additionally, with State/PRM support, Relief International's Cash for Education program reaches more than 760 households in Beqaa per month, providing monthly stipends to Syrian refugee households as an incentive to keep children in school.

CONTEXT IN BRIEF

- Lebanon hosts the second largest number of refugees per capita of any country, with the influx of approximately 1.5 million refugees straining local resources and generating significant humanitarian needs. Additionally, Lebanon has experienced several large socioeconomic shocks due to overlapping crises since 2019, including ongoing political instability, the steep deterioration of the economy, and the emergence of COVID-19. Worsening economic and financial conditions have resulted in ongoing civil unrest across Lebanon since 2019. Meanwhile, the COVID-19 pandemic and consequent movement restrictions have further affected the already struggling economy.
- On August 4, 2020, concurrent explosions occurred at a warehouse near the Port of Beirut, resulting in at least 180 deaths and injuring an estimated 6,500 people, according to the GoL. Relief actors report that the explosions damaged approximately 48,000 buildings, affecting 171,600 people, and displaced many vulnerable Lebanese, Palestinian, and Syrian households, whose coping mechanisms had already been strained by the ongoing socioeconomic crisis in Lebanon. In response, USAID deployed a Disaster Assistance Response Team (DART) to Beirut and activated a Washington, D.C.-based Response Management Team (RMT) to coordinate response efforts on August 7, 2020. The DART and RMT were demobilized on August 21, 2020, as response efforts shifted to reconstruction.
- On February 17, 2021, U.S. Ambassador to Lebanon Dorothy C. Shea renewed the disaster declaration for COVID-19 in Lebanon for FY 2021 due to the ongoing humanitarian effects of the pandemic on vulnerable Lebanese nationals.

USG HUMANITARIAN FUNDING FOR THE LEBANON RESPONSE IN FY 2021¹

IMPLEMENTING PARTNER	ACTIVITY	LOCATION	AMOUNT
USAID/BHA			
AUB	Health	Countrywide	\$1,250,000
International Medical Corps (IMC)	Health	Baalbek-El Hermel, Beqaa, Mount Lebanon, An Nabatiyah, North, South	\$2,100,000
Mercy Corps	Humanitarian Coordination, Information Management, and Assessments	Countrywide	\$451,000
WFP	Food Assistance	Countrywide	\$105,500,000
World Vision	WASH	Beqaa, Mount Lebanon	\$1,000,000
	Program Support		\$50,000
TOTAL USAID/BHA FUNDING			\$110,351,000
STATE/PRM			
Implementing Partners (IPs)	Cash-Based Programming, Education, GBV Prevention, Health, Livelihoods, Protection, Relief Commodities, Shelter and Settlements, WASH	Countrywide	\$18,998,143
UNHCR	Cash-Based Programming, Education, Health, Mental Health, Livelihoods, Protection, Relief Commodities, Shelter and Settlements, WASH	Countrywide	\$121,866,400
UNICEF	Cash-Based Programming, Child Protection, Education, GBV Prevention, Health, Nutrition, WASH, Youth Programs	Countrywide	\$52,000,000
TOTAL STATE/PRM FUNDING			\$192,864,543

¹ Year of funding indicates the date of commitment or obligation, not appropriation, of funds. Funding figures reflect publicly announced funding as of July 1, 2021.

² Funding includes USG assistance to respond to the August 2020 explosions and the refugee crisis in Lebanon. State/PRM and USAID/BHA funding benefitting refugees in Lebanon is also reported in the USG Syria Complex Emergency Fact Sheet and the USG Iraq Complex Emergency Fact Sheet.

PUBLIC DONATION INFORMATION

- The most effective way people can assist relief efforts is by making cash contributions to humanitarian organizations that are conducting relief operations. A list of humanitarian organizations that are accepting cash donations for disaster responses around the world can be found at [interaction.org](https://www.interaction.org).
- USAID encourages cash donations because they allow aid professionals to procure the exact items needed (often in the affected region); reduce the burden on scarce resources (such as transportation routes, staff time, and warehouse space); can be transferred very quickly and without transportation costs; support the economy of the disaster-stricken region; and ensure culturally, dietarily, and environmentally appropriate assistance.
- More information can be found at:
 - USAID Center for International Disaster Information: [cidi.org](https://www.cidi.org)
 - Information on relief activities of the humanitarian community can be found at [reliefweb.int](https://www.reliefweb.int).

USAID/BHA bulletins appear on the USAID website at [usaid.gov/humanitarian-assistance/where-we-work](https://www.usaid.gov/humanitarian-assistance/where-we-work)