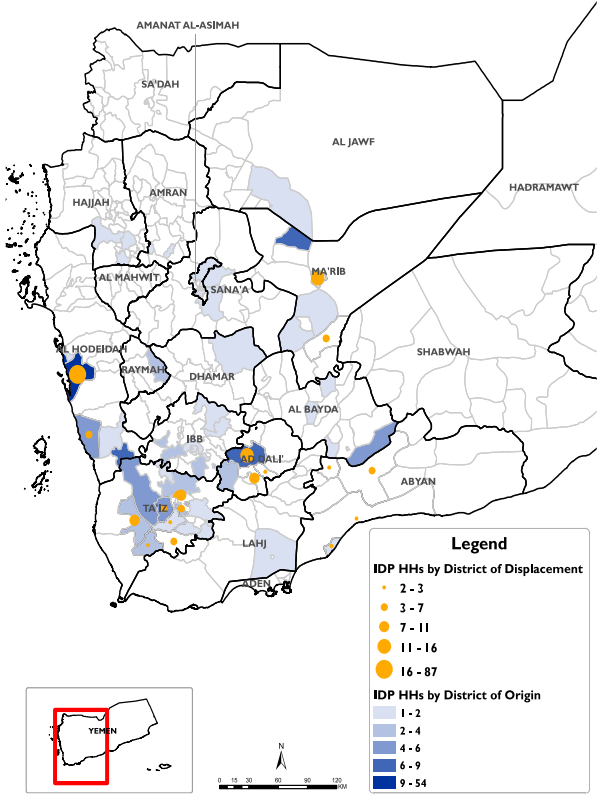


RAPID DISPLACEMENT TRACKING (RDT)

Reporting Period : 20 - 26 Dec 2020

Published on: 27 December 2020

Displaced Households by District of Displacement and Origin	Number of Displaced Households (IDP HHs) per Governorate			
	Governorate of Displacement	IDP HH Displaced during the week	IDP HH who left displaced location within the week	Total IDP HH
		20 to 26 Dec	20 to 26 Dec	01 Jan to 26 Dec
	Hajjah	N/A	N/A	N/A
	Al Dhale'e	28	0	2,889
	Al Hudaydah	93	0	4,002
	Taizz	47	0	2,839
	Amanat Al Asimah	N/A	N/A	N/A
	Ibb	N/A	N/A	N/A
	Marib	22	0	12,828
	Amran	N/A	N/A	N/A
	Sana'a	N/A	N/A	N/A
	Shabwah	0	0	699
	Lahj	0	0	898
	Aden	0	0	166
	Sa'ada	N/A	N/A	N/A
	Abyan	11	0	841
	Dhamar	N/A	N/A	N/A
	Hadramaut	0	0	1,155
	Al Bayda	0	0	138
	Al Jawf	0	0	1,591
	Raymah	N/A	N/A	N/A
	Al Mahwit	N/A	N/A	N/A
	Socotra	0	0	26
	Al Maharah	4	0	587
	Total	205	0	28,659



*Based on data collected during 20 - 26 Dec, 2020

DISPLACEMENT TRACKING

DTM's Rapid Displacement Tracking (RDT) tool collects and reports on numbers of households forced to flee on a daily basis, allowing for regular reporting of new displacements in terms of numbers, geography and needs. In the first eleven months of 2020, conflict (82%) and natural disasters (13%) have resulted most of displacements, particularly in Marib, Al Hudaydah, Al Dhale'e, Tiaz, Al Jawf, and Hadramaut governorates. Economic conditions, Health, COVID-19 and other factors caused rest of 5% displacements.

WEEKLY UPDATE

Between 20 and 26 December, newly displaced households were recorded in Al Hudaydah (93 HH), Taizz (47 HH), and Al Dhale'e (28 HH). Most of these displacements were the result of increased fighting in Al Hudaydah (105 HH), Taizz (37 HH) and Al Dhale'e (13 HH).

IDP HH WHO LEFT DISPLACED LOCATIONS

Since the beginning of 2020, DTM also identified other **1,321** previously displaced households who left the displaced location and moved to either their place of origin or some other displaced location.

Displaced People

28,659 Households
171,954 Individuals

*Reported during Jan 01 - Dec 26, 2020

UPDATE: Additional **18** HHs were displaced between Dec 13 - Dec 19, 2020, and have been added in the total households.

Returned People

1,798 Households
10,788 Individuals

*Reported during Jan 01 - Dec 26, 2020

