

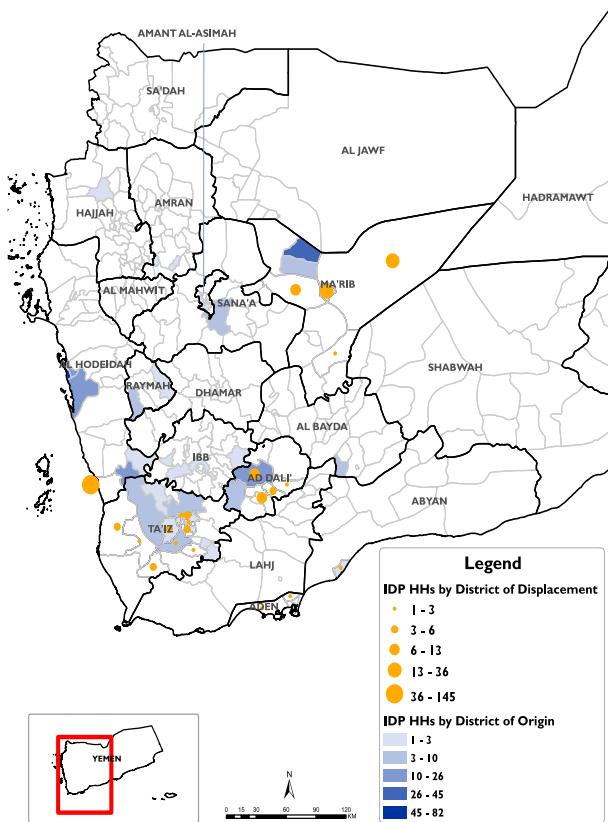
Reporting Period : 22 - 28 Nov 2020

Published on: 29 November 2020

Displaced Households by District of Displacement and Origin

Number of Displaced Households (IDP HHs) per Governorate

Governorate of Displacement	IDP HH Displaced during the week	IDP HH who left displaced location within the week	Total IDP HH
	22 to 28 Nov	22 to 28 Nov	01 Jan to 28 Nov
Hajjah	N/A	N/A	N/A
Al Dhale'e	31	0	2,774
Al Hudaydah	145	0	3,748
Taizz	39	1	2,561
Amanat Al Asimah	N/A	N/A	N/A
Ibb	N/A	N/A	N/A
Marib	74	0	12,637
Amran	N/A	N/A	N/A
Sana'a	N/A	N/A	N/A
Shabwah	0	0	687
Lahj	0	0	877
Aden	2	0	165
Sa'ada	N/A	N/A	N/A
Abyan	2	0	806
Dhamar	N/A	N/A	N/A
Hadramaut	0	0	1,131
Al Bayda	0	0	138
Al Jawf	0	0	1,591
Raymah	N/A	N/A	N/A
Al Mahwit	N/A	N/A	N/A
Socotra	26	0	26
Al Maharah	0	0	575
<b>Total</b>	<b>319</b>	<b>1</b>	<b>27,716</b>



\*Based on data collected during 22 - 28 Nov, 2020

DISPLACEMENT TRACKING

DTM's Rapid Displacement Tracking (RDT) tool collects and reports on numbers of households forced to flee on a daily basis, allowing for regular reporting of new displacements in terms of numbers, geography and needs. In the first eight months of 2020, conflict and natural disasters have resulted in new patterns of displacement, particularly in Marib, Al Hudaydah, Al Dhale'e, Taizz and Al Jawf governorates.

WEEKLY UPDATE

Between 22 and 28 November, newly displaced households were recorded in Al Hudaydah (145 HH), Marib (74 HH), and Taizz (39 HH). Most of these displacements were the result of increased fighting in Al Hudaydah (148 HH), Marib (55 HH) and Taizz (29 HH), and because of floods and heavy rains in Socotra (23 HH).

IDP HH WHO LEFT DISPLACED LOCATIONS

Since the beginning of 2020, DTM also identified other **1,319** previously displaced households who left the displaced location and moved to either their place of origin or some other displaced location.

**Displaced People**  
**27,716** Households  
**166,296** Individuals

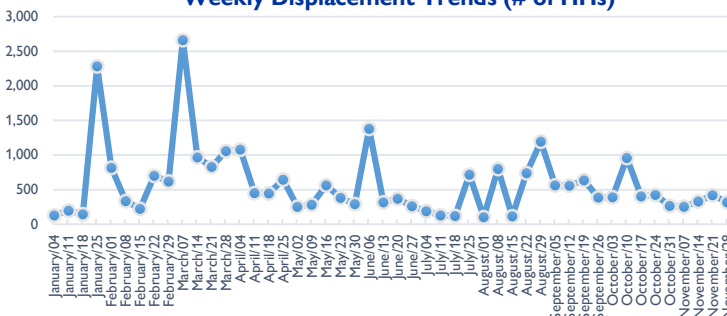
\*Reported during Jan 01 - Nov 28, 2020

**UPDATE:** Additional **33** HHs were displaced between Nov 15 - Nov 21, 2020, and have been added in the total households.

**Returned People**  
**1,728** Households  
**10,368** Individuals

\*Reported during Jan 01 - Nov 28, 2020

Weekly Displacement Trends (# of HHs)



IDPs Shelter Types

- In Settlements (Grouped of Families) Urban and Rural
- In Isolated/dispersed settlements (detached from a location)
- In Rented Accommodation
- With Host Families who are Relatives (no rental fee)
- In Religious Buildings

