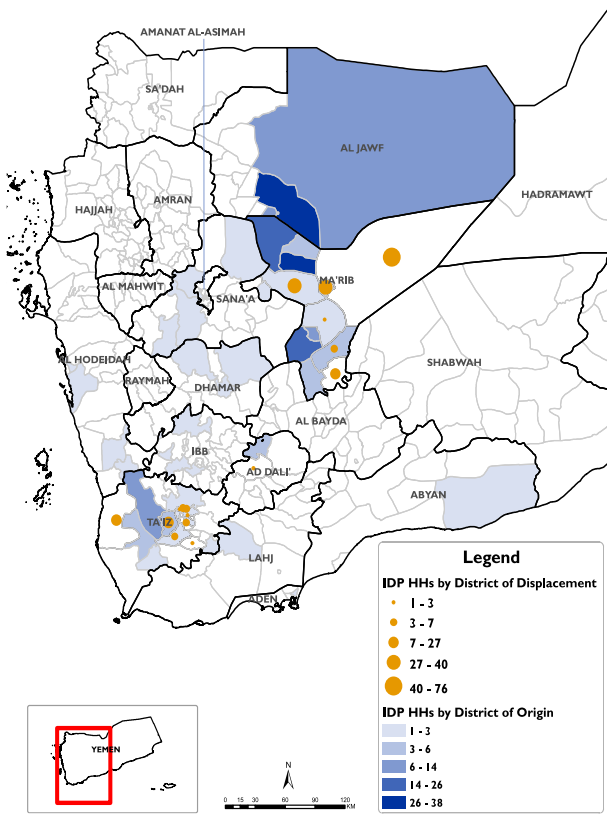


Reporting Period : 25 - 31 Oct 2020

Published on: 01 November 2020

Displaced Households by District of Displacement and Origin	Number of Displaced Households (IDP HHs) per Governorate			
	Governorate of Displacement	IDP HH Displaced during the week	IDP HH who left displaced location within the week	Total IDP HH
		25 to 31 Oct	0	01 Jan to 31 Oct
	Hajjah	N/A	N/A	N/A
	Al Dhale'e	1	0	2,598
	Al Hudaydah	0	0	3,507
	Taizz	65	6	2,316
	Amanat Al Asimah	N/A	N/A	N/A
	Ibb	N/A	N/A	N/A
	Marib	186	0	12,064
	Amran	N/A	N/A	N/A
	Sana'a	N/A	N/A	N/A
	Shabwah	0	0	687
	Lahj	0	0	858
	Aden	0	0	160
	Sa'ada	N/A	N/A	N/A
	Abyan	0	5	790
	Dhamar	N/A	N/A	N/A
	Hadramaut	0	0	1,122
	Al Bayda	0	0	138
	Al Jawf	0	0	1,561
	Raymah	N/A	N/A	N/A
	Al Mahwit	N/A	N/A	N/A
	Socotra	0	0	0
	Al Maharah	0	0	575
	Total	252	11	26,376



*Based on data collected during 25 - 31 Oct, 2020

DISPLACEMENT TRACKING

DTM's Rapid Displacement Tracking (RDT) tool collects and reports on numbers of households forced to flee on a daily basis, allowing for regular reporting of new displacements in terms of numbers, geography and needs. In the first eight months of 2020, conflict and natural disasters have resulted in new patterns of displacement, particularly in Marib, Al Hudaydah, Al Dhale'e, Taizz and Al Jawf governorates.

WEEKLY UPDATE

Between 25 and 31 October, newly displaced households were recorded in Marib (186 HH), Taizz (65 HH), and Al Dhale'e (1 HH). Most of these displacements were the result of increased fighting in Marib (112 HH), Al Jawf (55 HH) and Taizz (28 HH).

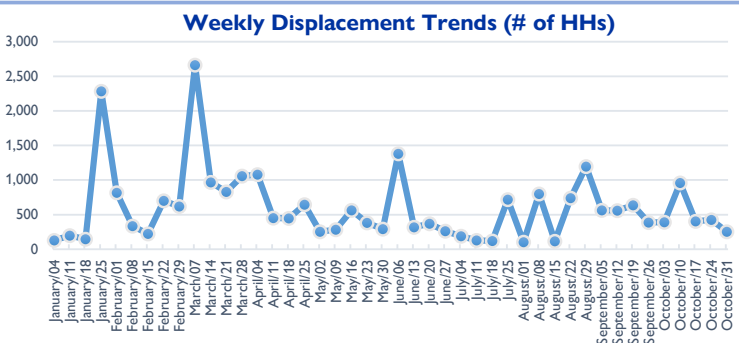
IDP HH WHO LEFT DISPLACED LOCATIONS

Since the beginning of 2020, DTM also identified other **1,284** previously displaced households who left the displaced location and moved to either their place of origin or some other displaced location.

Displaced People
 26,376 Households
 158,256 Individuals
*Reported during Jan 01 - Oct 31, 2020

UPDATE: Additional **84** HHs were displaced between Oct 18 - Oct 24, 2020, and have been added in the total households.

Returned People
 1,577 Households
 9,462 Individuals
*Reported during Jan 01 - Oct 31, 2020



- IDPs Shelter Types**
- In Isolated/dispersed settlements (detached from a location)
 - In Settlements (Grouped of Families) Urban and Rural
 - In Rented Accommodation
 - With Host Families who are Relatives (no rental fee)
 - In Other Private Building

