

# Coronavirus disease 2019 (COVID-19)

DATA AS REPORTED BY THE THAI MINISTRY OF PUBLIC HEALTH

24 APRIL 2020

## WHO Thailand Situation Report

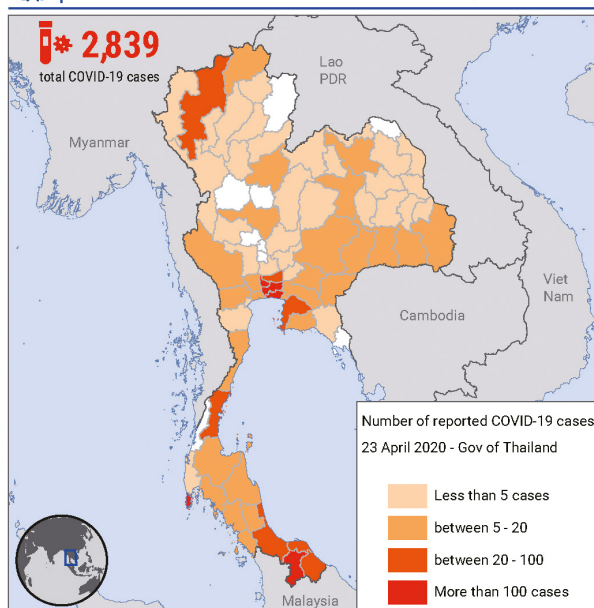


**THAILAND**  
SITUATION IN THE  
PAST **24** HOURS

## HIGHLIGHTS

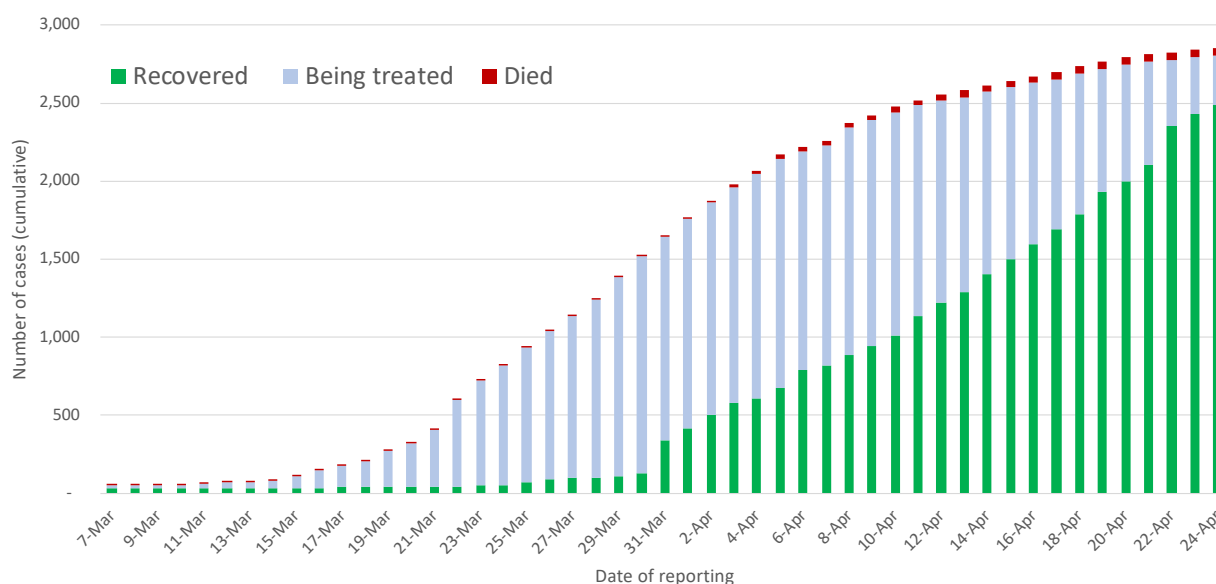
- On the 23rd of April 2020, 15 new cases of laboratory-confirmed COVID-19 were announced by the Ministry of Public Health of Thailand, bringing the total number of cases to 2,854.
- Of these, 87.2% (2,490) have recovered, about 1.8% (50) have died, and 11% (314) are receiving treatment.
- Only one case was identified in a person returning from outside Thailand; likely reflecting restrictions on entry.
- Nine of the new cases are close contacts of previously confirmed cases, one case attended a crowded place and four cases were detected through enhanced surveillance (active case finding) in Yala Province.
- To date, 68 of the total 77 provinces have reported cases. 35 of these 68 provinces have not reported any new cases during the past 14 days. The three provinces with the most reported cases are Bangkok (1,457), Phuket (200) and Nonthaburi (152). Nine provinces have never reported any case.

 **THAILAND: COVID-19 cases** (as of 23 April 2020)



Map Sources: UN Cartographic Section, Royal Thai Survey Dept., Gov. of Thailand

## COVID-19 CASES IN THAILAND, BY DATE OF REPORTING



Source: MoPH, 24 April 2020

# UPDATE FROM THE MINISTRY OF PUBLIC HEALTH

## Laboratory testing

- In total, 123 laboratories have been certified for COVID-19 testing. At present, approximately 20,000 samples can be tested in a day (10,000 in Bangkok, and 10,000 in the provinces).
- Capacity for testing is being established in an additional 53 laboratories. It is expected that by end April, all provinces will have a laboratory that can test for COVID-19.

## Essential services - Telemedicine

- In order to reduce the risk of COVID-19 transmission in healthcare facilities, the Ministry of Public Health is working to establish telemedicine services

- The service is currently being piloted in 27 hospitals, mostly located in or nearby Bangkok.
- Initial findings indicate that 30% of patients can be treated through telemedicine and in the past 2 months, 4,316 patients have been treated through this service.
- At present, the service telemedicine is offered only to existing patients on a voluntary basis, and for certain chronic medical conditions, including diabetes and hypertension, etc.
- The service includes on-line consultation via a video call and home delivery of medicine.
- No additional costs are charged to telemedicine patients, other than costs of delivery.
- The Ministry of Public Health is exploring the expansion of this service to other diseases and hospitals.

## ADVICE FOR THE PUBLIC

### COVID-19 AND YOUNG PEOPLE PROTECT YOURSELF

#COVID19 #ITHRIVE



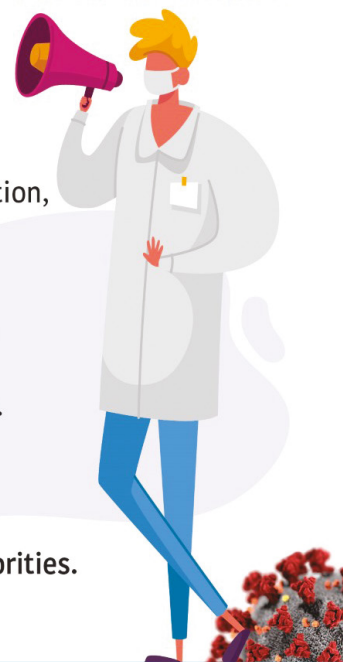
**Young people are also at risk** for severe sickness, hospitalization, and death from COVID-19.



**Don't risk your life.** Stay home if you are asked to; meet up with friends online or by phone.



**Wash your hands and follow guidance** from your local authorities.



## What who is doing to provide support to Thailand

WHO Thailand is in frequent direct contact with the Royal Thai Government through the Ministry of Public Health, sharing information on key developments, guidelines and scientific updates.

WHO supports the wider UN response, including working with key partners and the Ministry of Public Health to support migrant populations in Thailand. WHO also provides information and advice to staff of the UN system in Thailand.

## Media

WHO Thailand's website, Twitter and Facebook accounts, regularly provide content on all aspects of the outbreak in Thailand and around the world. Media queries can be directed to [sethawebmaster@who.int](mailto:sethawebmaster@who.int) and [kanpirom@who.int](mailto:kanpirom@who.int)

USEFUL LINKS



- The Thailand COVID19 situation report is available in Thai and English
- Regular updates on WHO's response in Thailand
- Global figures and technical advice from WHO



World Health Organization

Thailand

## World Health Organization Country Office for Thailand

4<sup>th</sup> Fl. Permanent Secretary Building 3  
Ministry of Public Health, Nonthaburi Thailand 11000

Media queries: [sethawebmaster@who.int](mailto:sethawebmaster@who.int) and [kanpirom@who.int](mailto:kanpirom@who.int)



[www.who.int/thailand](http://www.who.int/thailand)



WHOThailand



@WHOThailand



@WHOThailand