



**Government of India**  
**Ministry of Earth Sciences**  
**Earth System Science Organisation**



**Earth System Science Organisation**  
**India Meteorological Department**

## PRESS RELEASE-3

Time of issue: 1300 hours IST

Dated: 05-01-2019

### **Sub: Cyclonic storm “PABUK” over Andaman Sea & neighbourhood** **Cyclone warning for Andaman Islands “ORANGE MESSAGE”**

Yesterday’s cyclonic storm “PABUK” over Gulf of Thailand and adjoining areas moved west-northwestwards and emerged into Andaman Sea in the morning (0830 hrs IST) of today, the 5<sup>th</sup> January, 2019. It lay centered at 0830 hours IST of today, the 5<sup>th</sup> January near latitude 9.1°N and longitude 98.1°E, about 650 km east-southeast of Port Blair. It is very likely to move west-northwestwards for some more time. Thereafter, it is very likely to move northwestwards and cross Andaman Islands around evening/night of 06<sup>th</sup> January as a cyclonic storm with a wind speed of 70-80 kmph gusting to 90 kmph. Thereafter, it is very likely to move north-northwestwards and then recurve northeastwards towards Myanmar coast and weaken gradually during 7<sup>th</sup>-8<sup>th</sup> January, 2019.

Forecast track and intensity are given in the following table:

Date/Time(IST)	Position (Lat.°N/ long. °E)	Maximum sustained surface wind speed (Kmph)	Category of cyclonic disturbance
05.01.19/0830	9.1/98.1	70-80 gusting to 90	Cyclonic Storm
05.01.19/1130	9.2/97.6	70-80 gusting to 90	Cyclonic Storm
05.01.19/1730	9.6/96.7	70-80 gusting to 90	Cyclonic Storm
05.01.19/2330	10.1/95.8	75-85 gusting to 95	Cyclonic Storm
06.01.19/0530	10.5/94.8	75-85 gusting to 95	Cyclonic Storm
06.01.19/1730	11.6/92.8	70-80 gusting to 90	Cyclonic Storm
07.01.19/0530	12.3/91.7	65-75 gusting to 85	Cyclonic Storm
07.01.19/1730	13.1/90.5	50-60 gusting to 70	Deep Depression
08.01.19/0530	14.2/90.2	50-60 gusting to 70	Deep Depression
08.01.19/1730	16.1/91.1	40-50 gusting to 60	Depression

#### **Warnings:**

##### **(i) Heavy rainfall warning**

Rainfall at many places with heavy falls at isolated places very likely to commence over Andaman Islands from today, the 5<sup>th</sup> January evening. Intensity is very likely to increase with rainfall at most places with heavy to very heavy rainfall at a few places on 6<sup>th</sup> and at isolated places on 7<sup>th</sup> over Andaman Islands.

##### **(ii) Wind warning**

- Gale wind speed reaching 70-80 kmph gusting to 90 kmph is likely to prevail over Andaman Sea and along & off south Myanmar & Thailand coasts till today, the 5<sup>th</sup> evening.

Contact: Cyclone Warning Division, Office of the Director General of Meteorology,  
 India Meteorological Department, Ministry of Earth Sciences.

Phone: (91) 11-24652484, FAX: (91) 11-24643128, 24623220, E-mail: cwdhq2008@gmail.com, Website: [rsmcnewdelhi.imd.gov.in](http://rsmcnewdelhi.imd.gov.in)

Spatial rainfall distribution: Isolated: <25%, A few: 26-50%, Many: 51-75%, Most: 76-100%

Rainfall amount (mm): Heavy rain: 64.5 – 115.5, Very heavy rain: 115.6 – 204.4, Extremely heavy rain: 204.5 or more.

- Gale wind speed reaching 70-80 kmph gusting to 90 kmph is likely to prevail over Andaman Islands, Andaman Sea and adjoining areas of eastcentral and southeast Bay of Bengal from the 5<sup>th</sup> evening to 7<sup>th</sup> morning. It is very likely to gradually decrease thereafter becoming 50-60 kmph gusting to 70 kmph over southeast Bay of Bengal, Andaman Islands and adjoining Andaman Sea & eastcentral Bay of Bengal by 8<sup>th</sup> morning and 40-50 kmph gusting to 60 kmph over eastcentral and adjoining southeast Bay of Bengal by 8<sup>th</sup> evening.
- Squally wind speed reaching 40-50 kmph gusting to 60 kmph is likely to over Nicobar Islands till 6<sup>th</sup>.

**(iii) Sea condition**

- The sea condition will be high over Andaman Sea along and off south Myanmar and Thailand coast till 5<sup>th</sup> evening.
- The sea condition will be high over Andaman Islands, Andaman Sea and adjoining areas of eastcentral and southeast Bay of Bengal from the evening of 5<sup>th</sup> till the morning of 7<sup>th</sup>. Thereafter, it will become very rough over southeast Bay of Bengal, Andaman Islands and adjoining Andaman Sea and eastcentral Bay of Bengal by 8<sup>th</sup> morning and rough over eastcentral and adjoining southeast Bay of Bengal by 8<sup>th</sup> evening.
- The sea condition will be very rough over Nicobar Islands till 6<sup>th</sup>.

**(iv) Storm Surge Warning**

Storm surge of height of about 0.5 m above the astronomical tides likely to inundate the low lying areas of Andaman Islands at the time of landfall.

**(v) Damage Expected over Andaman Islands:**

Damage to thatched huts, minor damage to power and communication lines due to breaking of branches. Major damage to Kutcha and damage to Pucca roads. Uprooting of small trees and some damage to paddy crops, banana, papaya trees and orchards. Sea water inundation in low lying areas after erosion of Kutcha embankments.

**(vi) Action suggested**

- People in Andaman Islands are advised to remain in safe places.
- Total suspension of fishing operation over Andaman Sea and adjoining southeast and eastcentral Bay of Bengal during 5<sup>th</sup>-7<sup>th</sup> January and over eastcentral & adjoining southeast Bay of Bengal on 8<sup>th</sup>.
- Fishermen are advised not to venture into Andaman Sea and adjoining southeast and eastcentral Bay of Bengal during the same period.

The system is under continuous surveillance and concerned state Governments are being informed regularly.

Next update will be issued tomorrow, the 6<sup>th</sup> January, 2019 at 1300 hrs IST. Kindly visit [www.imd.gov.in](http://www.imd.gov.in) and [www.rsmcnewdelhi.imd.gov.in](http://www.rsmcnewdelhi.imd.gov.in) for updates on the system.

---

Contact: Cyclone Warning Division, Office of the Director General of Meteorology,  
India Meteorological Department, Ministry of Earth Sciences.

Phone: (91) 11-24652484, FAX: (91) 11-24643128, 24623220, E-mail: [cwdhq2008@gmail.com](mailto:cwdhq2008@gmail.com), Website: [rsmcnewdelhi.imd.gov.in](http://rsmcnewdelhi.imd.gov.in)

Spatial rainfall distribution: Isolated: <25%, A few: 26-50%, Many: 51-75%, Most: 76-100%

Rainfall amount (mm): Heavy rain: 64.5 – 115.5, Very heavy rain: 115.6 – 204.4, Extremely heavy rain: 204.5 or more.

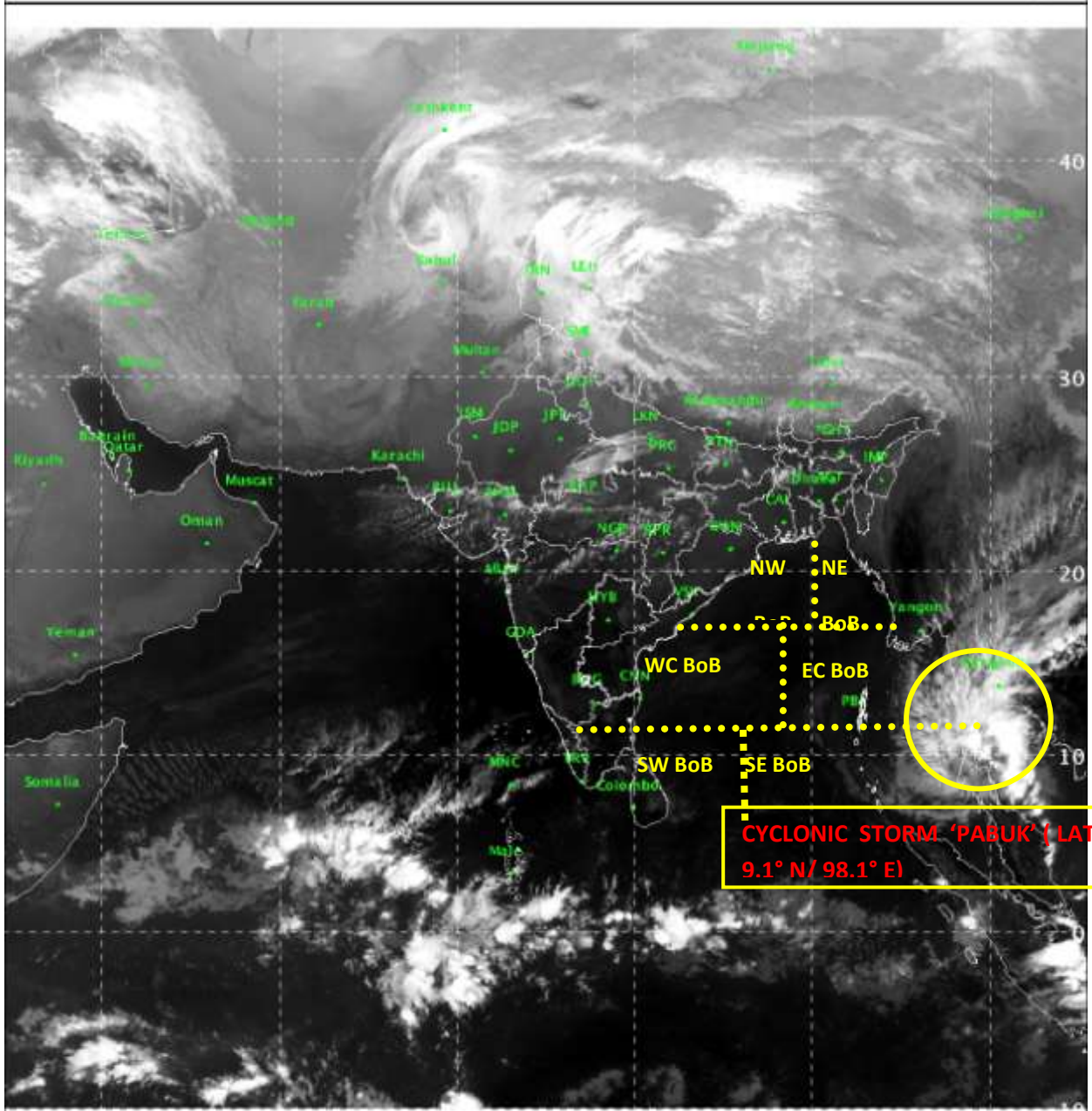
SAT :INSAT-3D IMG

05-01-2019/03:30 GMT

IMG\_TIR1 10.8 um

05-01-2019/09:00 IST

L1C Mercator (LINEAR STRETCH: 1.0% )



517

865

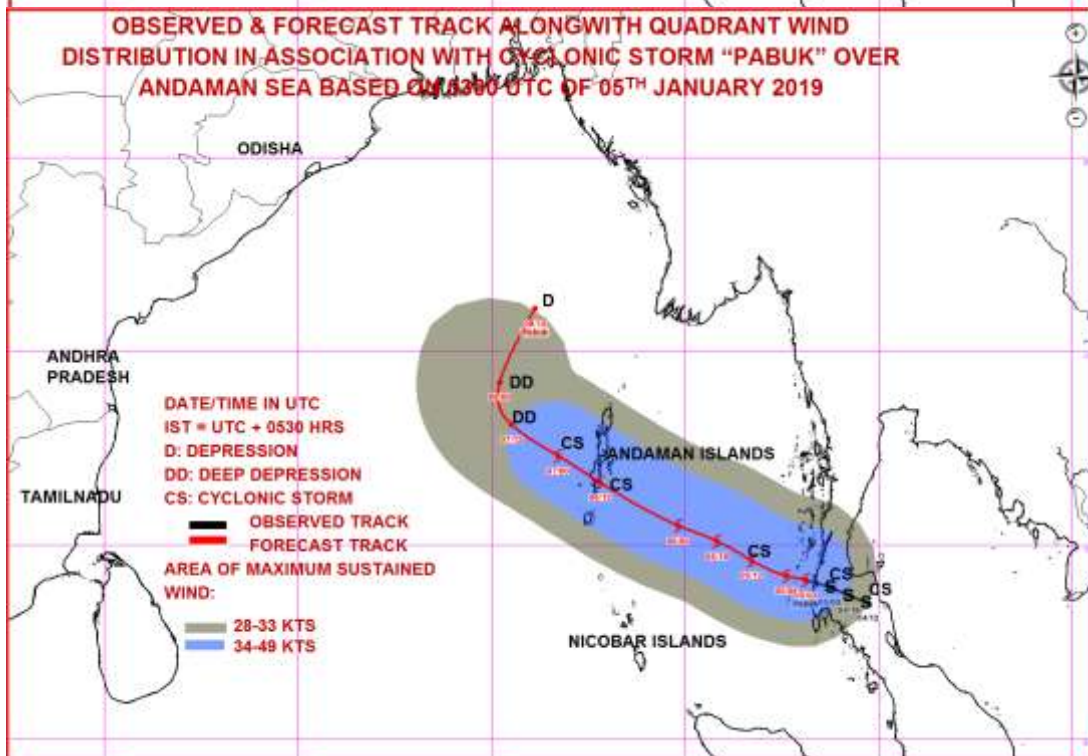
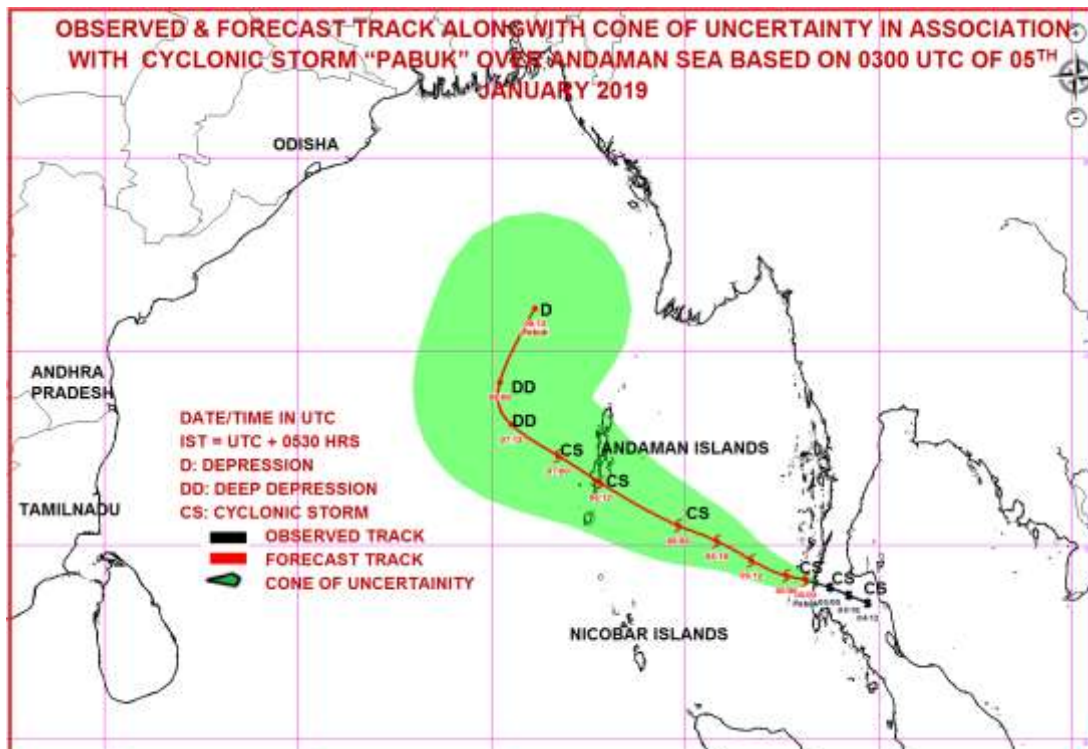
IMD/Delhi

Contact: Cyclone Warning Division, Office of the Director General of Meteorology,  
India Meteorological Department, Ministry of Earth Sciences.

Phone: (91) 11-24652484, FAX: (91) 11-24643128, 24623220, E-mail: [cwdhq2008@gmail.com](mailto:cwdhq2008@gmail.com), Website: [rsmcnewdelhi.imd.gov.in](http://rsmcnewdelhi.imd.gov.in)

Spatial rainfall distribution: Isolated: <25%, A few: 26-50%, Many: 51-75%, Most: 76-100%

Rainfall amount (mm): Heavy rain: 64.5 – 115.5, Very heavy rain: 115.6 – 204.4, Extremely heavy rain: 204.5 or more.



Contact: Cyclone Warning Division, Office of the Director General of Meteorology,  
India Meteorological Department, Ministry of Earth Sciences.

Phone: (91) 11-24652484, FAX: (91) 11-24643128, 24623220, E-mail: [cwdhq2008@gmail.com](mailto:cwdhq2008@gmail.com), Website: [rsmcnewdelhi.imd.gov.in](http://rsmcnewdelhi.imd.gov.in)

Spatial rainfall distribution: Isolated: <25%, A few: 26-50%, Many: 51-75%, Most: 76-100%

Rainfall amount (mm): Heavy rain: 64.5 – 115.5, Very heavy rain: 115.6 – 204.4, Extremely heavy rain: 204.5 or more.