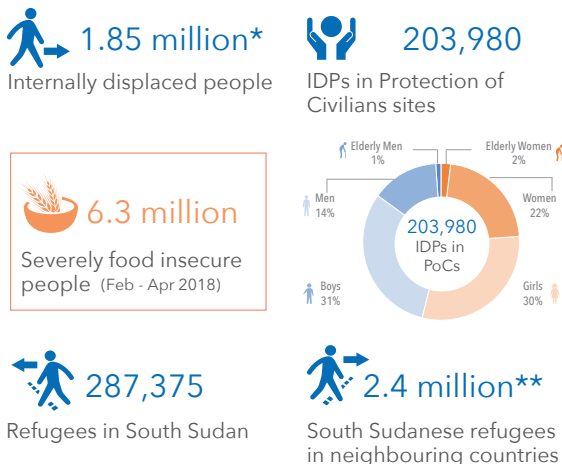
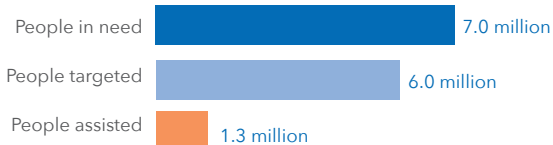


In February 2018, Integrated Phase Classification (IPC) analysis estimated that in the worst case scenario, 6.3 million people, or 57 per cent of the population of South Sudan, would be severely food insecure from February to April 2018. In Unity, Jonglei, Upper Nile, and Central Equatoria, which are affected by recurring outbreaks of violent conflict and displacement, the proportion of people suffering from severe food insecurity ranges from 52 to 62 percent - more than half the states' combined population. Population displacement was reported in Unity, following fighting between government and opposition forces in Bauw, Koch County from 16 to 17 February, where there were also reports of civilian deaths and burning of homes. Brief clashes were also reported in Leer town. In Central Equatoria, over 3,360 IDPs (653 households) were displaced from Makaia to Yei town, after fighting broke out. In Eastern Equatoria, health partners reported suspected cases of meningitis, with 162 suspected cases and 30 deaths in Lyre and Imurok payams, Torit County. As of the end of February, partners were still investigating whether the illness and the deaths were as a result of meningitis.

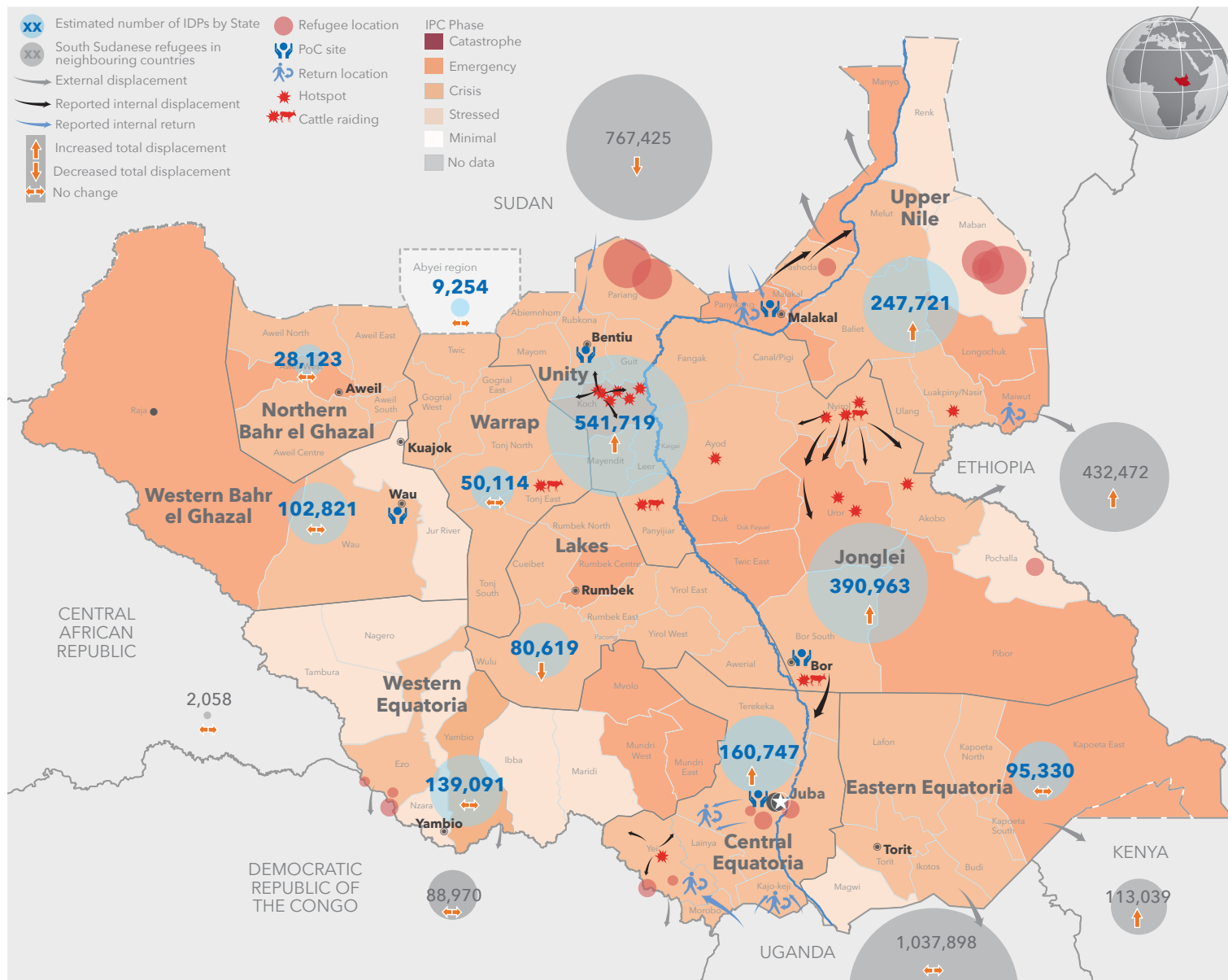
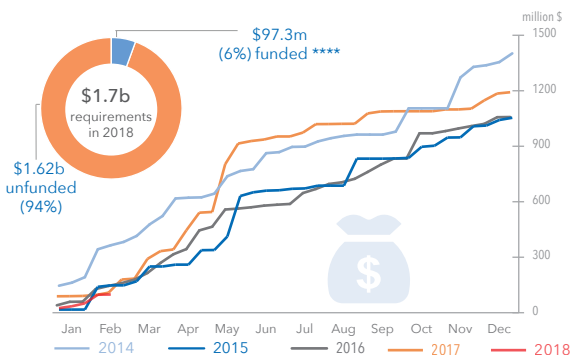
KEY FIGURES



NEEDS AND RESPONSE 2018***



FUNDING STATUS 2018****



*The number of internally displaced persons (IDPs) is updated with the latest figures and estimates available. The number of people displaced each month does not necessarily result in a rise in the overall number of IDPs as many people are "re-displaced" and had already been counted as IDPs. | ***The number of South Sudanese refugees reported includes those who arrived before December 2013. | ****HRP 2018. | ****As recorded in the Financial Tracking System (FTS) as of 31 Jan 2018. Further pledges have been announced but not yet tracked. | IDP: Internally Displaced People. PoC: Protection of Civilians. | **Creation date:** 08 March 2018 Sources: IOM, UNHCR, OCHA and humanitarian partners | Feedback: ochasouthsudan@un.org.

The boundaries and names shown and the designations used on this map do not imply official endorsement or acceptance by the United Nations. Final boundary between the Republic of South Sudan and the Republic of Sudan has not yet been determined. Final status of Abyei region is not yet determined.