



**Government of India
Ministry of Earth Sciences
Earth System Science Organisation**



**Earth System Science Organisation
India Meteorological Department**

PRESS RELEASE - 7

Time of issue: 1000 hours IST

Dated: 04-12-2017

**Sub: (i) Very Severe Cyclonic Storm 'OCKHI' over eastcentral and adjoining southeast Arabian Sea
(ii) Well marked low pressure area over southeast Bay of Bengal**

(i) Very Severe Cyclonic Storm 'OCKHI' over eastcentral Arabian Sea

Yesterday's **Very Severe Cyclonic Storm "Ockhi"** over eastcentral and adjoining southeast Arabian Sea moved north-northeastwards and lay centered at 0530 hrs IST of 04th December, 2017 over eastcentral Arabian Sea near Latitude 14.5° N and Longitude 68.5° E, about 590 km north-northwest of Amini Divi, 690 km south-southwest of Mumbai and 870 km south-southwest of Surat. It is very likely to move north-northeastwards, weaken gradually and cross south Gujarat and adjoining north Maharashtra coasts near Surat as a deep depression by mid-night of 5th December 2017.

The forecast location and intensity are given in table:

Date/ Time(IST)	Position (Lat. °N/ long. °E)	Maximum sustained surface wind speed (kmph)	Category of cyclonic disturbance
04/0530	14.5/68.5	125-135 GUSTING TO 150	VERY SEVERE CYCLONIC STORM
04/1130	15.3/69.1	120-130 GUSTING TO 145	VERY SEVERE CYCLONIC STORM
04/1730	16.1/69.6	110-120 GUSTING TO 135	SEVERE CYCLONIC STORM
04/2330	16.9/70.2	100-110 GUSTING TO 120	SEVERE CYCLONIC STORM
05/0530	17.7/70.8	80-90 GUSTING TO 100	CYCLONIC STORM
05/1730	19.6/72.0	55-65 GUSTING TO 75	DEEP DEPRESSION
06/0530	21.3/73.2	40-50 GUSTING TO 60	DEPRESSION
06/1730	23.0/74.4	20-30 GUSTING TO 40	LOW

Warning:

(i) Heavy Rainfall Warning:

- Light to moderate rainfall is very likely at a few places over Saurashtra and south Gujarat region on 4th December. Light to moderate rainfall at many places with heavy rainfall at isolated places is very likely over Saurashtra and south Gujarat region on 05th December and light to moderate rainfall over Gujarat region on 6th December (upto around noon).
- Light to moderate rainfall at many places with isolated heavy rainfall is also likely over north Konkan on 5th December.

(ii) Wind warning:

- Squally wind speed reaching 50-60 kmph gusting to 70 kmph very likely along & off north Maharashtra and South Gujarat coasts from today, the 4th night to 6th December 2017 morning.

Contact: Cyclone Warning Division, Office of the Director General of Meteorology,
India Meteorological Department, Ministry of Earth Sciences.

Phone: (91) 11-24652484, FAX: (91) 11-24643128, 24623220, E-mail: cwdhq2008@gmail.com, Website: rsmcnewdelhi.imd.gov.in

Spatial rainfall distribution: Isolated: <25%, A few: 26-50%, Many: 51-75%, Most: 76-100%

Rainfall amount (mm): Heavy rain: 64.5 – 115.5, Very heavy rain: 115.6 – 204.4, Extremely heavy rain: 204.5 or more.

(iii) Sea condition:

- Sea condition would be rough to very rough along & off north Maharashtra and South Gujarat coasts from today, the 4th night to 6th December 2017 morning.

(iv) Action suggested

- **South Gujarat and north Maharashtra coasts:** Fishermen are advised not to venture into the Sea along & off South Gujarat and north Maharashtra coasts from 4th December to 6th morning.

(ii) Well marked low pressure area over southeast Bay of Bengal

The well marked low pressure area lies over southeast Bay of Bengal and adjoining south Andaman Sea & equatorial Indian Ocean persists over the same region in the morning of today, the 4th December, 2017. It is very likely to become a depression over southeast Bay of Bengal & neighbourhood during next 24 hours and into a deep depression during subsequent 48 hours. It is very likely to move west-northwestwards towards north Tamil Nadu - south Andhra Pradesh coasts during next 3-4 days.

Sea condition over southwest Bay and adjoining central Bay of Bengal would be very rough from 5th December onwards. Hence, fishermen are advised not venture into deep sea off north Tamil Nadu and south Andhra Pradesh coast from 5th December 2017 onwards.

Both the systems are under constant surveillance. For updates visit www.rsmcnewdelhi.imd.gov.in

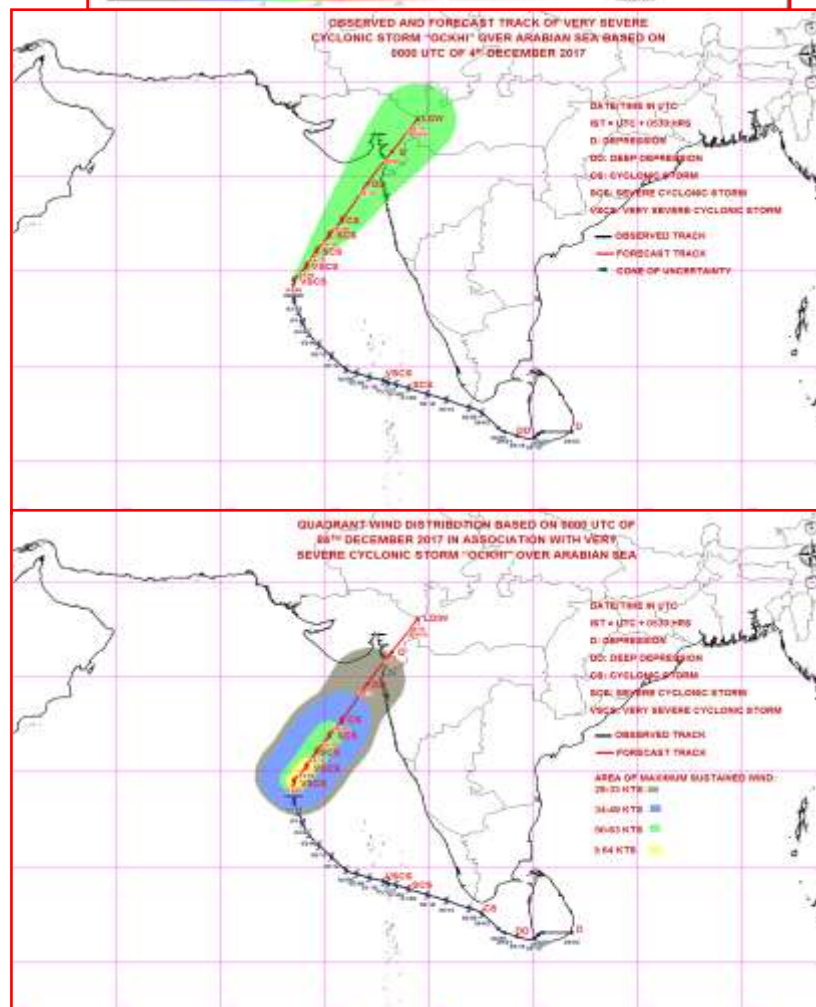
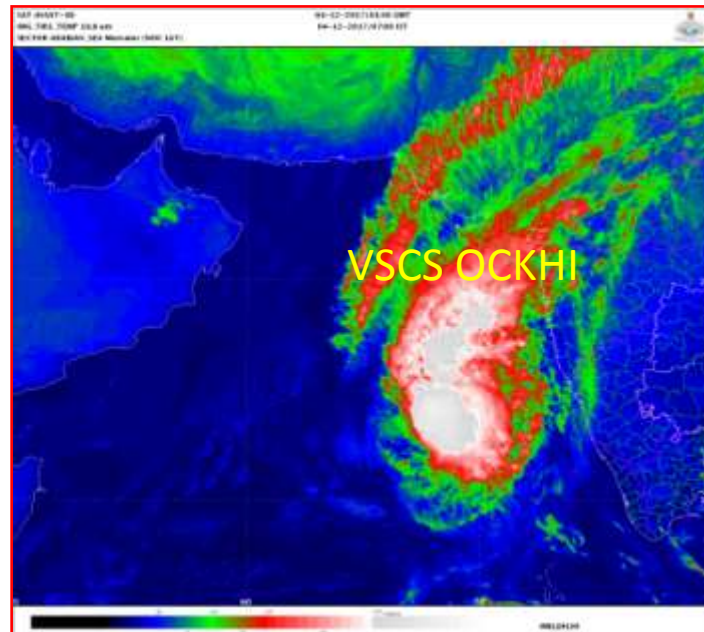
Contact: Cyclone Warning Division, Office of the Director General of Meteorology,
India Meteorological Department, Ministry of Earth Sciences.

Phone: (91) 11-24652484, FAX: (91) 11-24643128, 24623220, E-mail: cwdhq2008@gmail.com, Website: rsmcnewdelhi.imd.gov.in

Spatial rainfall distribution: Isolated: <25%, A few: 26-50%, Many: 51-75%, Most: 76-100%

Rainfall amount (mm): Heavy rain: 64.5 – 115.5, Very heavy rain: 115.6 – 204.4, Extremely heavy rain: 204.5 or more.

(i) Graphics in association with VSCS Ockhi



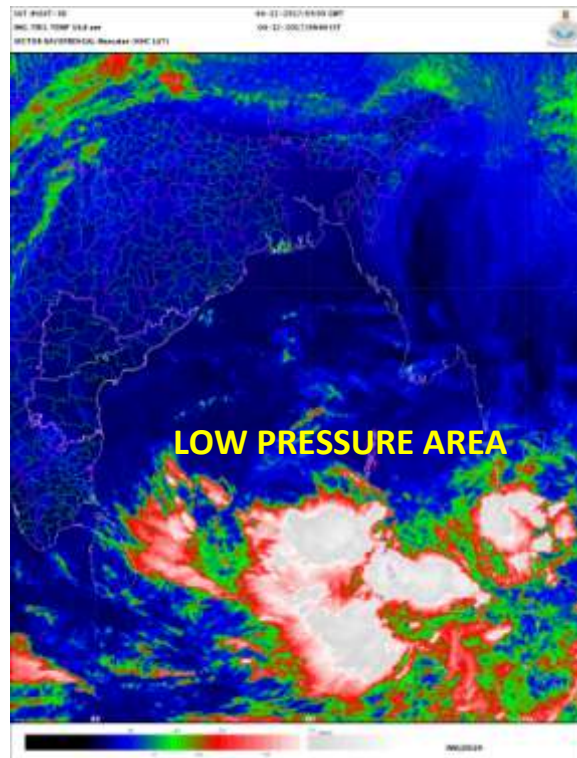
Contact: Cyclone Warning Division, Office of the Director General of Meteorology,
India Meteorological Department, Ministry of Earth Sciences.

Phone: (91) 11-24652484, FAX: (91) 11-24643128, 24623220, E-mail: cwdhq2008@gmail.com, Website: rsmcnewdelhi.imd.gov.in

Spatial rainfall distribution: Isolated: <25%, A few: 26-50%, Many: 51-75%, Most: 76-100%

Rainfall amount (mm): Heavy rain: 64.5 – 115.5, Very heavy rain: 115.6 – 204.4, Extremely heavy rain: 204.5 or more.

(ii) Typical Satellite imagery in association with low pressure area over southeast Bay of Bengal



Contact: Cyclone Warning Division, Office of the Director General of Meteorology,
India Meteorological Department, Ministry of Earth Sciences.

Phone: (91) 11-24652484, FAX: (91) 11-24643128, 24623220, E-mail: cwdhq2008@gmail.com, Website: rsmcnewdelhi.imd.gov.in

Spatial rainfall distribution: Isolated: <25%, A few: 26-50%, Many: 51-75%, Most: 76-100%

Rainfall amount (mm): Heavy rain: 64.5 – 115.5, Very heavy rain: 115.6 – 204.4, Extremely heavy rain: 204.5 or more.