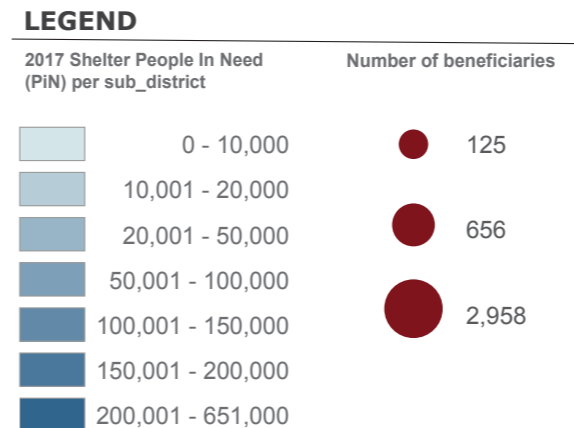
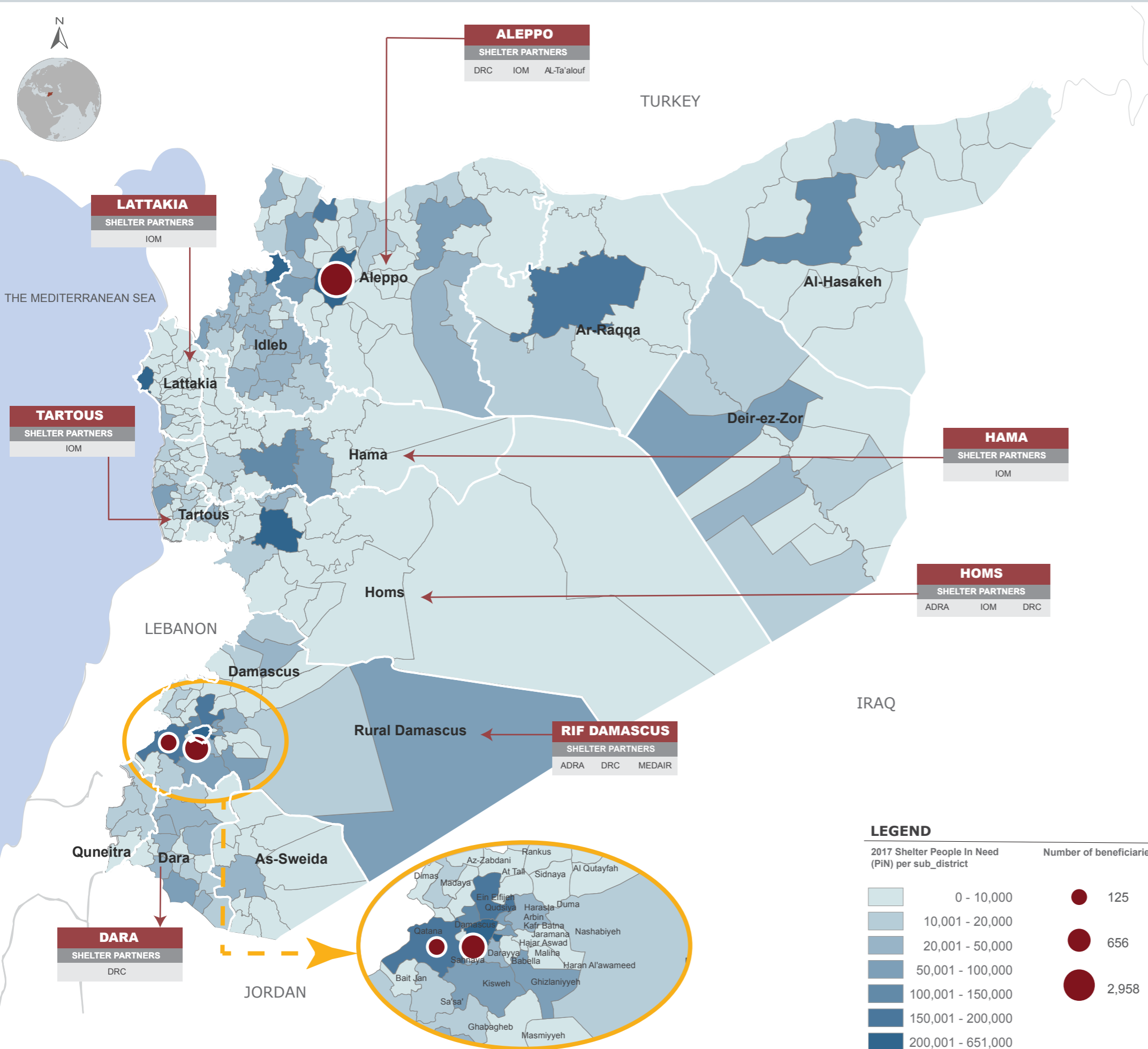


SYRIA: SHELTER RESPONSE SNAPSHOT

Reporting Period: January 2017



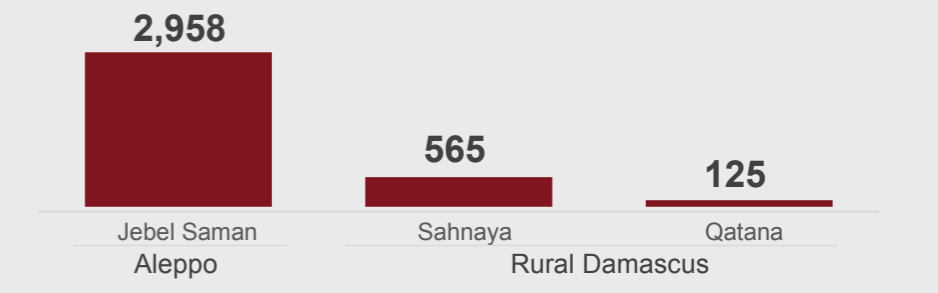
TOTAL BENEFICIARIES REACHED / ASSISTED

3,648

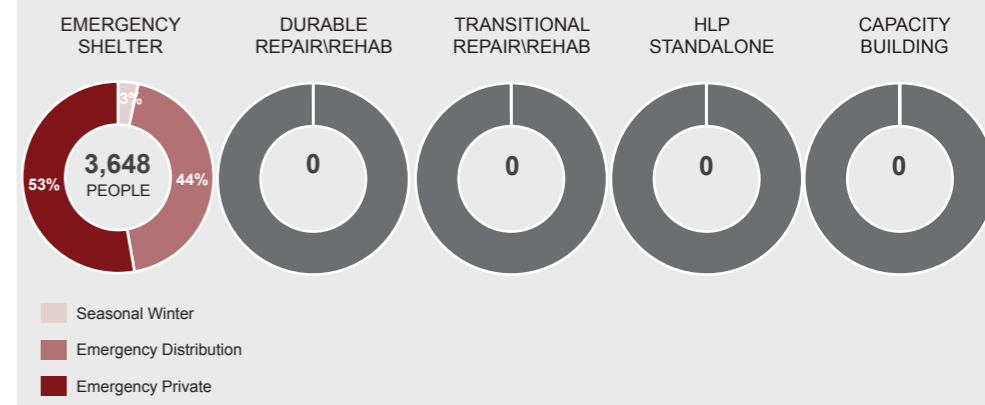
4.2 M overall People in Need (PIN)
742 K targeted PIN / HRP 2017:

1% of 303,385 targeted PIN (in shelter) by Syria Hub

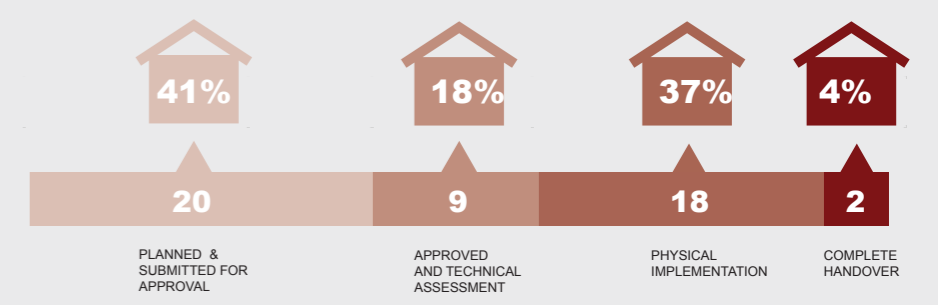
BENEFICIARIES REACHED PER GOVERNORATE



BENEFICIARIES REACHED BY TYPE OF SUPPORT



SHELTER PROJECTS PER STAGE



SHELTER SECTOR PARTNERS

CO-LEAD AGENCIES		SHELTER PARTNERS				
		ACF	ADRA	Al-Berr	Al-INSHAAT	Aoun
		Al-Ihsan	Child Care Society (CCS)		DRC	
		IOM	MEDAIR	NRC	PUI	
		GOPA	RESCATE	SARC	SIF	
		STD	AL-Ta'alouf	UNHabitat	UNRWA	