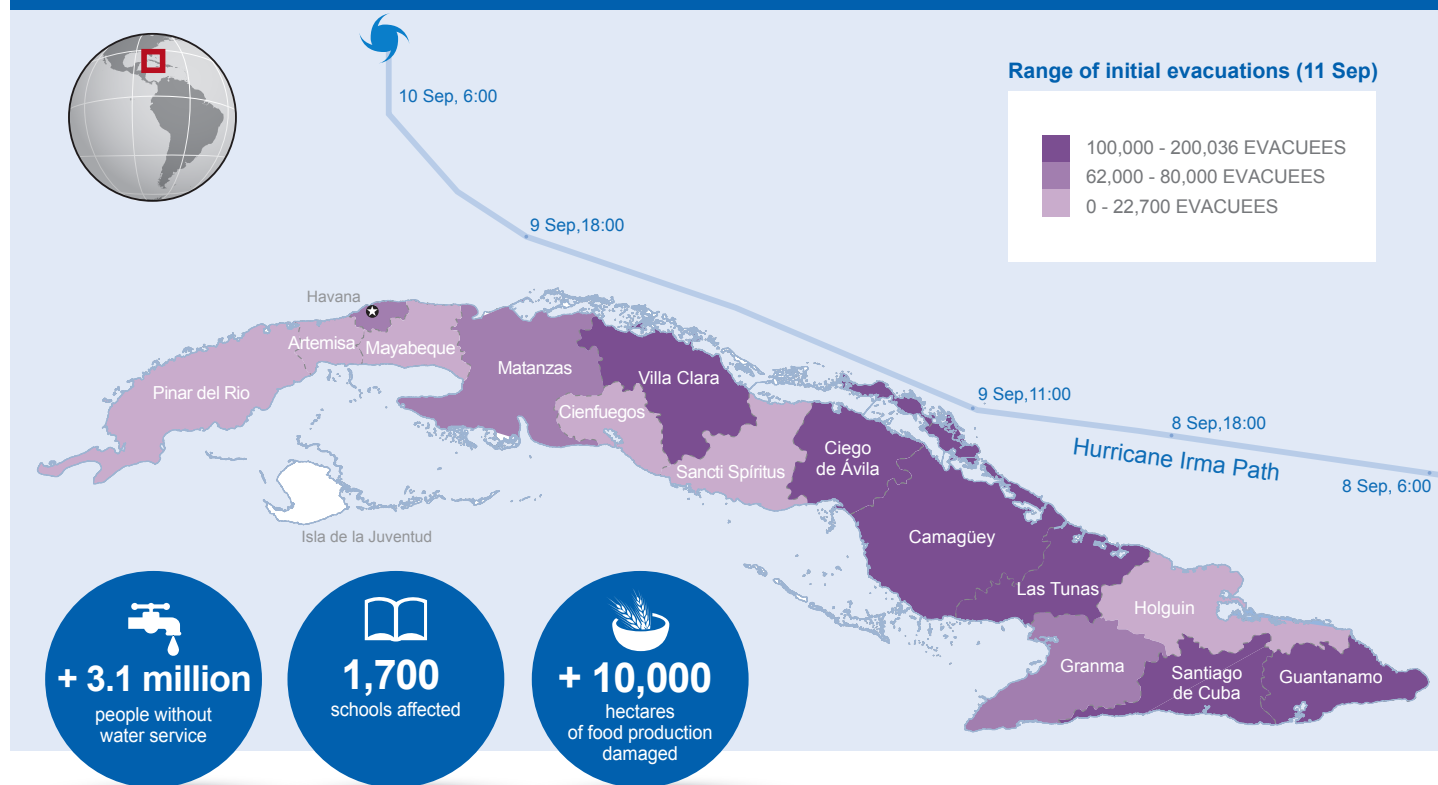


More than 3.1 million people remain without water service. Service has been restored in about half of the supply systems damaged by Hurricane Irma. Restoration of services depends mainly on the electric power system rehabilitation. Preliminary data shows severe damage to the housing sector. The hurricane damaged 95% of homes in Bolivia and Ciego de Avila's Municipalities. The 13 affected Cuban provinces are concentrating their forces on the recovery of vital services for the population and on the evaluation of the severity of the damage. Territorial teams have joined specialized brigades from the least affected provinces and the population, which help in the collection of debris and fallen trees and the cleaning of streets.

Map of evacuations in Cuba by province



Damages and needs		
ARTEMISA • 18 schools were affected	GRANMA • Hydraulic infrastructure was less damaged	SANCTI SPÍRITUS • 170 hectares of various crops were damaged • 4422 affected houses • 479 affected healthcare facilities
CAMAGÜEY • Water supply works with power - generated sets • Crops of plantains and yucca were almost entirely lost • 7900 affected houses	HOLGUIN • Hydraulic infrastructure was less damaged • Hydraulic infrastructure was less damaged • 1620 affected houses	SANTIAGO DE CUBA • Hydraulic infrastructure was less damaged
CIEGO DE ÁVILA • 6,500 hectares of assorted crops damaged • 95% of housing damaged • 438 affected healthcare facilities	HAVANA • Water supply limited only by pumping • 7804 affected houses • 2138 affected healthcare facilities • 500 affected schools	VILLA CLARA • 400 hectares of rice affected • 1,481 affected houses • 887 affected healthcare facilities
CIENFUEGOS • Only medical emergencies are addressed	LAS TUNAS • Strong winds damaged 200m pipelines • 3,000 hectares of vegetables, fruit and salt were lost • 1620 affected houses	The UN Disaster Management Team (UNDMT) continues to analyze the damage caused by Hurricane Irma and define the most affected areas. As part of the response plan, it was agreed to seek an immediate application to the Emergency Cash Grant Funds from the UN Office for the Coordination of Humanitarian Affairs (OCHA). In addition, the UN Emergency Technical Team (UNETT) is working on a first draft of the application to the Central Emergency Action Fund (CERF), a humanitarian fund established by the General Assembly of the United Nations.
GUANTANAMO • 948 houses were affected • Hydraulic infrastructure was damaged • Partial damage in 17 schools	MATANZAS • 2,500 hectares of plantain and other tubers damaged • 400-meter landslide occurred on the Via Blanca	

Note: Affected healthcare facilities include hospitals, polyclinics and family doctor's offices.

Creation date: 14 Sep 2017

Sources: Situation Report No. 6, Office of the Resident Coordinator, Cuba (as of 13 September).

Feedback: ocha-rolac@un.org Visit: www.reliefweb.int | redhum.org | www.unocha.org/rolac

The boundaries and names shown and the designations used on this map do not imply official endorsement or acceptance by the United Nations. The numbers presented are for orientation and not conclusive. Data collected from documents from national authorities and partners from 6 September to 14 September.