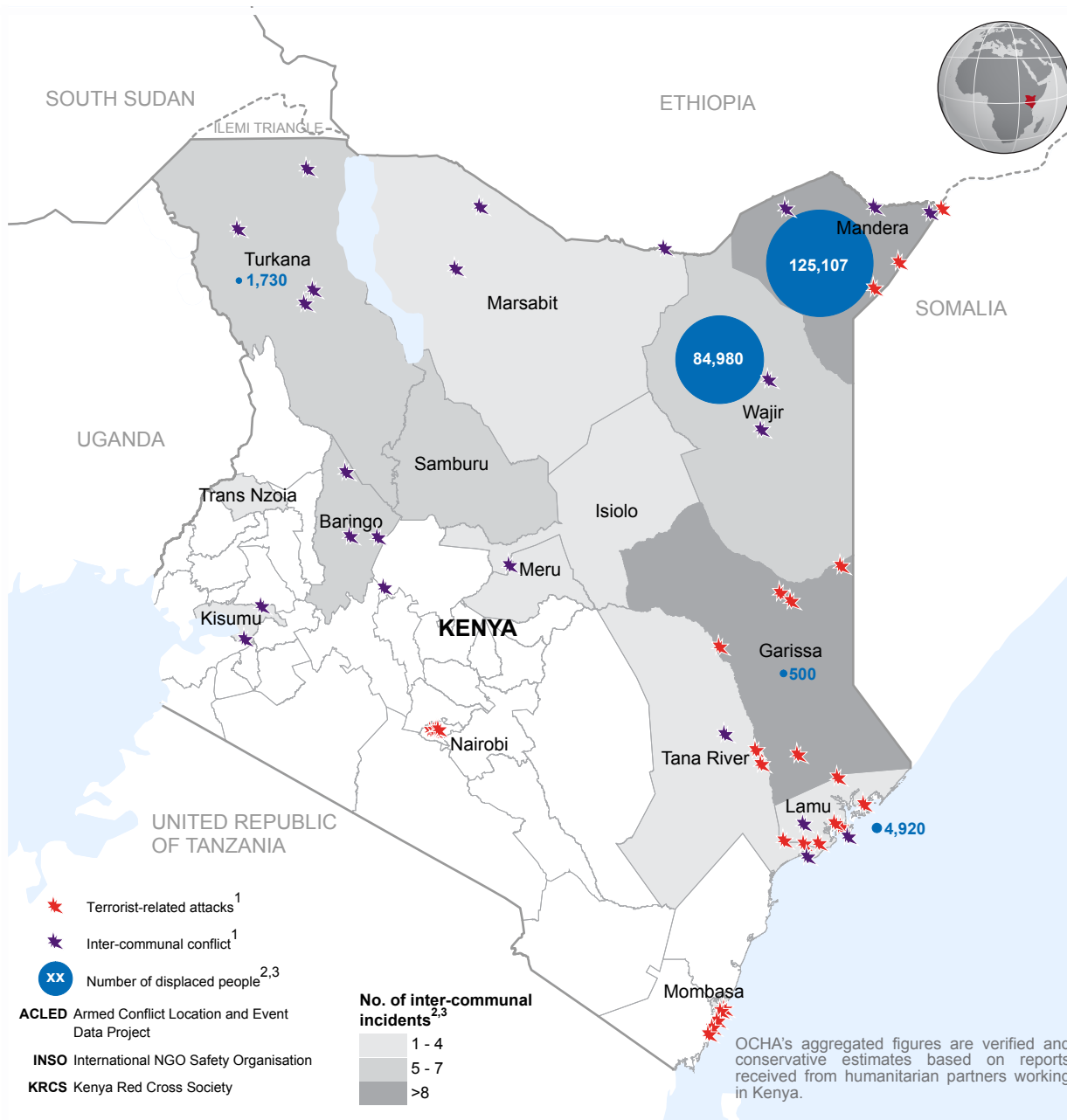


Overview

Violent conflicts involving pastoralists have become widespread and increasingly severe in the northern Rift Valley and north-eastern regions of Kenya. By end October 2014, 310 people had lost their lives, 214 had been injured and 220,177 had fled their homes as a result of inter-communal conflicts attributed to revenge attacks, competition over land and water resources, cattle rustling, and struggles over political representation.

The main areas of conflict are in Garissa, Mandera, Wajir and Isiolo Counties in north-eastern Kenya; Samburu, Turkana, Baringo, Trans Nzoia Counties; Nyakach and Kisumu in Nyanza County; and Kipini in Tana River County.⁴ There have been a growing number of attacks on civilians this year, such as the June Mpeketoni attacks; the November Kisauni and Likoni attacks in Mombasa, Lamu County; and more recently the November and December attacks in Mandera County, which have all been linked to increasing terrorist activity.

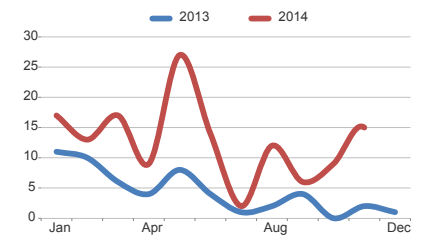
Local authorities are working with the Kenya Red Cross Society (KRCS) and other humanitarian partners to deliver both food and non-food assistance to those displaced or affected by the clashes. However, KRCS reports gaps and challenges in the humanitarian response, including protection.⁵ Poor roads and hilly terrain contribute to the high levels of insecurity and inaccessibility in some regions. KRCS reports existing efforts may need more engagement of top government leadership.



Impact of inter-communal conflict in 2014

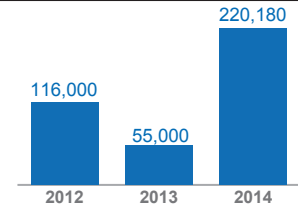
310 deaths^{2,3}
214 injuries^{2,3}
220,177 displaced²

Monthly inter-communal incidents in 2013 and 2014

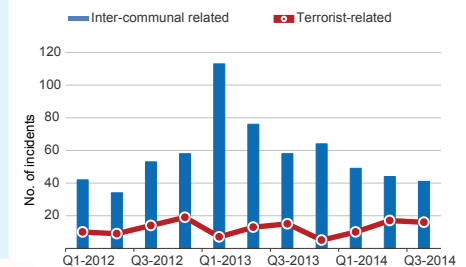


Displacement figures have sharply increased in 2014 due to increase in number and frequency of droughts leading to resource based clashes. Mandera County has particularly suffered from struggles over political representation and its proximity to both the Somali and Ethiopian borders.

People displaced from 2012 - 2014



Inter-communal vs. terrorists related incidents from 2012 - 2014



^{4,5} Kenya Red Cross Society Situational Updates, August-October 2014.

The boundaries and names shown and the designations used on this map do not imply official endorsement or acceptance by the United Nations.