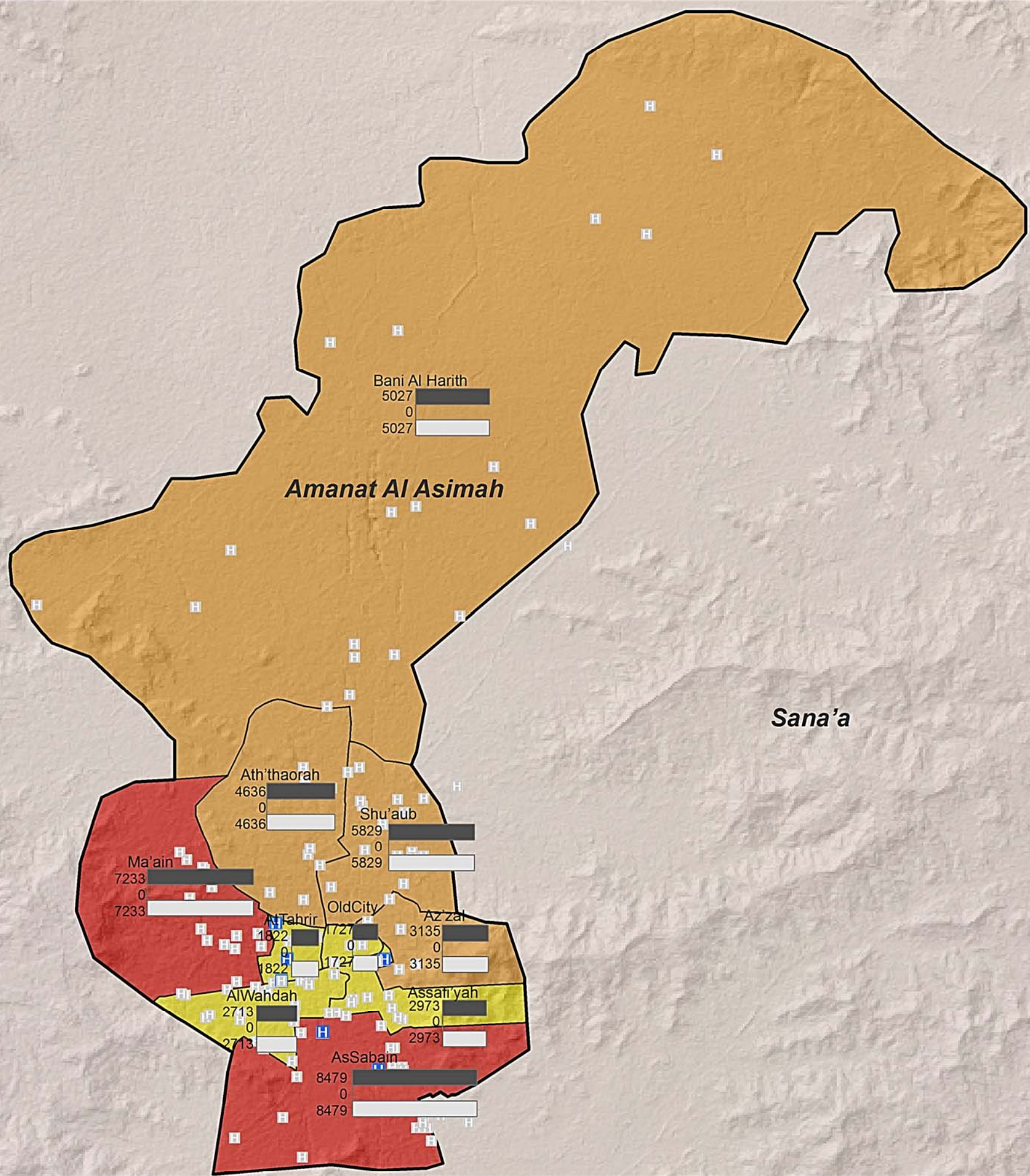


# Nutrition Cluster - Analysis of Geographic Prioritization in Amanat Al Asimat Governorate Based on U5 MAM Case Load April 2012



Amran



### Legend

- Health facilities
- (SFP) WFP, MOPH
- (OTP) UNICEF, MOPH
- (SFP, OTP) WFP, UNICEF, MOPH
- Governorate boundary
- Amanat Al Asimah

### Affected population

- 1727 - 3000
- 3001 - 6000
- 6001 - 8479

### Affected

- Affected
- Targeted
- GAP

Source:  
SAM (Nutrition cluster analysis of geographic prioritization April),  
Cartography (GoY / CSO).

Map scale for A3  
1:135,000  
6  
Kilometers



**iMMAP May 07/2012**

"This map is for planing purposes only and should not be used for navigation. iMMAP can't take responsibility for any damage or injure resulting from the use of this map. Administrative boundaries shown on this map do not imply endorsement by iMMAP or any of its partners."

**www.immap.org**  
Contact: jgonzalez@immap.org  
MHezam@immap.org