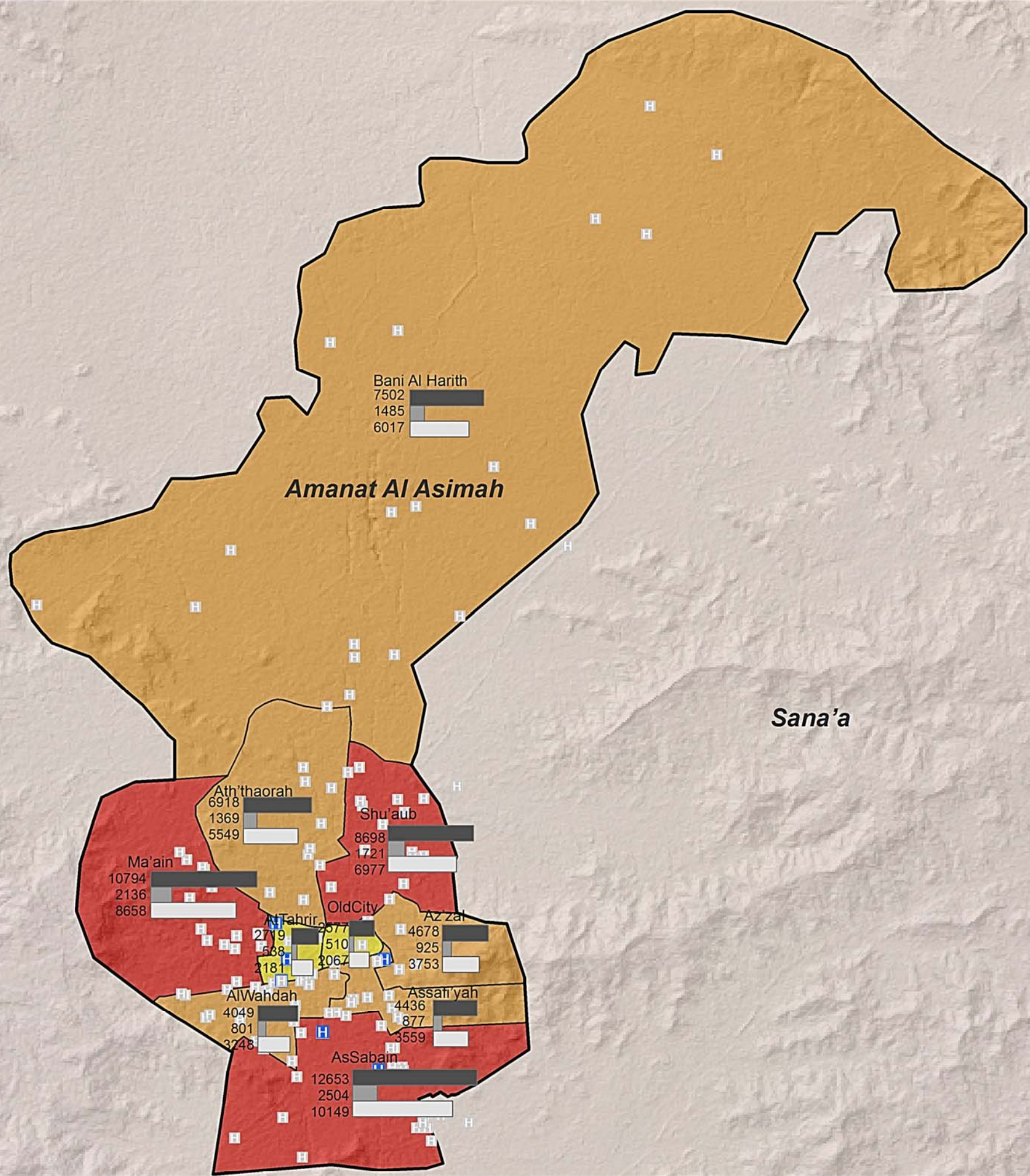


Nutrition Cluster - Analysis of Geographic Prioritization in Amanat Al Asimat Governorate Based on U5 GAM Case Load April 2012



Amran



Legend

- Health facilities
- (SFP) WFP, MOPH
- (OTP) UNICEF, MOPH
- (SFP,OTP)WFP,UNICEF,MOPH
- Governorate boundary
- Amanat Al Asimah

Affected population

- 2577- 4000
- 4001 - 8000
- 8001 - 12653

Affected

- Affected
- Targeted
- GAP

Source:
SAM (Nutrition cluster analysis of geographic prioritization April),
Cartography (GoY / CSO).

Map scale for A3
1:135,000
6
Kilometers



iMMAP May 07/2012

"This map is for planing purposes only and should not be used for navigation. iMMAP can't take responsibility for any damage or injure resulting from the use of this map. Administrative boundaries shown on this map do not imply endorsement by iMMAP or any of its partners."

www.immap.org
Contact: jgonzalez@immap.org
MHezam@immap.org