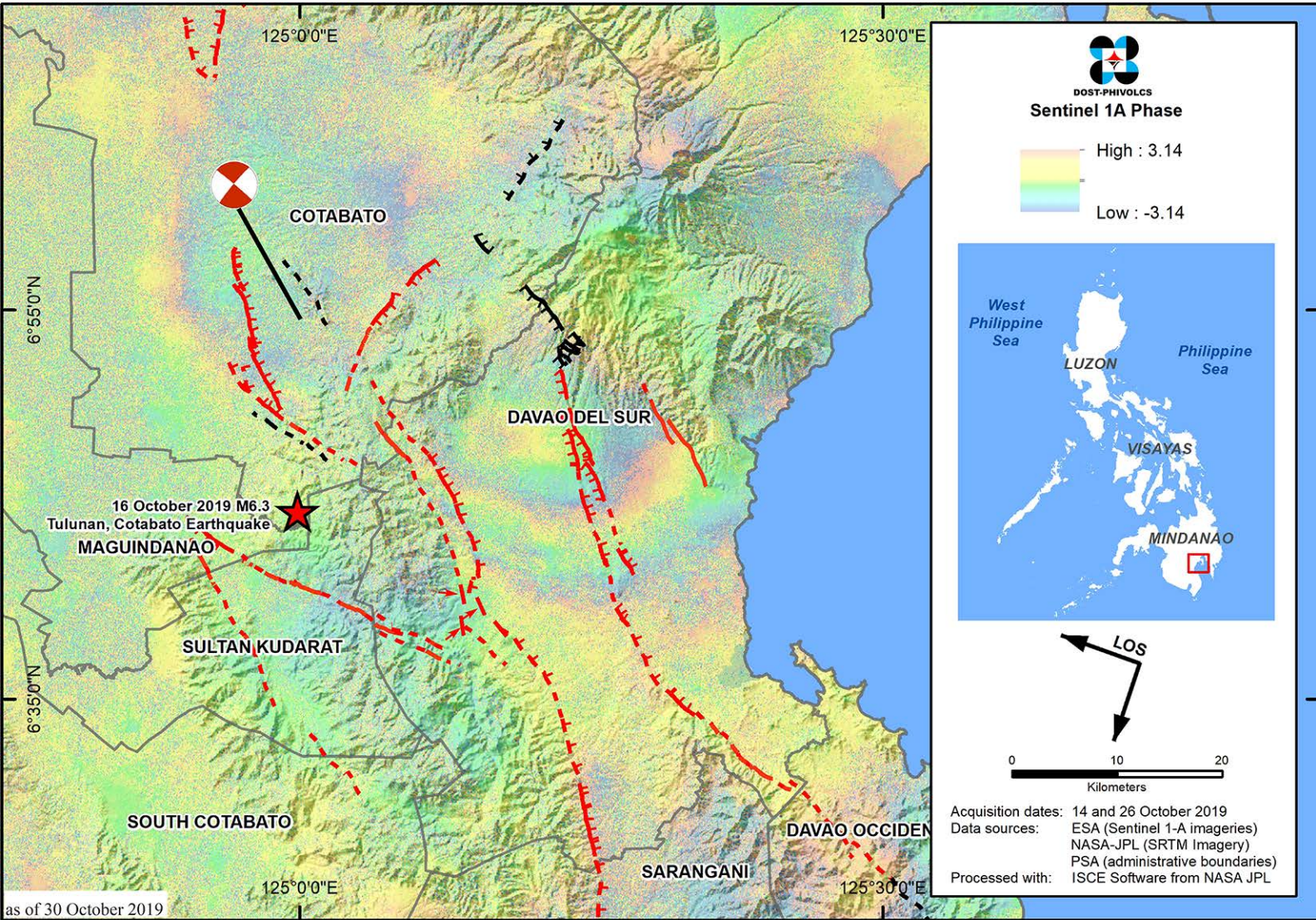


Preliminary DInSAR Phase Map of the 16 October 2019 Ms 6.3 Tulum, Cotabato Earthquake



The DInSAR phase map of the 16 October 2019 Ms 6.3 Tulum, Cotabato earthquake shows a pattern of asymmetric fringes with a discontinuity that is oriented NW-SE near the epicentral area. This discontinuity could indicate surface deformation associated with the fault movement. Based on the number of fringes present on the phase map, a net displacement of approximately 12 cm is observed.