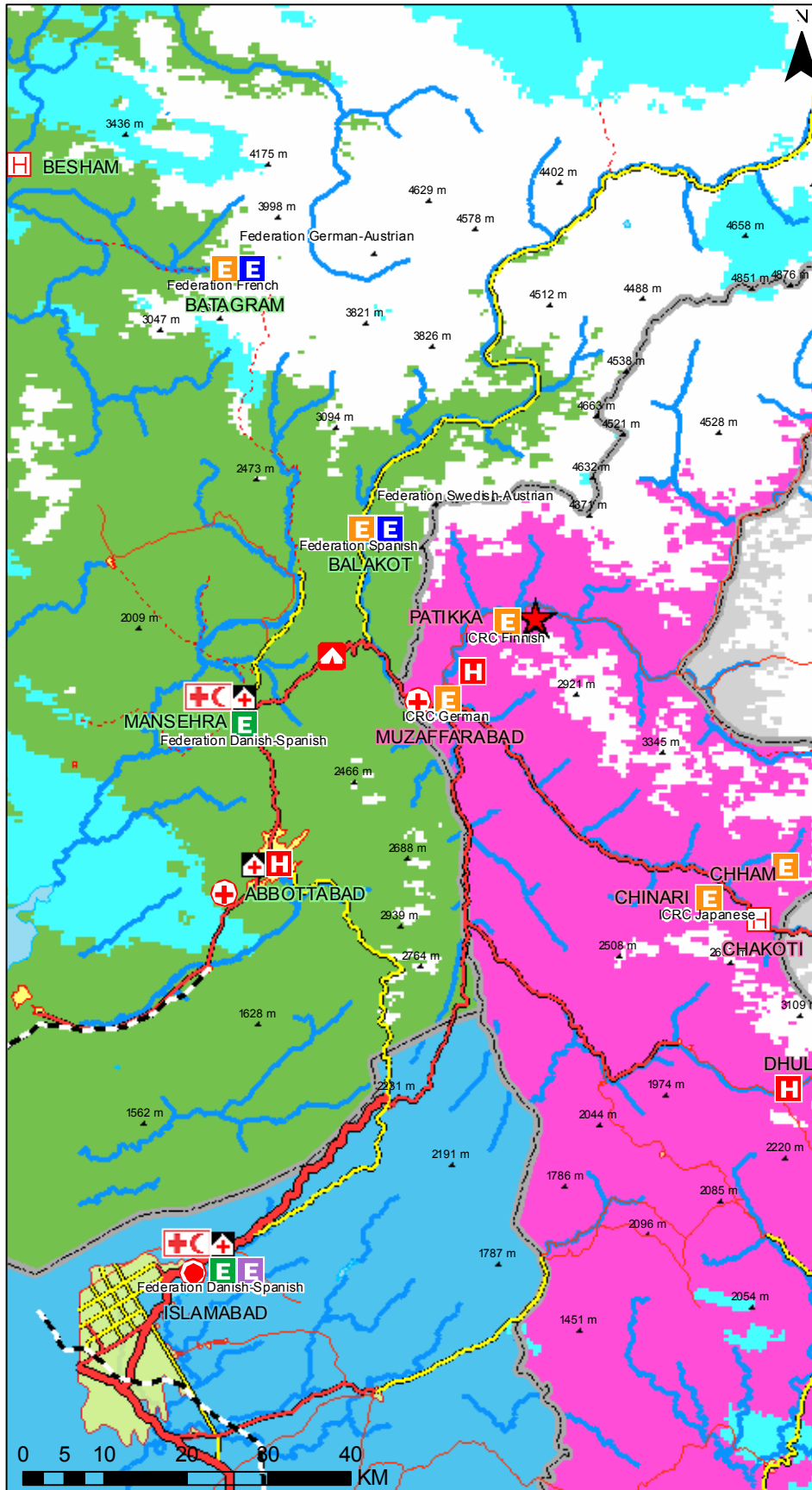




# Pakistan: Earthquake

Situation map  
 Issued 17 February 2006



- Earthquake epicenter
- Federation delegation or hub
- Federation base camp (provided by Danish RC)
- Federation and/or ICRC logistics center
- ICRC delegation
- ICRC sub-delegation
- Hospital
- PRCS and/or Federation Basic Health Unit (BHU)
- Emergency Response Unit (ERU)**
  - Basic Health Care (BHC)
  - IT/Telecom
  - Logistics
  - Water & Sanitation (WATSAN)
- Administrative boundaries
- Provinces**
  - Indian Jammu & Kashmir
  - North-west Frontier
  - Pakistan-administered Kashmir
  - Punjab
- Railroads
- Highway, Hard, All weather
- Main road, Hard, All weather
- Secondary road, Loose, All weather
- Local road, Loose, Dry weather
- Track, Loose, Dry weather

Snow extend (in white) as of February 10, 2006  
 Light blue: clouds

The maps used do not imply the expression of any opinion on the part of the International Federation of Red Cross and Red Crescent Societies or National Societies or the ICRC concerning the legal status of a territory or of its authorities.