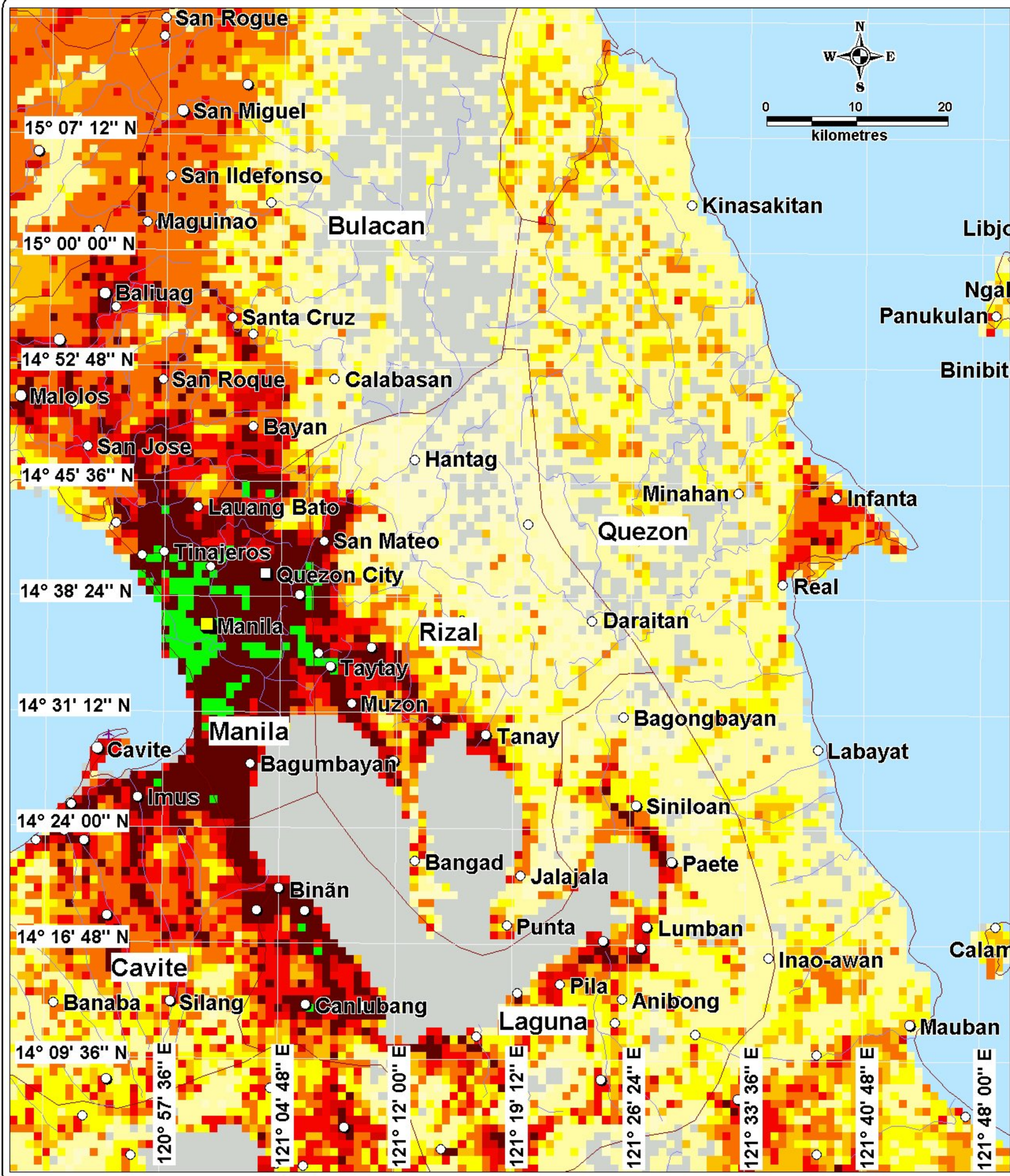


Philippines

Population distribution in crisis area



Population distribution (persons per sq. km)

- Above 25,000
- 5,000 to 25,000
- 2,500 to 5,000
- 500 to 2,500
- 100 to 500
- 50 to 100
- 25 to 50
- 5 to 25
- 2 to 5
- 0 to 2
- Ocean

Source: LandScan 2002

Disaster type: Typhoon ("Winnie")
Disaster date: 30 November 2004
Data source: LandScan 2002
Resolution: 1 km
Datum: WGS84
Projection: UTM Zone 51 North
Map created 1 December 2004.

This map was produced by the UNOSAT service headed by UNITAR and executed by UNOPS. UNOSAT is a UN-Private consortium providing satellite imagery and related geographic information to UN humanitarian and development agencies and their implementing partners.

See www.unosat.org for further information.

The depiction and use of boundaries, geographic names and related data shown here are not warranted to be error free nor do they necessarily imply official endorsement or acceptance by the United Nations.



UNOSAT
 satellite imagery for all
www.unosat.org