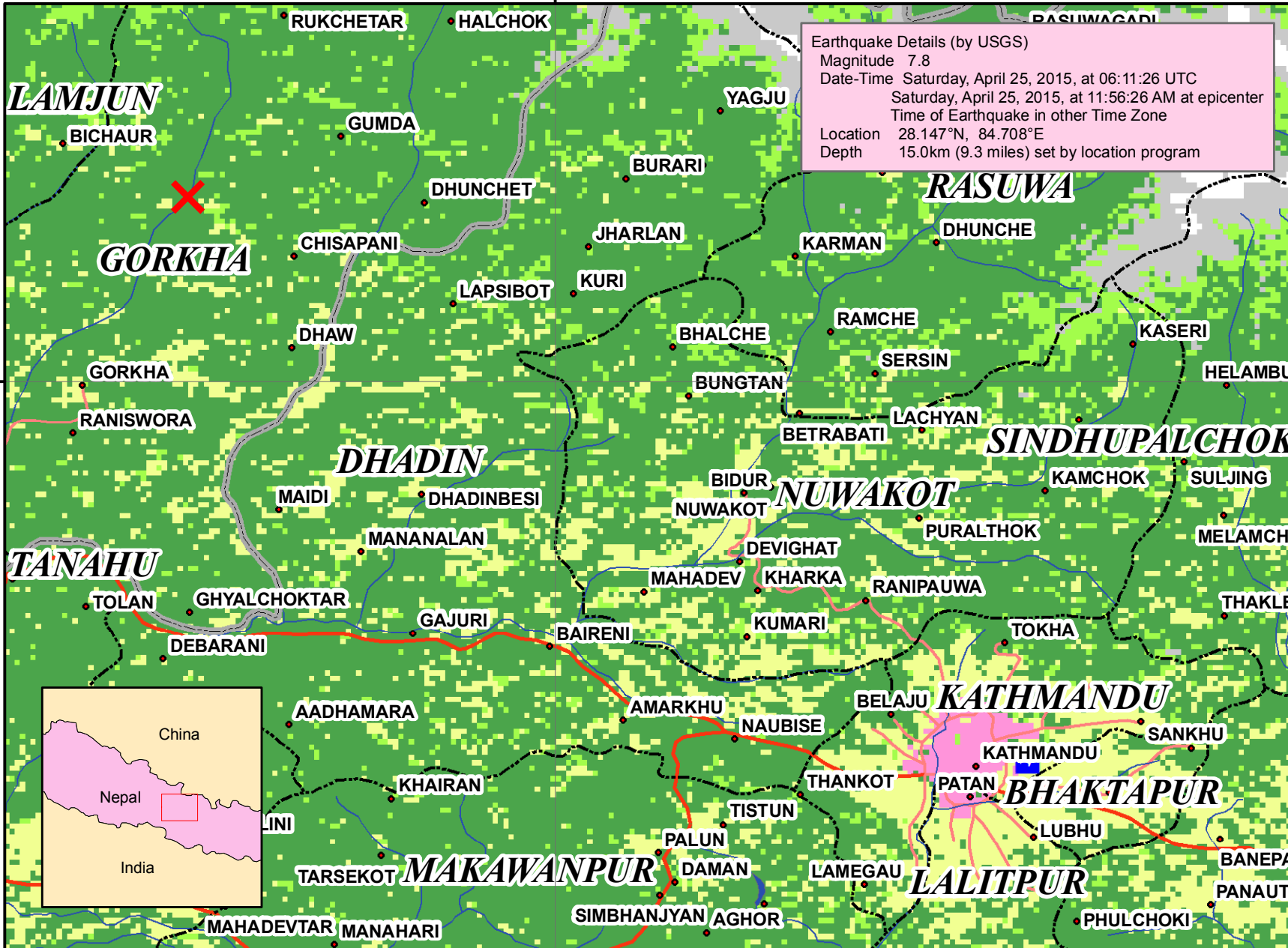


Global Map of central Nepal

GLIDE Number: EQ-2015-000048-NPL
(GLIDE: Global Unique Disaster Identifier)



Earthquake Details (by USGS)
 Magnitude 7.8
 Date-Time Saturday, April 25, 2015, at 06:11:26 UTC
 Saturday, April 25, 2015, at 11:56:26 AM at epicenter
 Time of Earthquake in other Time Zone
 Location 28.147°N, 84.708°E
 Depth 15.0km (9.3 miles) set by location program

Legend

- ✕ Epicenter
- Population**
 - Built-Up-Area (point)
- Transportation**
 - Airport
 - Primary Route
 - Secondary Route
- Boundaries**
 - International
 - Primary Boundary
 - Secondary Boundary
- Drainage**
 - River
 - Inland Water
- Land Cover**
 - Forest
 - Grassland
 - Barren/Sparsely Vegetated Area
 - Agricultural area
 - Wetland
 - Urban
 - Snow/Ice
 - Water Body

Data Source:
 Vector data: Global Map Nepal version 1
 Land Cover: GLCNMO version 2

Scale

 1: 500,000 scale printed in A4 format
 April 27, 2015

