



Population needing emergency assistance from August to December, 2005 By Region

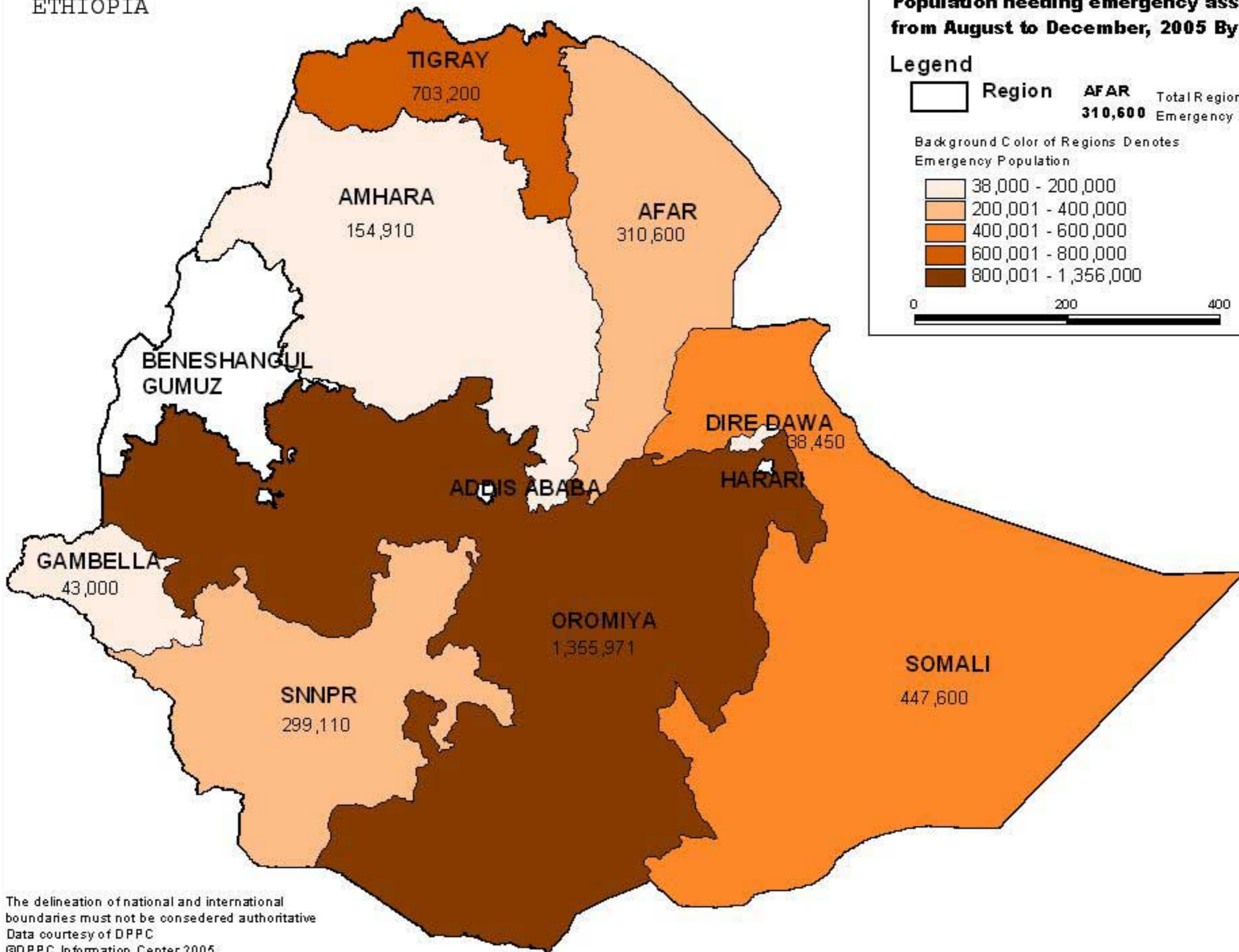
Legend

Region **AFAR** Total Regional Emergency Population **310,600**

Background Color of Regions Denotes Emergency Population

- 38,000 - 200,000
- 200,001 - 400,000
- 400,001 - 600,000
- 600,001 - 800,000
- 800,001 - 1,356,000

0 200 400 Kilometers



The delineation of national and international boundaries must not be considered authoritative
 Data courtesy of DPPC
 ©DPPC Information Center 2005