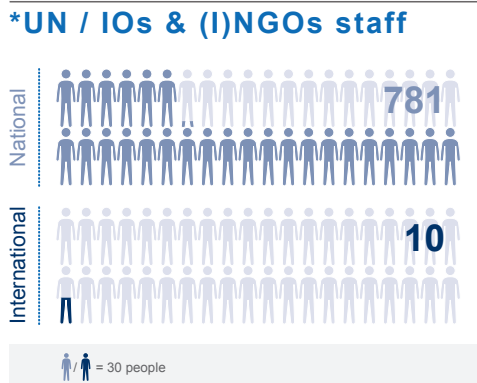
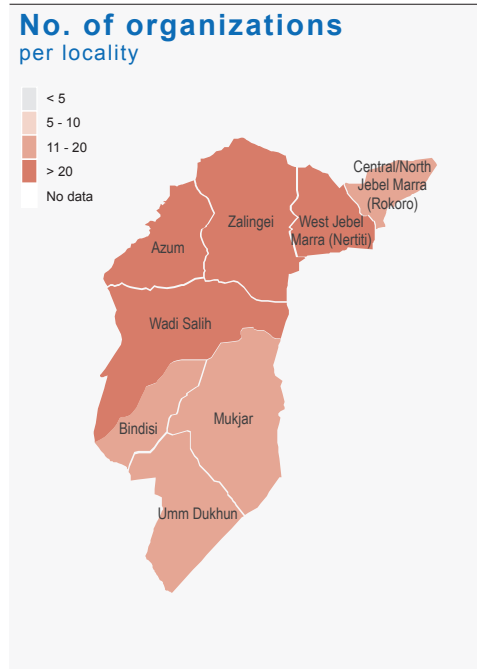


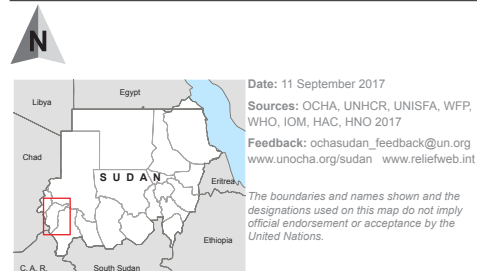
37 ← **11 (UN/IOs)**
10 (INGOs)
16 (NNGOs)

Total number of organizations



- ### Sectors
- Education
 - Emergency Shelter & Non-Food Items
 - Food Security & Livelihoods
 - Health
 - Nutrition
 - Protection
 - Recovery, Return & Reintegration
 - Refugee Multi-Sector
 - Water, Sanitation & Hygiene
 - Others

UN United Nations
 IOs International Organization
 (I)NGO International & National Governmental Organization



Organizations per locality / per sector

No. of organizations per sector: < 5 5 - 10 11 - 20 > 20 No data

Localities	Sectors	Total
AZUM	SC-S, UNICEF, WFP, UNHCR, Almassar, CRS, DDRA, DRC, FAO, HIH, Mubadiroon, NCA, NEF, SC-S, SOHA, UNDP, VSF-G, WFP, SC-S, SRCS, UNFPA, UNHABITAT, UNICEF, WHO, WR, SC-S, UNICEF, WFP, WR, ICRC, SC-S, UNFPA, UNHCR, UNICEF, UNDP, UNHCR, Almassar, NCA, NEF, SC-S, SOHA, TGH/Triangle, UNICEF, WR, DRC, OCHA, WFP	3 1 14 7 4 5 1 1 8 3 24
BINDISI	CRS, UNICEF, WFP, TGH/Triangle, UNHCR, Almassar, CRS, DRC, FAO, PCS, SDO, SRCS, TDO, TGH/Triangle, WFP, IMC, SRCS, UNFPA, UNICEF, WHO, SRCS, UNICEF, ICRC, UNFPA, UNHCR, UNICEF, DRC, PCS, SC-S, TGH/Triangle, UNICEF, UNOPS, OCHA, WFP	3 2 10 5 2 4 - - 6 2 19
CENTRAL/NORTH JEBEL MARRA (ROKORO)	DRC, TGH/Triangle, UNICEF, DRC, UNHCR, DRC, FAO, Labena, SRCS, WFP, IMC, SRCS, UNICEF, CRS, IMC, SEKEAR, UNICEF, DRC, ICRC, UNICEF, UNDP, DRC, IRW, Labena, NEF, TGH/Triangle, UNICEF, WR	3 2 5 3 4 3 1 - 7 - 17
MUKJAR	CRS, TDO, UNICEF, WFP, CRS, UNHCR, Almassar, CRS, FAO, HIH, Mubadiroon, NEF, SDO, SRCS, TDO, TGH/Triangle, WFP, IMC, SRCS, UNFPA, UNHABITAT, UNICEF, WHO, IMC, TDO, UNICEF, WFP, ICRC, UNFPA, UNHCR, UNICEF, UNDP, CRS, UNHCR, IMC, NEF, SRCS, TDO, TGH/Triangle, UNICEF, OCHA, WFP	4 2 11 6 4 4 1 2 6 2 20
UMM DUKHUN	TGH/Triangle, UNICEF, Alfajer, SORC, TGH/Triangle, UNHCR, Alfajer, CRS, DRC, FAO, SDO, SRCS, TDO, TGH/Triangle, WFP, IMC, UNFPA, UNICEF, WHO, Alfajer, IMC, UNICEF, ICRC, UNFPA, UNHCR, UNICEF, UNDP, UNHCR, Alfajer, IMC, NEF, SRCS, TGH/Triangle, UNICEF, OCHA, WFP	2 4 9 4 3 4 1 1 6 2 19
WADI SALIH	Al Ruhama'a, DRC, UNICEF, WFP, UNHCR, Al Ruhama'a, CRS, DRC, FAO, HIH, Mubadiroon, NCA, NEF, PCS, SDO, SOHA, SRCS, TDO, WFP, Al Ruhama'a, IMC, Mubadiroon, SC-S, UNFPA, UNHABITAT, UNICEF, WHO, IMC, Mubadiroon, NCA, SC-S, UNICEF, WFP, ICRC, UNFPA, UNHCR, UNICEF, UNDP, UNHCR, Al Ruhama'a, DRC, NCA, NEF, PCS, SC-S, UNICEF, OCHA, WFP	4 1 14 8 6 4 1 1 7 2 24
WEST JEBEL MARRA (NERTITI)	DRC, IRW, UNICEF, WFP, DRC, SORC, UNHCR, DRC, FAO, HIH, Mubadiroon, NEF, UNDP, VSF-G, WFP, IMC, IRW, NCA, SRCS, UNFPA, UNICEF, WHO, WR, IMC, IRW, UNICEF, WFP, WR, DRC, ICRC, SC-S, UNFPA, UNHCR, UNICEF, UNDP, DRC, IRW, Labena, NCA, NEF, TGH/Triangle, UNICEF, WR, OCHA	4 3 8 8 5 6 1 - 8 1 23
ZALINGEI	Almassar, Areebo, DRC, Mubadiroon, SC-S, UNICEF, WFP, Zakia Center(CBO), NCA, SORC, UNHCR, Almassar, CRS, DRC, FAO, HIH, Labena, Mubadiroon, NCA, NEF, SC-S, SRCS, UNDP, UNOPS, WFP, Zakia Center(CBO), Almassar, IMC, Mubadiroon, NCA, SC-S, UNFPA, UNHABITAT, UNICEF, WHO, Areebo, IMC, Mubadiroon, NCA, SC-S, UNICEF, WFP, DRC, ICRC, SC-S, UNFPA, UNHCR, UNICEF, UNDP, UNHCR, Almassar, NCA, NEF, SC-S, TGH/Triangle, UNICEF, UNOPS, DRC, OCHA, UNOPS, WFP	8 3 15 9 7 6 1 1 7 4 26

