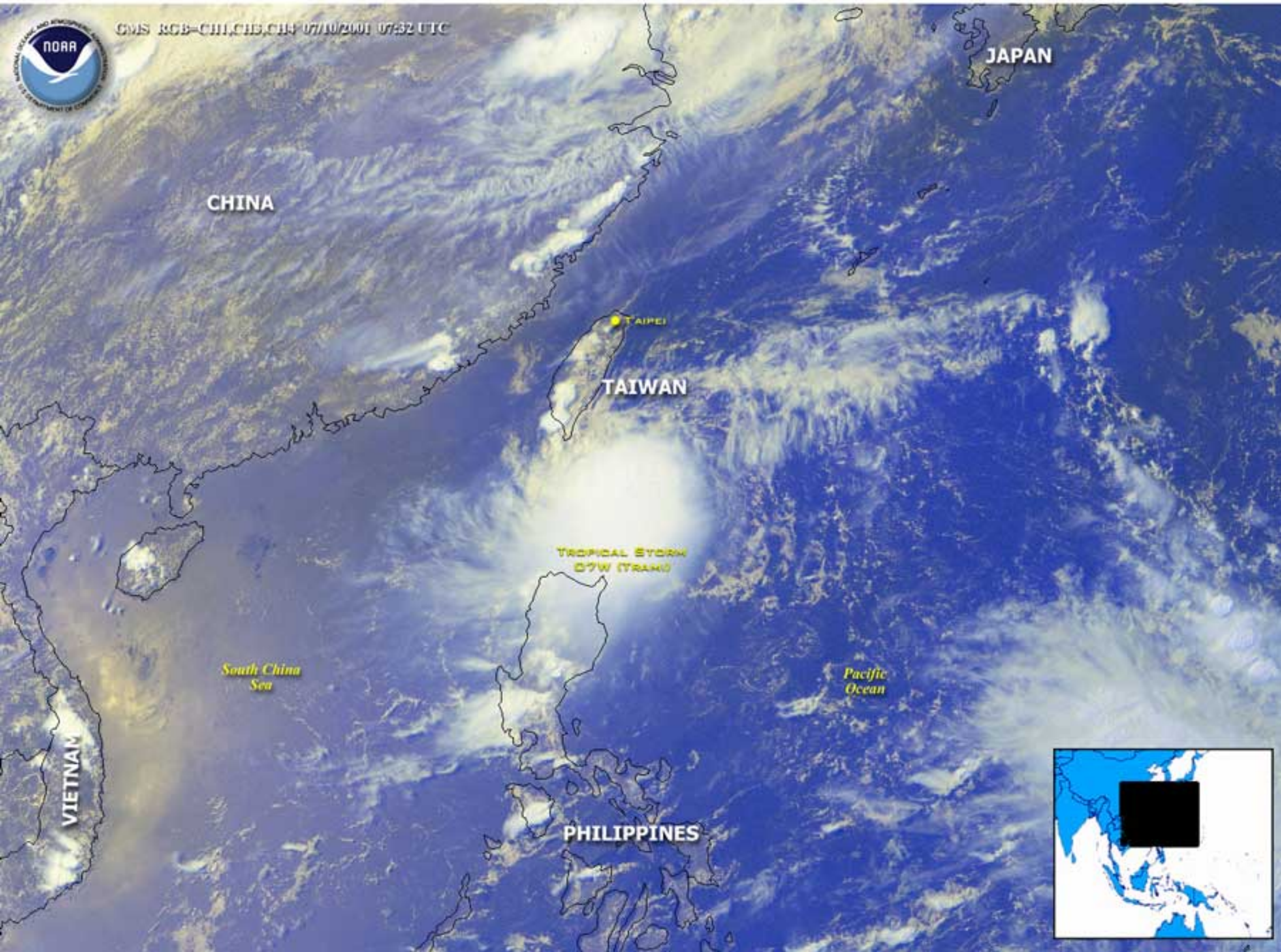


Tropical Storm 07W (Trami) was located 300 miles south-southeast of Taipei, Taiwan near 20.7N and 123.4E at 06:00 UTC. Trami has been moving northwestward at 7 knots with maximum sustained winds at 35 knots, gusts to 45 knots.

CREDIT: NOAA



GMS RGB-CHI,CH3,CH4 07/07/2001 07:32 UTC

CHINA

JAPAN

TAIPEI

TAIWAN

TROPICAL STORM  
07W (TRAMI)

South China  
Sea

Pacific  
Ocean

VIETNAM

PHILIPPINES

