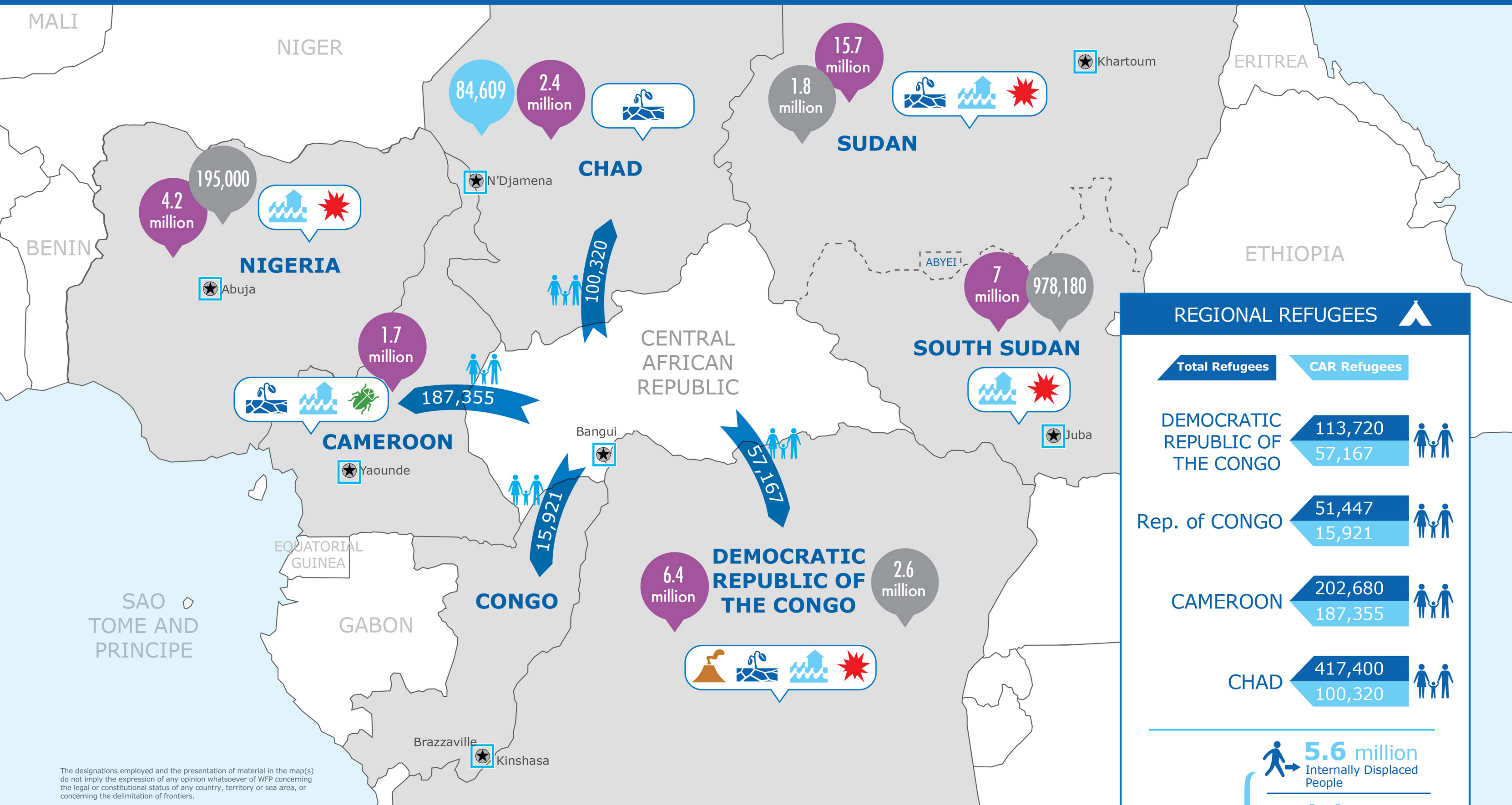


Regional Impact of the Central African Republic (C.A.R.) Crisis

Refugees fleeing from violence - a complex regional emergency



The designations employed and the presentation of material in the map(s) do not imply the expression of any opinion whatsoever of WFP concerning the legal or constitutional status of any country, territory or sea area, or concerning the delimitation of frontiers.

REGIONAL REFUGEES

Country	Total Refugees	CAR Refugees
DEMOCRATIC REPUBLIC OF THE CONGO	113,720	57,167
Rep. of CONGO	51,447	15,921
CAMEROON	202,680	187,355
CHAD	417,400	100,320

TOTAL REGION

- 5.6 million Internally Displaced People
- 1.1 million Refugees
- 360,000 from C.A.R.
- 37.5 million At risk of Food Insecurity

- Conflict
- Flood
- Drought
- Volcano
- Locust
- National Capital
- Country Office
- International Boundaries
- Undetermined Boundaries
- Abyei Region



Data Sources: OCHA, UNHCR, IOM, IPCInfo, WFP

Date Created: 16 May 2014 (figures as of 10 May)
 Contact: wfp.opscen@wfp.org
 Website: www.wfp.org