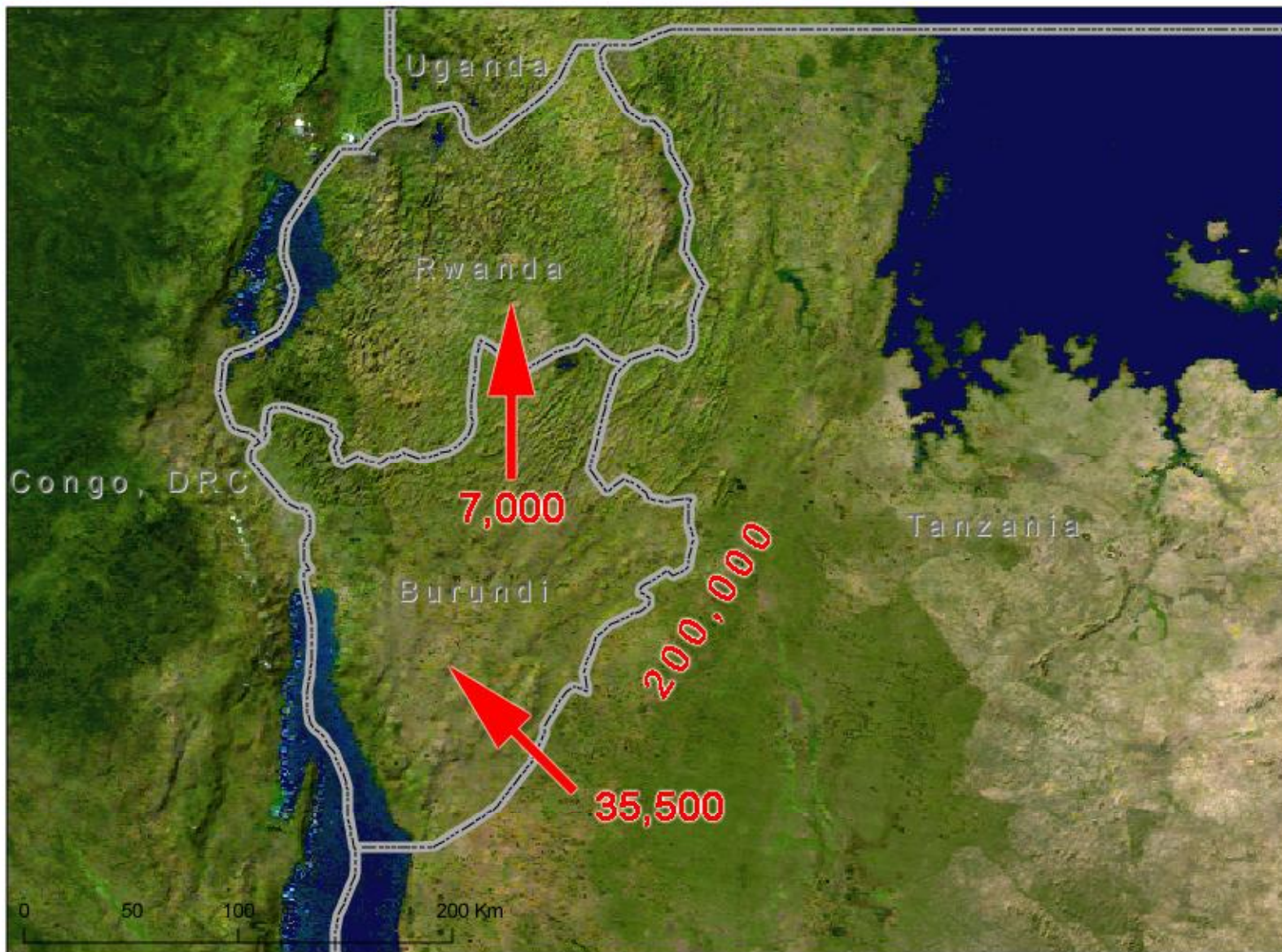




Burundi: Refugee and IDP returnees



The Burundi Red Cross, assisted by the Federation, will identify strategies which strengthen community infrastructures and community organizations in order to deliver basic services to vulnerable people (local and returnees). This strategy will link humanitarian assistance to the recovery phase. The national society and the Federation will prepare for a possible sudden and massive influx of returnees and to implement vulnerability reduction strategies while strengthening villages' basic capacities for both local vulnerable people and returnees.

The first phase in this strategy is designed to cope with a sudden and massive influx of returnees into Burundi, and if this happens to be in a position to quickly deploy a team to the field in order to assess the possible impact of this population movement, to recommend strategies and priority interventions, and to develop strategic partnerships inside and outside the Movement.