

BURKINA FASO, MALI & WESTERN NIGER

Humanitarian Snapshot

As of 29 November 2021



The humanitarian context in the cross-border area between Burkina Faso, Mali, and Niger continues to deteriorate. Security trends showcase a continuous increase in the number of incidents, with 390 incidents in October alone, the highest number of incidents per month this year, causing the killing of 493 people. In Burkina Faso, on 14 November, an attack in Soum Province in the north killed 53 persons including four civilians¹ in one of the deadliest attacks in the country. Violence has severe impacts on fragile livelihoods and people's capacity to provide for themselves and is straining already weak basic social services. More people are fleeing their homes seeking safety in nearby fields or villages, sometimes multiple times. 2 million people are internally displaced in Burkina Faso, Mali, and Niger, and 132,000 are refugees.

In Burkina Faso, the most affected Sahel and Central-North regions alone account for almost 1.4 million IDPs. Large-scale displacement has a strong impact on scarce natural resources, with negative consequences on both the displaced population and host communities, reinforcing the risk of jeopardizing social cohesion. 4.3 million people experience acute food insecurity and 10.8 million people are in need for humanitarian support, with 8.3 million people targeted with assistance. However, so far only 40 per cent of the required funds for the humanitarian response have been received.

INSECURITY

390 SECURITY INCIDENTS¹ **493** PEOPLE KILLED¹

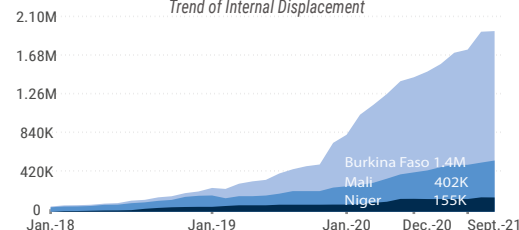
Trend of Security Incidents



DISPLACEMENT

2.0M INTERNALLY DISPLACED PERSONS (IDPs)² **132K** REFUGEES²

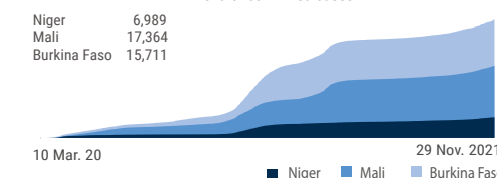
Trend of Internal Displacement



COVID-19 Entire country

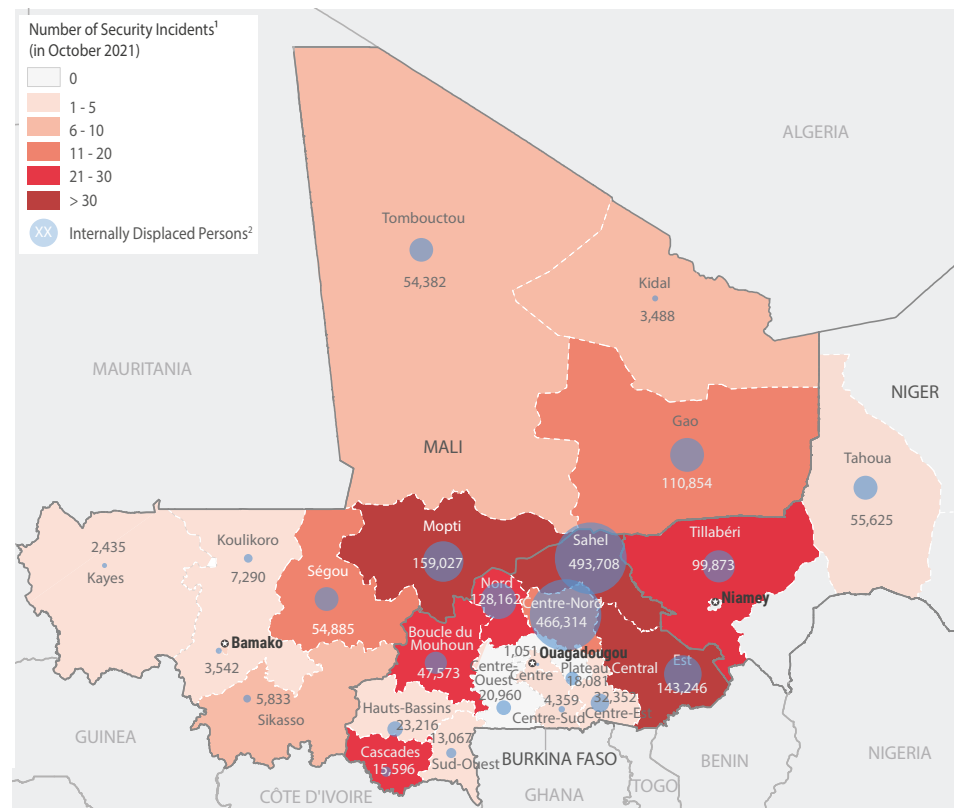
40,064 CONFIRMED CASES³ **1,145** DEATHS³

Trend of confirmed cases

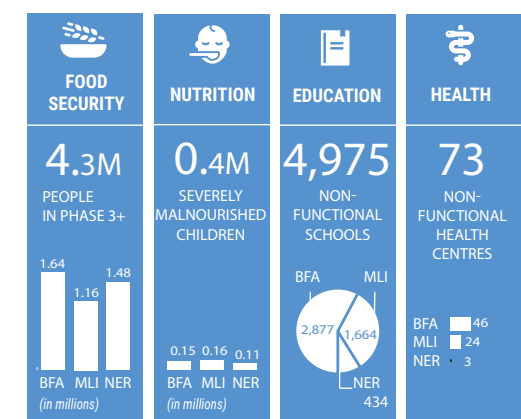


HUMANITARIAN SITUATION PER REGION

10.8M PEOPLE IN NEED **8.3M** PEOPLE TARGETED

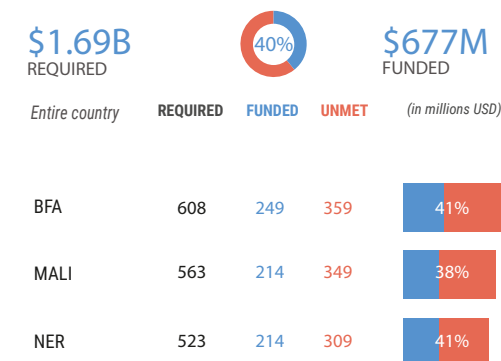


HUMANITARIAN SITUATION PER SECTOR



BFA = Burkina Faso, MLI = Mali, NER = Niger

FUNDING - 2021 HUMANITARIAN RESPONSE PLANS⁴



¹ in October 2021 ² IDPs as of September 2021 Refugees as of September for Niger, October for Mali, Burkina Faso ³ as of 29 November 2021 ⁴ FTS as of 29 November 2021 ⁵ ACLED

The boundaries and names shown and the designations used on this map do not imply official endorsement or acceptance by the United Nations.

Sources: ACLED, Cadre Harmonisé, November 2021 exercise - Current situation (Sept-Dec 2021) ACLED, CMP, CONASUR, DTM, FTS, Governments, OCHA Country Offices, Ministry of Education, UNHCR, UNICEF, HeRAMS Contact: ocharowca@un.org www.unocha.org www.reliefweb.int