

Flash Appeal at a Glance

PEOPLE IN NEED

4.5M

OPERATIONAL PRIORITY 1 **2.5M**

OPERATIONAL PRIORITY 2 **2.0M**

PEOPLE TARGETED

2.6M

OPERATIONAL PRIORITY 1 **1.6M**

OPERATIONAL PRIORITY 2 **1M**

TOTAL REQUIREMENTS OCT 2021 - DEC 2022 (US\$)

\$359M

OCT 2021 - DEC 2021 **\$69M**

JAN 2022 - DEC 2022 **\$290M**

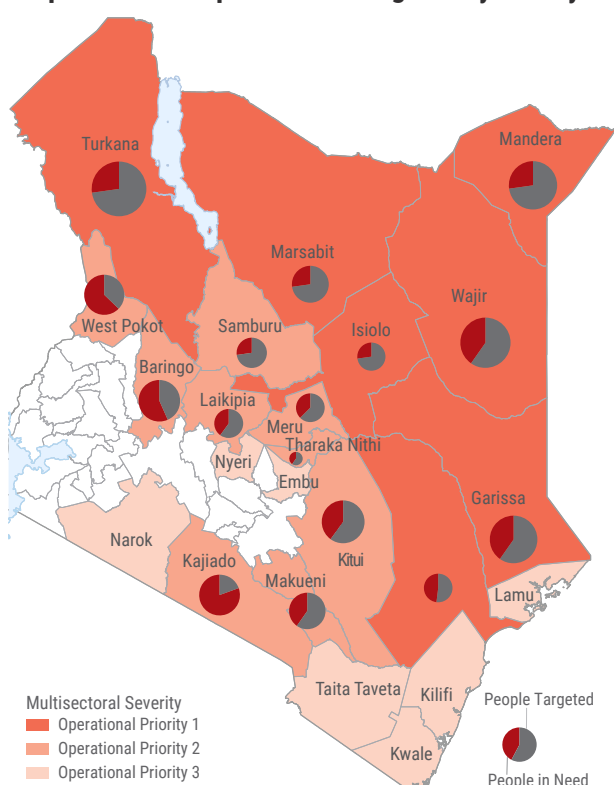
REQUIREMENTS JAN - DEC 2022 (US\$)

\$290M

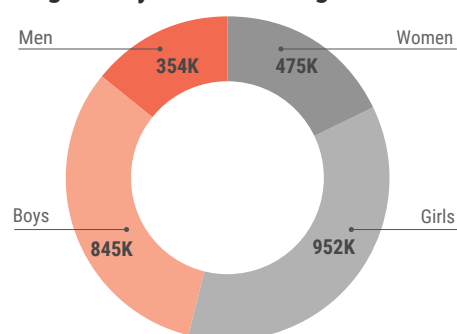
OPERATIONAL PRIORITY 1 **\$226M**

OPERATIONAL PRIORITY 2 **\$64M**

Proportion of People in Need Targeted by County



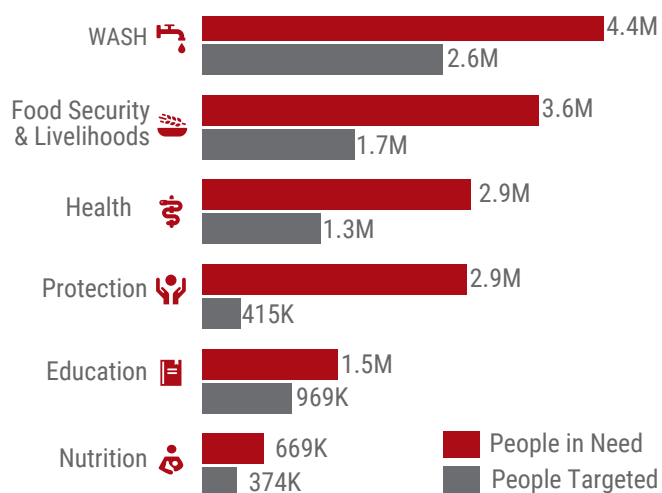
People Targeted By Gender and Age



Operational Partners by Type



People in Need and Targets by Sector



Requirements by Sector (US\$)

