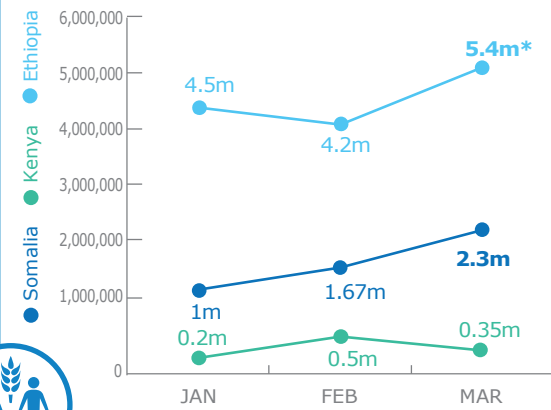




PEOPLE ASSISTED



*final consolidation of figures is still ongoing

OPERATIONAL PROFILE



RESPONSE ACTIVITIES

- General Food Distributions: Somalia, Ethiopia
- Cash-Based Transfers: Somalia, Kenya, Ethiopia
- Food Assistance for Assets: Kenya**, Ethiopia
- Nutrition: Somalia, Kenya, Ethiopia
- School Meals: Somalia, Kenya, Ethiopia
- Capacity-Building: Kenya, Ethiopia

**WFP does not provide FFA assistance during the post-harvest months.

FUNDING



NET FUNDING REQUIREMENTS

May - October 2017

US\$719.3m
Net Funding Requirements

Somalia US\$290.6m | Kenya US\$30.2m | Ethiopia US\$398.5m*

Note: Includes all Protracted Relief & Recovery Operations, Country Programme and Special Operation for the drought response across Ethiopia, Kenya and Somalia.
*Includes WFP TSF MAM, PSNP, Refugee and the WFP-GoE Relief requirements

Source: WFP, 19 April 2017

2017 HUMANITARIAN RESPONSE PLANS & CLUSTER REQUIREMENTS



SOMALIA HUMANITARIAN RESPONSE PLAN 2017

FOOD SECURITY US\$713m | NUTRITION US\$276m | LOGISTICS US\$15.3m | OTHERS US\$505m



TOTAL APPEAL US\$1.5 billion

KENYA FLASH APPEAL 2017

FOOD SECURITY US\$39.3m | NUTRITION US\$43.2m | OTHERS US\$83.2m



TOTAL APPEAL US\$165.7 million

ETHIOPIA HUMANITARIAN REQUIREMENTS DOCUMENT 2017

FOOD SECURITY US\$598m | NUTRITION US\$105.6m | OTHERS US\$244.4m

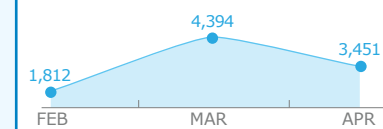


TOTAL APPEAL US\$948 million

UN Humanitarian Air Service (UNHAS)

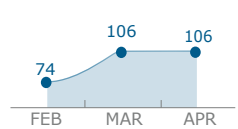
SOMALIA AND KENYA

Passengers Transported



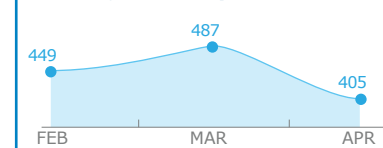
Source: FTS/WFP Clusters, 19 April 2017

Organizations Supported



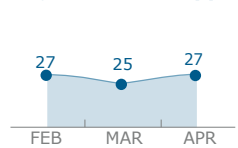
ETHIOPIA

Passengers Transported



Source: FTS/WFP Clusters, 19 April 2017

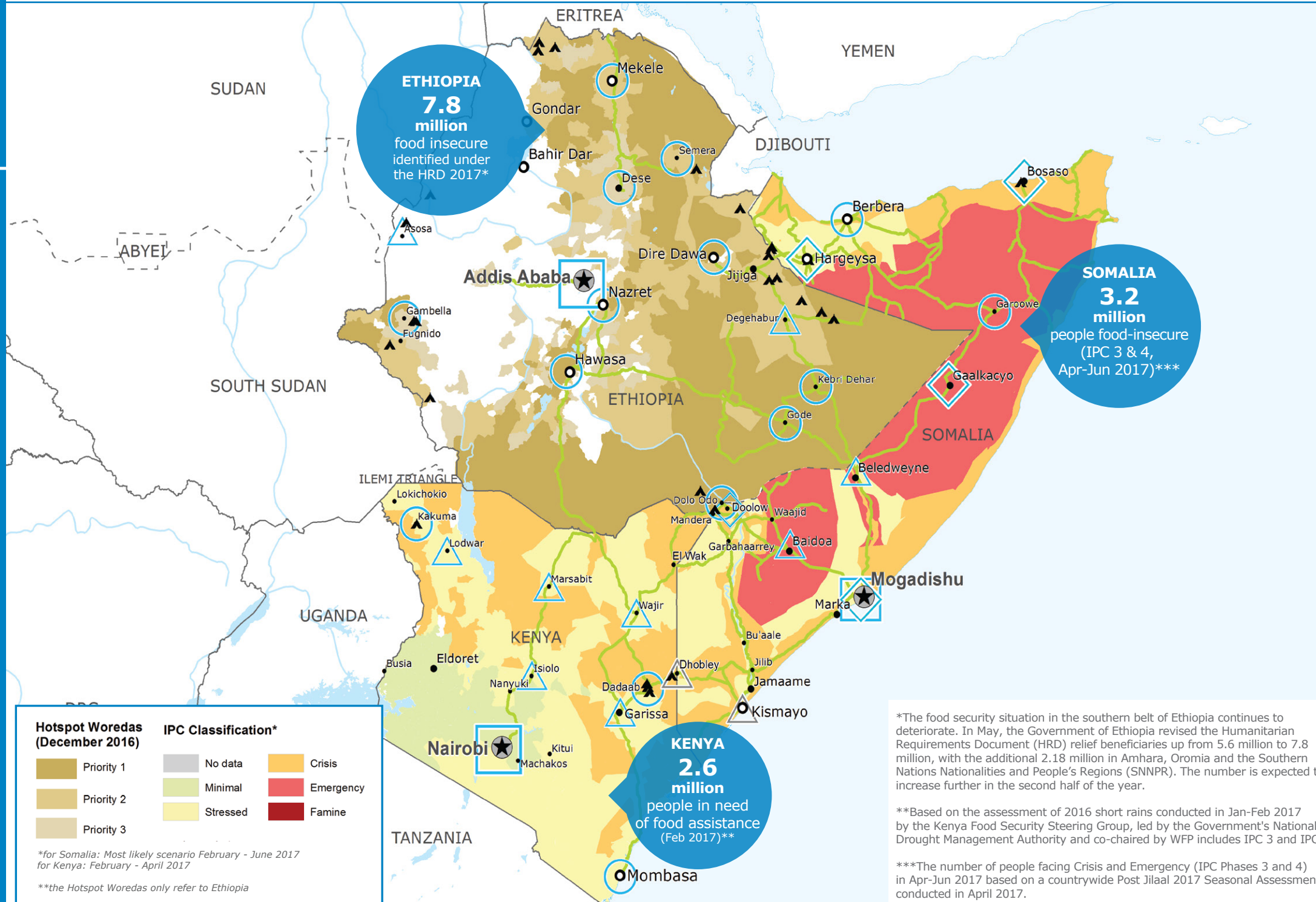
Organizations Supported



WFP LEVEL 2 EMERGENCY SINCE 06 FEBRUARY 2017

For more information, see the SITUATION REPORT and COUNTRY BRIEF www.wfp.org

Produced by the WFP Operations Centre (OPSCEN) jointly with Country Offices and Regional Bureau Nairobi



*The food security situation in the southern belt of Ethiopia continues to deteriorate. In May, the Government of Ethiopia revised the Humanitarian Requirements Document (HRD) relief beneficiaries up from 5.6 million to 7.8 million, with the additional 2.18 million in Amhara, Oromia and the Southern Nations Nationalities and People's Regions (SNNPR). The number is expected to increase further in the second half of the year.

**Based on the assessment of 2016 short rains conducted in Jan-Feb 2017 by the Kenya Food Security Steering Group, led by the Government's National Drought Management Authority and co-chaired by WFP includes IPC 3 and IPC 4

***The number of people facing Crisis and Emergency (IPC Phases 3 and 4) in Apr-Jun 2017 based on a countrywide Post Jilal 2017 Seasonal Assessment conducted in April 2017.

- Country Office (Square)
- Sub Office (Circle)
- National Capital (Star)
- Road Supply Route (Line)
- Field Office (Triangle)
- Major Town (Circle)
- Refugee Camp (Triangle)
- Area Office (Diamond)
- Presence Office (Triangle)
- Intermediate Town (Circle)
- International Boundary (Dashed Line)
- Small Town (Circle)
- Undetermined Boundary (Dotted Line)

Sources: WFP, UNGIWG, GAUL, GLCSC, UNHCR
The designations employed and the presentation of material in the map(s) do not imply the expression of any opinion on the part of WFP concerning the legal or constitutional status of any country, territory, city or sea, or concerning the delimitation of its frontiers or boundaries. © World Food Programme 2017

This dashboard is based on best available information at the time of production. Future updates may vary as new information becomes available.