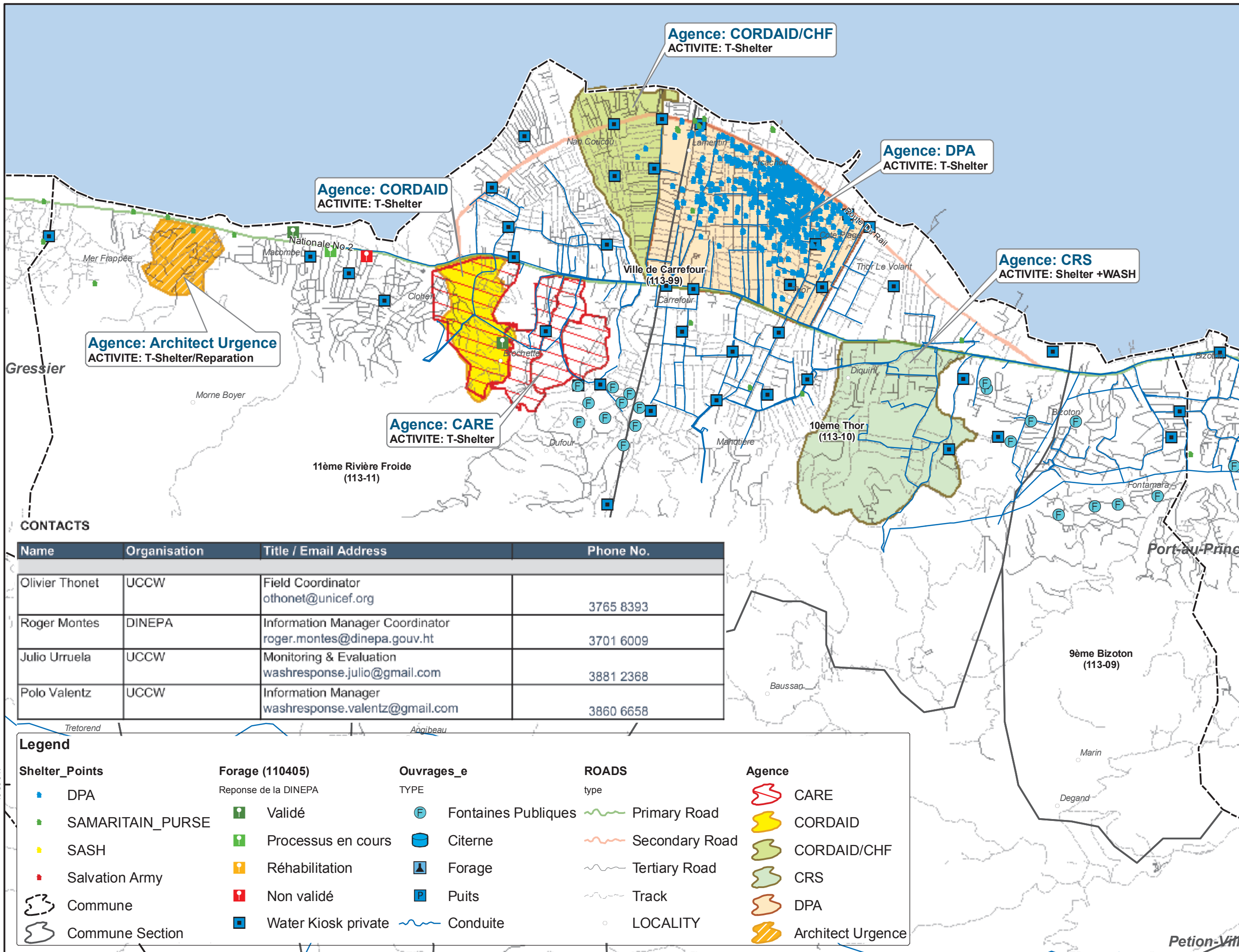




## Ouest Department (Commune Carrefour)

### WASH SHELTER Base Map

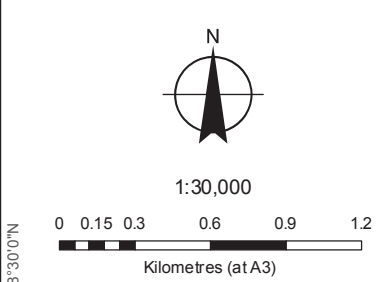
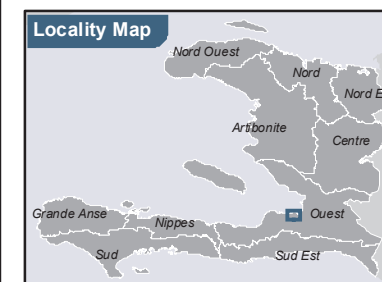


#### CONTACTS

Name	Organisation	Title / Email Address	Phone No.
Olivier Thonet	UCCW	Field Coordinator othonet@unicef.org	3765 8393
Roger Montes	DINEPA	Information Manager Coordinator roger.montes@dinepa.gouv.ht	3701 6009
Julio Urruela	UCCW	Monitoring & Evaluation washresponse.julio@gmail.com	3881 2368
Polo Valentz	UCCW	Information Manager washresponse.valentz@gmail.com	3860 6658

#### Legend

<b>Shelter_Points</b> <ul style="list-style-type: none"> <li><span style="color: blue;">■</span> DPA</li> <li><span style="color: green;">■</span> SAMARITAIN_PURSE</li> <li><span style="color: yellow;">■</span> SASH</li> <li><span style="color: red;">■</span> Salvation Army</li> <li> Commune</li> <li> Commune Section</li> </ul>	<b>Forage (110405)</b> Reponse de la DINEPA <ul style="list-style-type: none"> <li> Validé</li> <li> Processus en cours</li> <li> Réhabilitation</li> <li> Non validé</li> <li> Water Kiosk private</li> </ul>	<b>Ouvrages_e</b> TYPE <ul style="list-style-type: none"> <li> Fontaines Publiques</li> <li> Citerne</li> <li> Forage</li> <li> Puits</li> <li> Conduite</li> </ul>	<b>ROADS</b> type <ul style="list-style-type: none"> <li> Primary Road</li> <li> Secondary Road</li> <li> Tertiary Road</li> <li> Track</li> <li> LOCALITY</li> </ul>	<b>Agence</b> <ul style="list-style-type: none"> <li> CARE</li> <li> CORDAID</li> <li> CORDAID/CHF</li> <li> CRS</li> <li> DPA</li> <li> Architect Urgence</li> </ul>
--	--	---	---	--



Map Projection: Transverse Mercator  
Horizontal Datum: GCS WGS 84  
Units: Degree

Data source: Custodian, Name/Title, Version/Date.  
Created by: POLO Valentz / Roger Montes

Project	WASH SHELTER
Revision	A
Date	06/04/2011