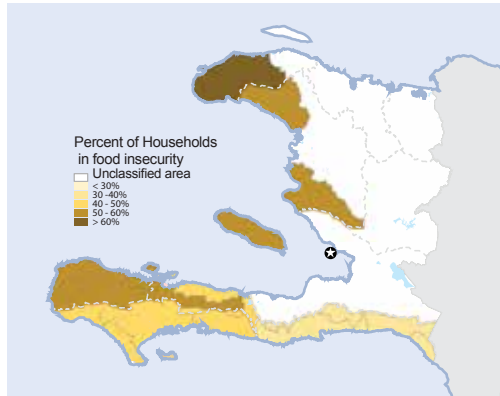


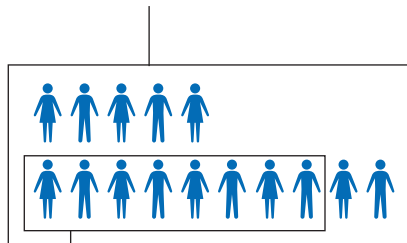


The humanitarian context in Haiti remains challenging as the country continues to be affected by a convergence of humanitarian crises further aggravated by Hurricane Matthew and which has severely impacted the pre-existing humanitarian situation. Despite immediate humanitarian response provided so far, post Hurricane Matthew's humanitarian needs are still high with an estimated 1.4 million people in need of humanitarian assistance. Additionally, 1.5 million vulnerable Haitians are currently food insecure and 280 K highly food insecure and in need of urgent food assistance. Cholera and the bi-national crisis continue also to be humanitarian threats to the country with respectively 1,856 cholera cases reported in January 2017 and 175,578 returnees registered from the Dominican Republic as of 2 March 2017.

FOOD SECURITY & MALNUTRITION



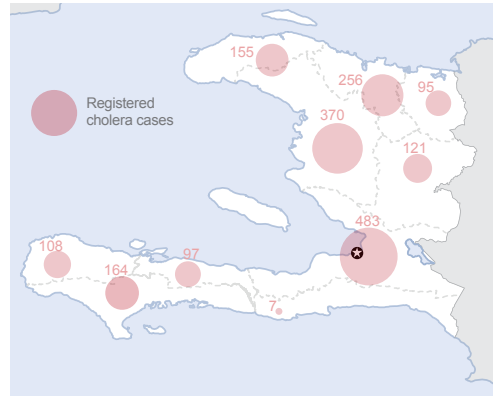
1.5 MILLION
PEOPLE ARE FOOD INSECURE



280k
PEOPLE ARE HIGHLY FOOD INSECURE

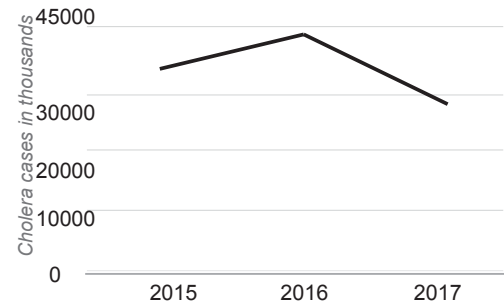
14k children in need of immediate therapeutic feeding
31k children in need of supplemental feeding
45k children with Global Acute Malnutrition

CHOLERA EPIDEMIC



1,856 CHOLERA CASES (JANUARY 2017)

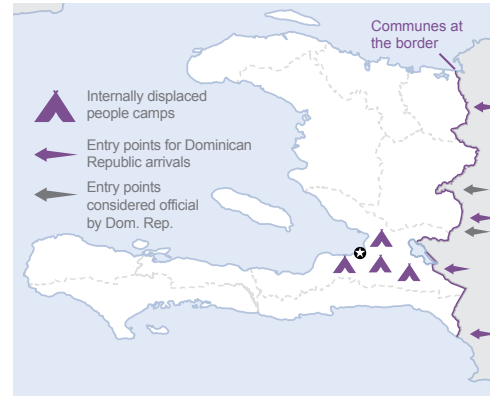
30,000 PEOPLE WHO COULD CONTRACT CHOLERA IN 2017



28 DEATHS

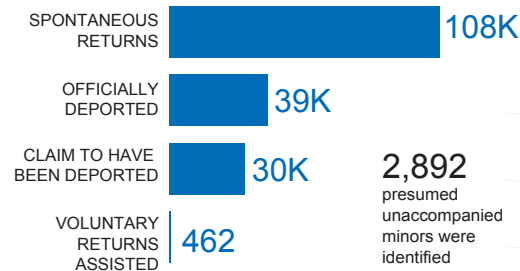
1.50% LETHALITY RATE

BINATIONAL SITUATION and IDPs



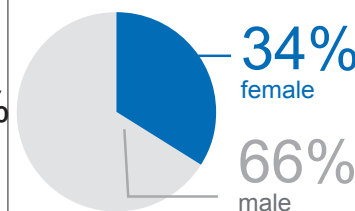
46,691 DISPLACED PEOPLE CONTINUE TO LIVE IN 31 CAMPS

177,304 RETURNES INTERVIEWED FROM DOMINICAN REPUBLIC (as of 9 March 2017)

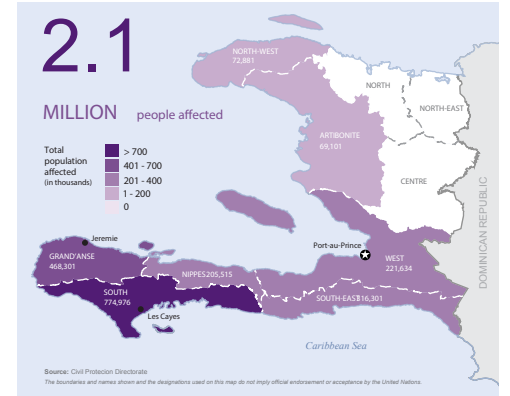


2,892 presumed unaccompanied minors were identified

11,875 people declared having been registered in the PNRE



NATURAL DISASTERS



2.1 MILLION PEOPLE AFFECTED BY HURRICANE MATTHEW

1.4 MILLION PEOPLE IN NEED OF HUMANITARIAN ASSISTANCE

People in need by sector due to Hurricane Matthew

