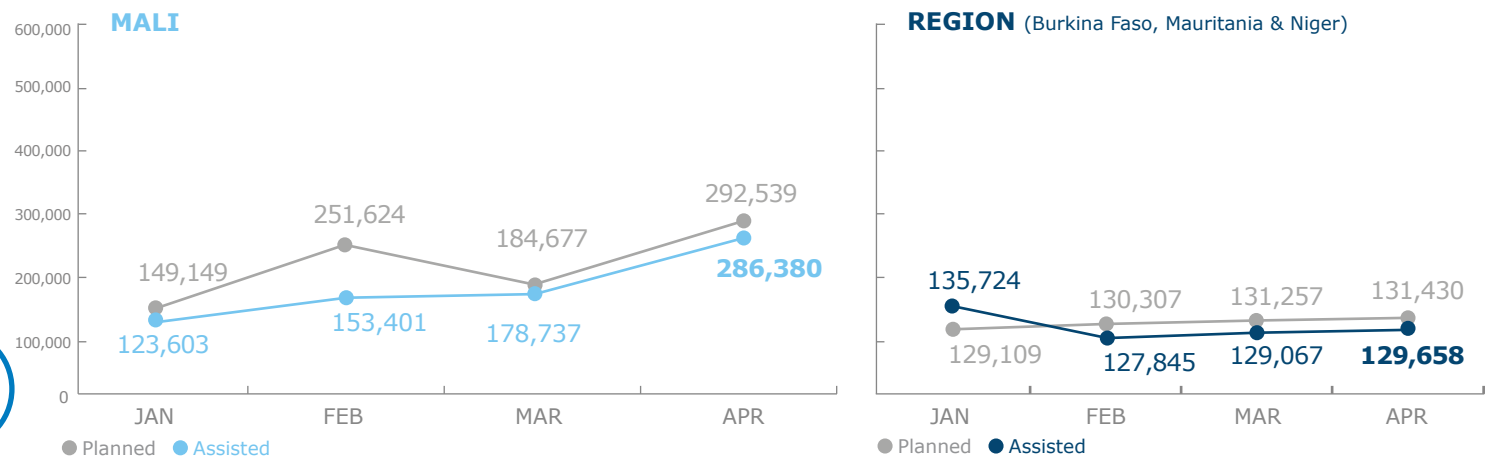
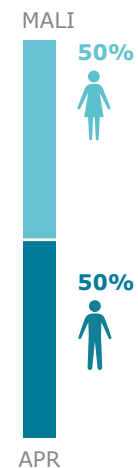


PEOPLE ASSISTED



OPERATIONAL PROFILE



FUNDING

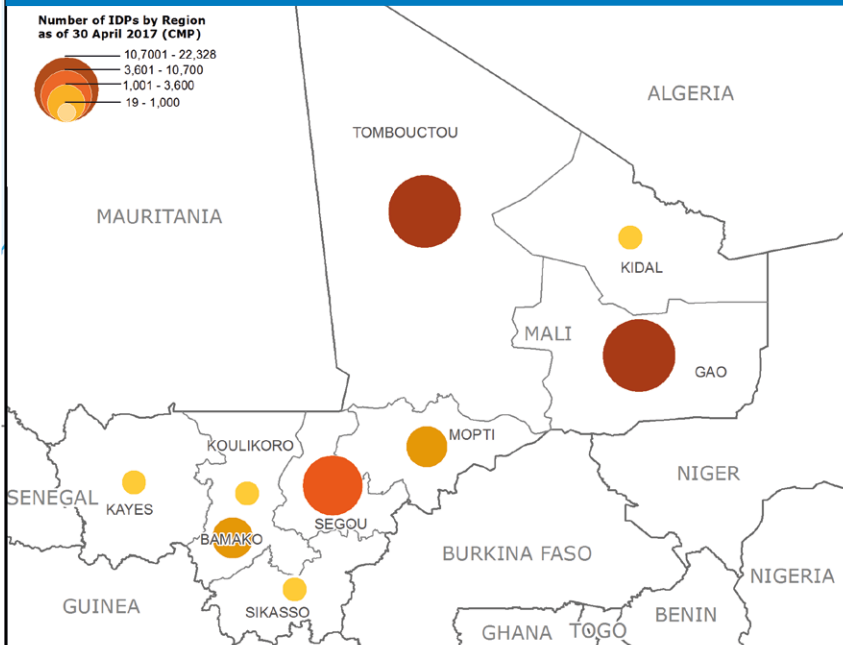
Mali Protracted Relief & Recovery Operation 200719

May – October 2017

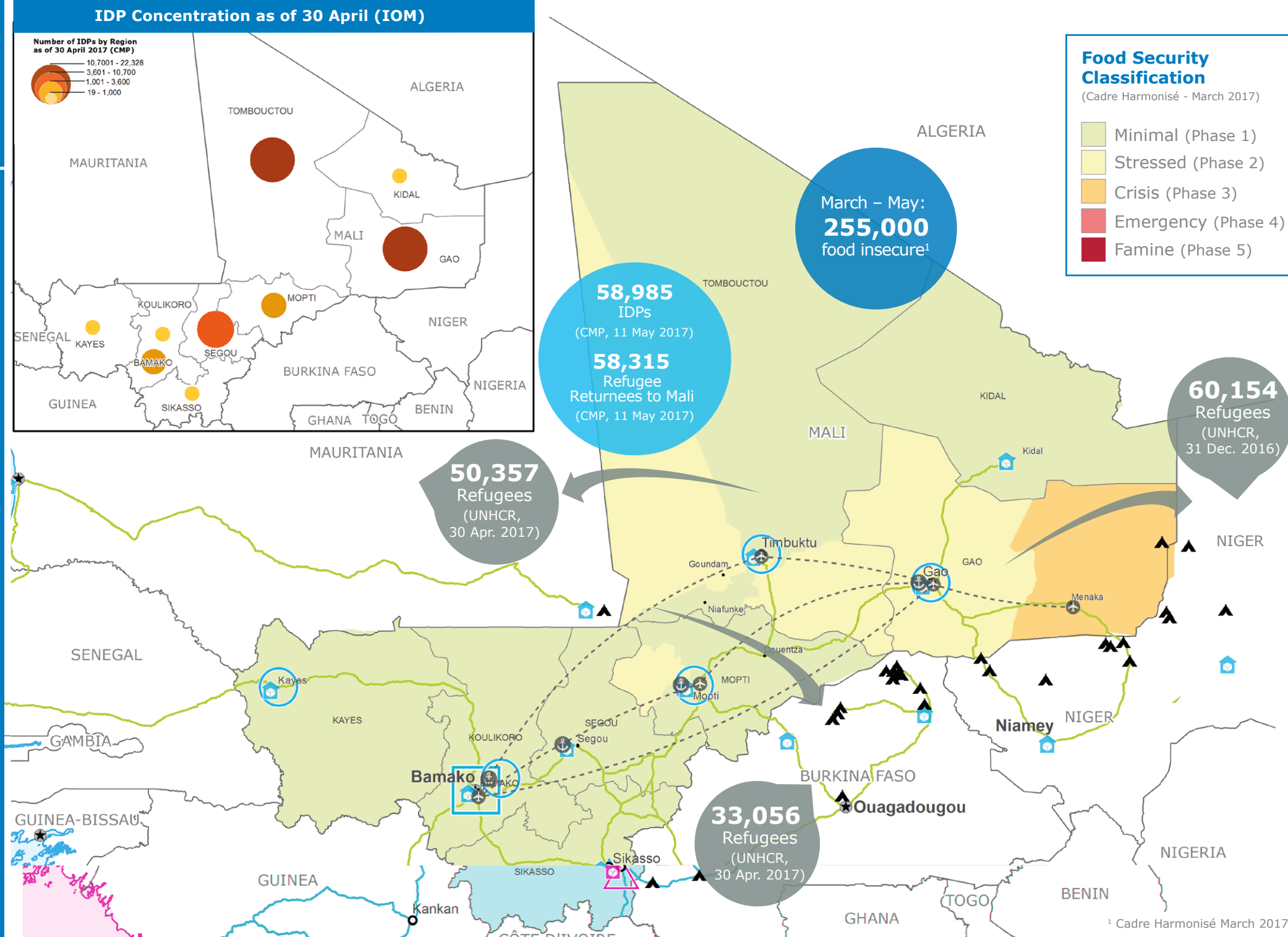
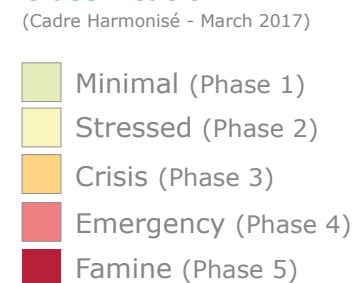
**US\$35.5m** Net Funding Requirements

Source: WFP, 18 May 2017

IDP Concentration as of 30 April (IOM)



Food Security Classification



2017 PROJECT RESOURCES

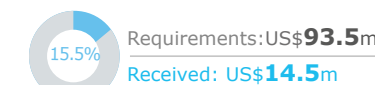
Special Operation UN Humanitarian Air Service (UNHAS) 201047



Source: WFP, 09 May 2017

WFP LED & CO-LED SECTORS

Food Security and Livelihoods Sector

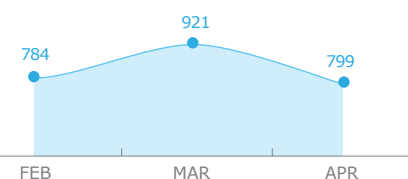


Number of Partners

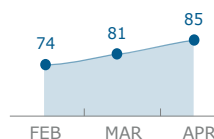
**98** (2017)

UN Humanitarian Air Service (UNHAS)

Passengers Transported



Organizations Supported



Source: WFP, 18 May 2017

WFP LEVEL 2 EMERGENCY SINCE 12 JANUARY 2012

For more information, see the **SITUATION REPORT** and **COUNTRY BRIEF** [www.wfp.org/countries/mali](http://www.wfp.org/countries/mali)

**2A** RELIEF OPERATION 200719 <http://documents.wfp.org/stellent/groups/public/documents/ep/WFP284303.pdf>

Produced by the WFP **Operations Centre (OPSCEN)** jointly with Country Office and Regional Bureau Dakar

This dashboard is based on best available information at the time of production. Future updates may vary as new information becomes available.