

# UGANDA: South Sudan Refugee Situation Infographic



Bi-Weekly Update: 20 April 2017

Sector Indicators - Bidibidi \*

## Population per New Settlement

Average Daily Arrival (from 7 July 2016)

**2,159**

Palorinya Settlement  
**148,381**

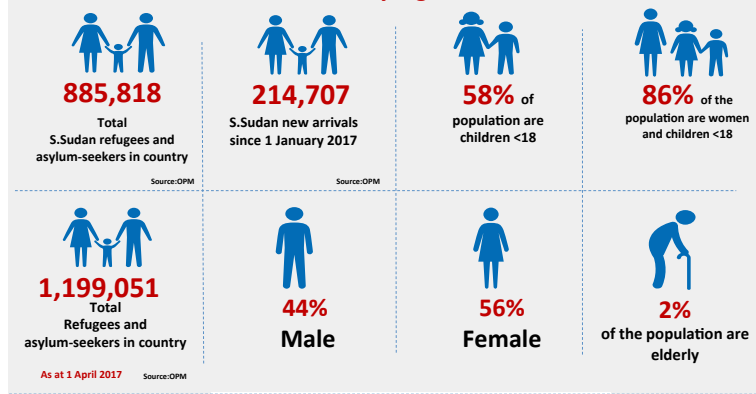
Rhino Settlement  
**86,770**

Bidibidi Settlement  
**272,206**

Imvepi Settlement  
**55,778**

Lamwo Settlement  
**5,738**

## Key Figures



Protection

**15**

SGBV Incidents Reported

**18**

SGBV Survivors Supported

Child Protection

**1,973**

UAMs Reported

**2,880**

Separated Children Reported

**128**

BIAs

**31,267**

Children attending CFSs



WASH

**17**

Litres water/person /day

**25**

Persons / latrine



Nutrition

**454**

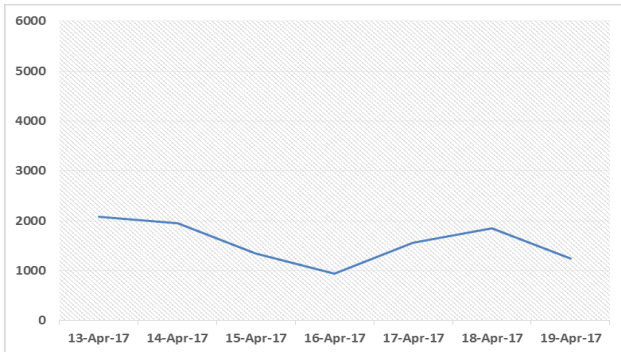
Treated for MAM

**207**

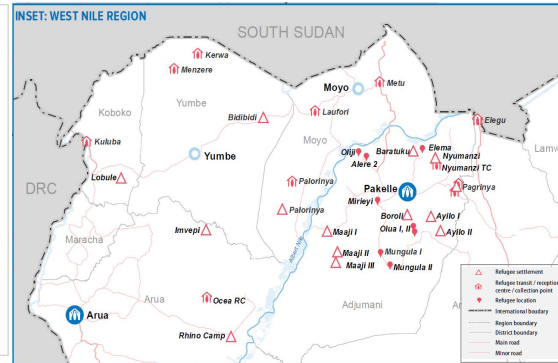
Treated for SAM

\*Data reported on 10 April 2017 (3rd April - 9th April 2017)

## Daily Arrival Trend



## Refugee Locations



## Arrivals by Entry Location (13th April - 19th April)

Date	Elegu Collection Point of Adjumani district	Moyo District	Lamwo District	Kuluba Collection Point, Oraba, Busia border point and Ocea TC	Kerwa, Keyi & Menzere	Gobolo	Total South Sudanese Newly arrived refugees
13-Apr-17	68	462	77	683	306	485	2,081
14-Apr-17	105	448	55	769	201	377	1,955
15-Apr-17	227	359	22	444	185	113	1,350
16-Apr-17	91	188	44	509	100	18	950
17-Apr-17	78	247	86	819	139	199	1,568
18-Apr-17	147	162	83	856	189	407	1,844
19-Apr-17	52	237	54	543	152	207	1,245
<b>Total</b>	<b>768</b>	<b>2,103</b>	<b>421</b>	<b>4,623</b>	<b>1,272</b>	<b>1,806</b>	<b>10,993</b>

## With Donor Support From



Monthly Trends: <http://imuganda.com/dashboard>

Feedback : Fredrick Hanga, HANGA@unhcr.org; Charles H. Matovu, matovuc@unhcr.org

