



Humanitarian needs remain high due to continuing armed conflicts and general insecurity. An estimated 1.5 million people are displaced. Millions of people live in fear and rely on humanitarian assistance for survival.¹

TOTAL:
1.5 million IDPs (as of 30 Jun 2011)^a
887,610 returnees (as of 30 Jun 2011)^a

Equateur Province

Inter-ethnic clashes in Equateur province led to massive displacement in late 2009 and 2010. The situation has recently calmed down with an on-going reconciliation process.¹ Over 120,000 refugees are still settled in neighbouring Congo.²

Area with Enyele communities

Angola Border

Congolese nationals are being expelled from Angola with reports of rapes, physical torture and sexual violence. Humanitarian partners providing basic assistance to the most vulnerable insist that expulsions be carried out in dignity and according to international human rights law.¹

Border with expulsions

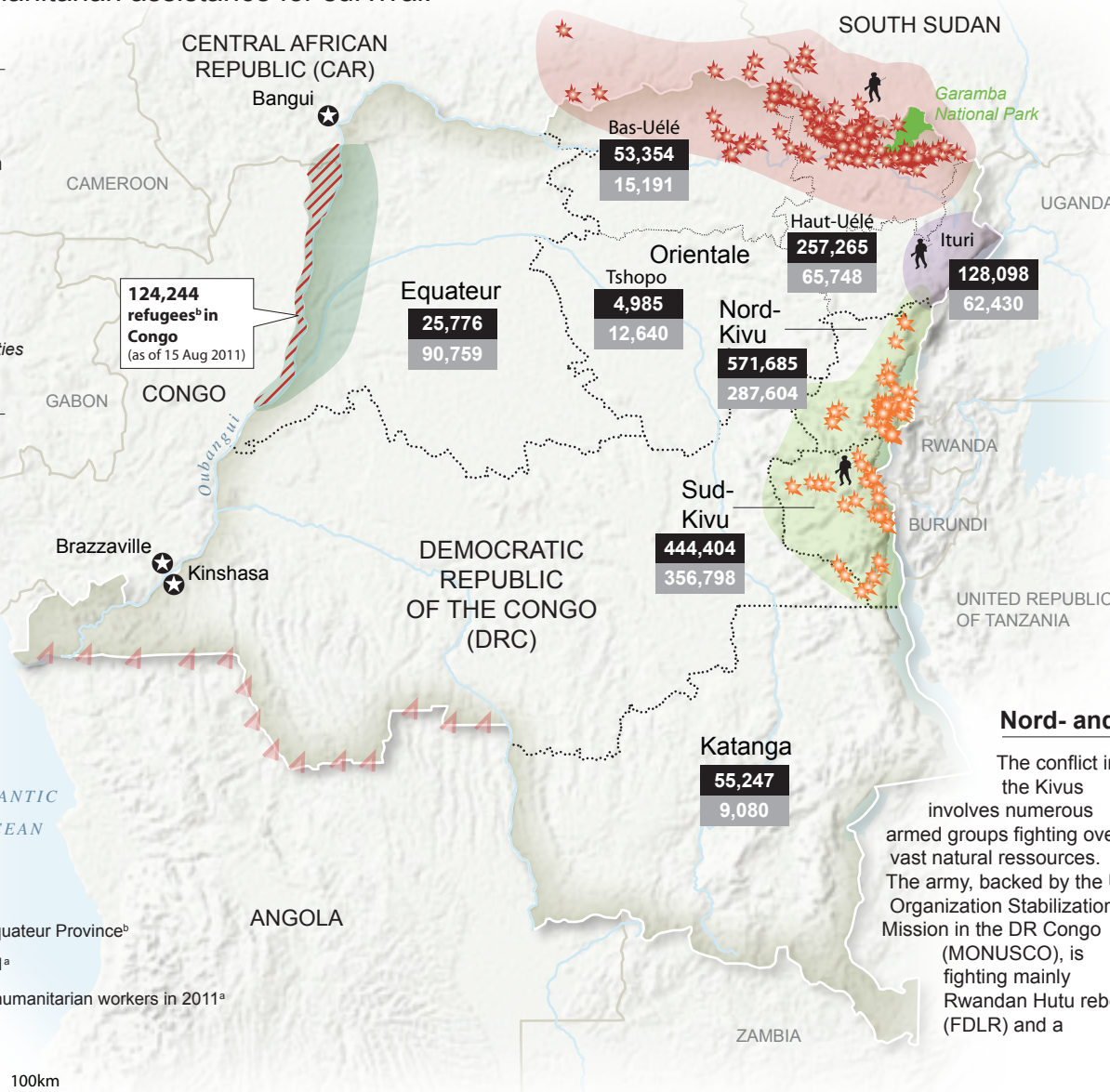
Number of IDPs (as of 30 Jun 2011)^a

Number of returnees (as of 30 Jun 2011)^a

Area with refugees from Equateur Province^b

LRA-related attacks in 2011^a

Security incidents against humanitarian workers in 2011^a

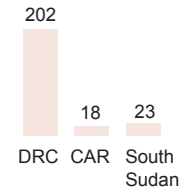


Bas- and Haut-Uélé Districts

The Lord's Resistance Army (LRA) is a rebel group movement formed in 1986 against the Government of Uganda.³ Driven out of Uganda and later Southern Sudan, the LRA operates from the Garamba National Park in DR Congo since 2005, attacking civilians in the Orientale province. LRA is also present in CAR and

South Sudan.⁴ The number of violent attacks has been on the increase in 2011.

Number of LRA attacks in 2011^a



Area with Lord's Resistance Army

327 abductions, including **113** children in 2011^a

Ituri District

The Ituri conflict started as a land dispute between the agriculturalist Lendu and the pastoralist Hema and was particularly intense between 1999 and 2003. Although overall security has improved over the past years, armed groups remain active in the area.⁵

Area with Front de Résistance Patriotique en Ituri (FRPI) and Front Populaire pour la Justice au Congo (FPJC)

Nord- and Sud-Kivu Provinces

The conflict in the Kivus involves numerous armed groups fighting over vast natural resources. The army, backed by the UN Organization Stabilization Mission in the DR Congo (MONUSCO), is fighting mainly Rwandan Hutu rebels (FDLR) and a

collection of other insurgents, with both rebel and army elements being accused of international humanitarian law violations and human rights abuses, including sexual violence.⁶

116 attacks against humanitarian actors in 2011^a

Forces Démocratiques de Libération du Rwanda (FDLR) and other armed groups

Disclaimer:

The boundaries and names shown and the designations used on all maps do not imply official endorsement or acceptance by the United Nations.

Creation date: 13 Sep 2011

Data sources: UNCS, RGC, USGS, Natural Earth, ^aOCHA, ^bUNHCR.

References:

- ¹OCHA DR Congo Office, Feb 2011.
- ²OCHA, *Mouvements de Populations au 31 Decembre 2010*, Dec 2010.
- ³IRIN, *Living with the LRA: The Juba Peace Initiative*, 1 Jun 2007.
- ⁴UN, *General Assembly Security Council A/64/742-S/2010/181*, 13 Apr 2010.
- ⁵OCHA, *LRA: Regional Overview & Update: Jan - Dec 2010*, 17 Feb 2010.
- ⁶OCHA, *Humanitarian Situation in the Orientale Province of the DRC - Snapshot report*, 19 Apr 2010.

Feedback: ochaavmu@un.org
 www.unocha.org
 www.reliefweb.int