

# SOUTH SUDAN CRISIS

CERF allocation overview (2014-2017) As of 15 June 2017

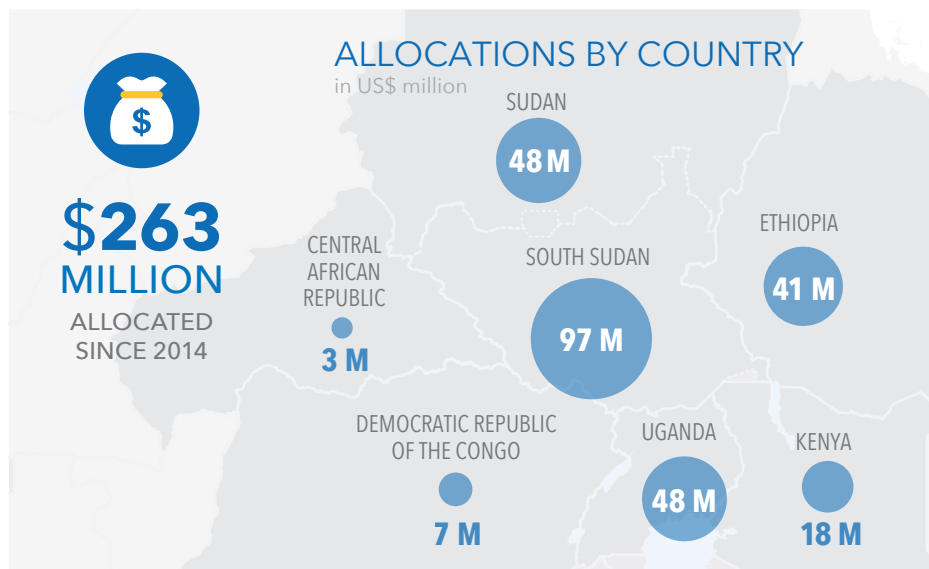


United Nations  
**CERF**

Central  
Emergency  
Response  
Fund

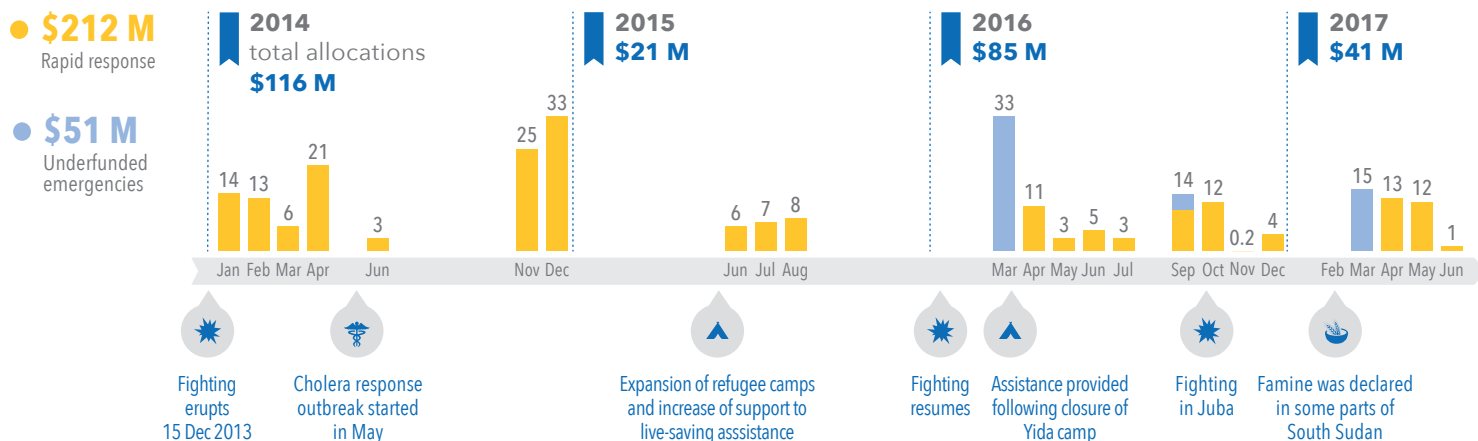
Over 1.9 million people are in need of humanitarian assistance and protection in South Sudan and neighboring countries.<sup>1</sup> Since the beginning of the conflict in December 2013, CERF has allocated nearly \$263 million. With CERF support, UN agencies and partners have delivered \$97 million worth of live-saving assistance in South Sudan and nearly \$165 million to South Sudanese refugees in neighboring countries.

In response to the looming famine in South Sudan in 2017, CERF allocated 16 million to help more than 350,000 people in locations where famine or elevated risk of famine has been declared - as well as areas of new and/or active conflict.



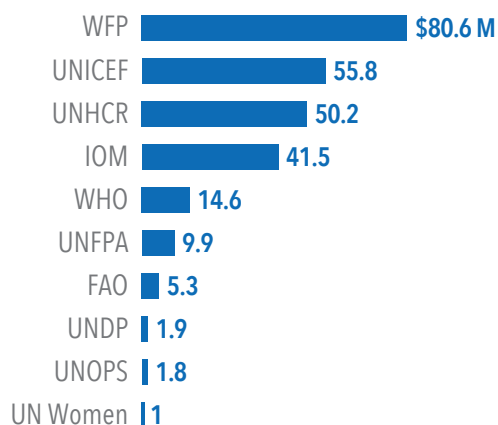
## ALLOCATIONS TIMELINE

in US\$ million



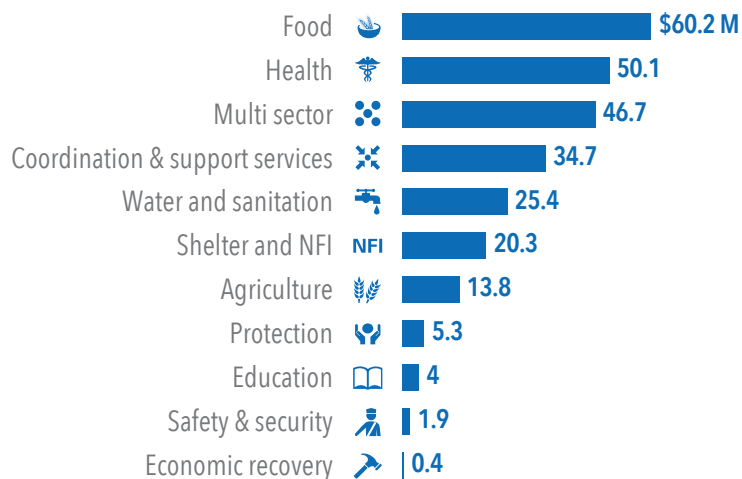
## ALLOCATIONS BY AGENCY

in US\$ million



## ALLOCATIONS BY SECTOR

in US\$ million



The boundaries and names shown and the designations used on this map do not imply official endorsement or acceptance by the United Nations.

Data: <sup>1</sup>Humanitarian Needs Overview 2017, CERF (8 June 2017) Creation: 15 June 2017 Feedback: cerf@un.org cerf.un.org www.unocha.org