



## OVERVIEW

- Camp Corail becomes a community, local authorities take ownership.
- More outbreaks of cholera expected in the West, South and South-East departments.
- Stocks of food, emergency shelters, cholera and nutrition kits completed ahead of hurricane season.



## EARTHQUAKE RESPONSE



IDP

### Corail: from camp to community

The American Refugee Committee (ARC) will complete its phasing out of Camp Corail on 15 May and hand over management responsibilities to local authorities. The site currently hosts 7,500 internally displaced persons at the outskirts of Port-au-Prince metropolitan area.

The withdrawal of ARC is due to the fact that priorities have changed from humanitarian to development that only the Government of Haiti and development partners can address, says ARC. Corail will be gradually integrated as a permanent community into the municipality of Croix-des-Bouquets, following an initial proposal of its Mayor.

According to ARC, the transition to "local ownership" has been well prepared and implemented. All stakeholders, including IDPs, other humanitarian partners and local authorities have been informed and are involved in the transition process that began in January.

A Corail Task Force has been established to ensure a smooth transition period. The Task Force, operational since 1 April, is composed of IDP representatives, local authorities, officials from the Direction de la protection civile (DPC), the Haitian National Police (PNH), the UN Police and key humanitarian organizations, such as IOM, World Vision, Oxfam and Plan.

The International Organization for Migration (IOM), who has been ARC's partner for camp management activities, will maintain a presence with a focus on providing strategic and

coordination support to the Corail Task Force and the community. IOM objective is to ensure that the government-led Task Force has the technical support necessary to successfully incorporate Corail within the municipality of Croix-des-Bouquets.



*As of 15 May, Corail will be part of Croix-des-Bouquets commune. Photo credit: Blagoje Grujic/MINUSTAH*

Corail was created in April 2010 to host extremely vulnerable IDPs from other camps. The first group, representing 60 per cent of current Corail residents, was relocated by IOM and the Government from Terrain Accra and Camp Fleuriot. A second group of vulnerable IDPs came from Tabarre and Croix-des-Bouquets. Transitional shelters, permanent latrines and showers, as well as a clinic and a police station have been built. By June 2011, a deep water well, built by Oxfam-GB, in partnership

with the Direction de l'eau et de l'assainissement (DINEPA), will provide an alternative solution to the expensive and unsustainable water trucking system currently in use.

### **Funding gaps for camp activities totaling \$US36 million**

A funding gap of \$36 million necessary to carry out priority activities in camps until the end of 2011 has been identified. Priorities include camp management, water supply by trucks where alternatives do not exist, maintenance of desludging of latrines, access to mobile health infrastructures, replacement of tents and tarpaulins, protection, and mitigation disaster risk activities in targeted camps. Hundreds of thousands of displaced people have already left the camps since July 2010. From 680,000 today, it is anticipated there will be up to 500,000 people still living in camps at the end of 2011.

### **Access to free drinking water to end soon at Camp Petion Ville Club**

Displaced persons in Camp Petion Ville Club will soon have to pay to have access to drinking water. Oxfam-GB, which manages the water supply for the 35,000 residents of the camp, is gradually withdrawing, reports the Western Regional Office of the Human Rights Section of MINUSTAH.

Oxfam officials have begun conducting information campaigns for camp residents. One gallon of water will be sold for one Haitian Gourde (\$ 0, 025 cents). Oxfam will facilitate the construction of water kiosks while management committees will be established to ensure proper water distribution.

This is part of a nationwide free water trucking exit strategy agreed by humanitarian actors. The strategy focuses on supporting the rehabilitation of public fountains and secondary networks, the drilling of water holes, the installation of hand pumps and the community management of water delivery by truck.

### **IOM receives new grant for employment projects**

An additional US\$ 820,000 funding from the U.S President's Emergency Plan for AIDS Relief (PEPFAR) was granted to the International Organization for Migration (IOM). This grant will further increase the number of employment projects of vulnerable segments of population, including people infected or affected by HIV/AIDS. Those projects are implemented under IOM Programme de revitalisation et de promotion de l'entente et de la paix (PREPEP). Since the 12 January 2010 earthquake, a total of 1,858 jobs have been created through PEPFAR, generating 16,782 person days of employment, of which up to 35% are women.



### **West and South-East departments affected by malnutrition**

Peaks in Moderate Acute Malnutrition (MAM) rates, two to four times higher than the national value, have been reported by the Nutrition Cluster in Cité Soleil, Croix des Bouquets and Grand Goave in the West department, as well as in Jacmel, Bainet and Belle Anse in the South-East department.

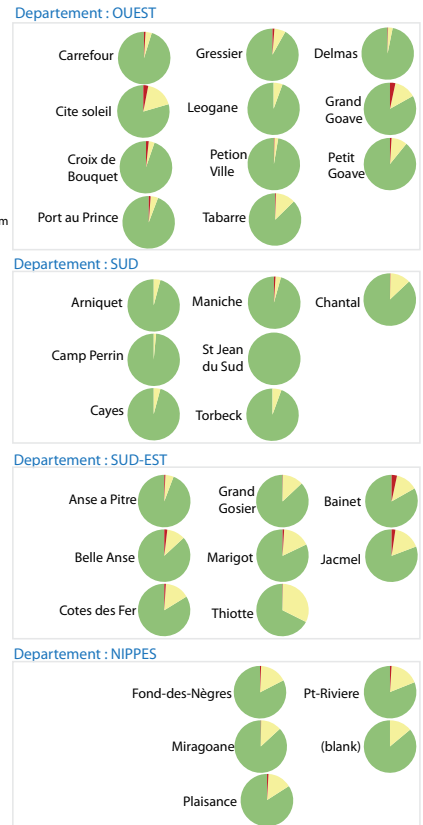
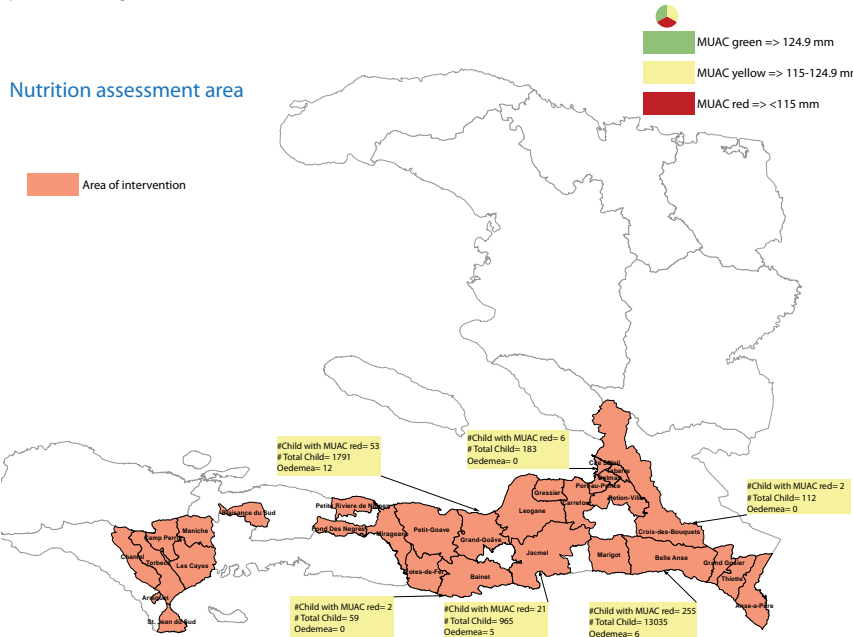
In the first quarter of 2011, screening programs of 97, 467 children in the 31 communes of four departments found that the national prevalence rate for SAM was 0, 9 per cent and 7, 8 per cent for Moderate Acute Malnutrition (MAM). Some of these figures are higher than expected, and may indicate a worsening of the nutritional status as a consequence of protracted vulnerability and food insecurity exacerbated by the recent increase in food prices, according to the Nutrition Cluster.

In March-April, Médecins du Monde-F (MDM) also reported that out of the 345 children aged 6 to 59 months screened, 32 and 7 were suffering respectively from MAM and SAM in the four communes of Pestel, Abricot, Moron and Chambellan in Grande Anse department. This followed an alert published in the OSAGA/SNSA December 2010 Bulletin on Food Security. MDM recommends strengthening preventive services (nutrition, immunisation) at the community level, implementing food distribution for vulnerable households, improving access to health care and supporting farming activities.

**HAITI- Nutrition Cluster: Assessment of malnutrition screening ( As of 06 April 2011)**



Peaks in Severe Acute Malnutrition (SAM) rates, two to four times higher than the national value, have been reported by the Nutrition Cluster in Cité Soleil, Croix des Bouquets and Grand Goave in the West department, as well as in Jacmel, Bainet and Belle Anse in the South-East department. In the first quarter of 2011, screening programs of 97, 467 children in the 31 communes of four departments found that the national prevalence rate for SAM was 0, 9 per cent and 7,8 per cent for Moderate Acute Malnutrition (MAM). Some of these figures are higher than expected, and may indicate a worsening of the nutritional status as a consequence of protracted vulnerability and food insecurity exacerbated by the recent increase in food prices, according to the Nutrition Cluster.



**CHOLERA RESPONSE**

**Outbreaks of cholera expected in West, South and South-East departments**

The number of new cases continues to decrease in the North-West, North-East departments and has stabilized in the North, Artibonite, Center, Grande Anse, West departments and Port-au-prince metropolitan area. However, outbreaks of cases in the South-East and South departments have been observed. This confirms the results from the vulnerability analysis (see map below) conducted by the MSPP, the Pan-American Health Organization (PAHO) and health partners.

While it is difficult to predict the evolution in the number of new cases of cholera in the coming months, important outbreaks of cholera are expected in areas with large concentrations of population and where the risk of water contamination is high, according to a vulnerability analysis from PAHO based on information provided by the Ministère de la santé publique et de la population (MSPP) and health partners.

This is the case in the West, including Port-au-Prince, South and South-East departments. The size of these outbreaks will be determined by the level of access to potable water and sanitary

conditions in place. The impact of these outbreaks in terms of morbi-mortality will be determined by the level of access to prompt treatment. However, it is unlikely that a wave of the same magnitude as the one observed at the outset of the epidemic will occur in Haiti in the next three to five years, according to PAHO.

The MSPP, la Direction de l'eau potable et de l'assainissement (DINEPA), Health and WASH partners are transitioning into long term programming while maintaining an emergency capacity. Cholera outbreaks are followed by periods of variable length during which infection incidence remain stable around low value until the next outbreak, adds PAHO.

Overall, the number of medical staff from health partners has been reduced in most Cholera Treatment Centers (CTCs) and Cholera Treatment Units (CTUs). NGOs are mostly phasing out due to the decrease in the number of cholera cases or lack of funding, reports PAHO. However, irregular payment of salaries by the MSPP to local health staff continues to represent major challenges that could jeopardize the response capacity at local and departmental level in case of sudden increase in the number of cholera cases. Some UN agencies and NGOs

have resorted to provide financial temporary incentives to MSPP staff as a short term alternative.

As of 21 April, the number of deaths is 4,888, and the number of cumulative cases of cholera is 287, 742, according to the MSPP

### **Close to US\$40 million needed to respond to essential WASH and health needs**

According to estimates from the Health and Wash Clusters, \$39,380,000 are still needed to respond to essential needs of the cholera response in the areas of Water, Sanitation and Hygiene (WASH) and health. This unfunded requirement is part of the general \$175 million cholera appeal which is so far 48 per cent funded.

Some \$15 million are needed to support 50 Cholera Treatment Centers (CTCs) and 13 Cholera Treatment Units (CTUs) until the end of the year. A total \$24 million is required to implement WASH emergency and transitional response as well as prepositioning of items. Funding for the "brigadier" who are tasked with actively searching for new cases is covered until June. An additional \$500,000 will be needed to ensure funding of these brigades until the end of the hurricane season in November.

### **Low incidence of cholera on food security in high Artibonite**

The cholera epidemic had a limited impact on household food security in high Artibonite, reports Action against Hunger (ACF) in its assessment report released in April. There is therefore no need to carry out food security activities in the context of an emergency response to cholera, according to ACF.

The study recommends, however, to maintain public awareness campaigns and setting up a food security and agricultural production monitoring system. Target populations<sup>1</sup> are at high risk of food insecurity and increased vulnerability because of the rain season, the approaching hurricane season and cholera outbreaks that are likely to result, the erosion of livelihoods and survival strategies of households and their low production capacity.

It also recommends implementing emergency programs for agriculture capacity building, training in seed production and storage, and increasing the long term resilience of populations to absorb shocks.

The study was conducted between 26 January and 18 March 2011 in four municipalities of the area - Anse Rouge, Gros Morne, Saint Michel de l'Attalaye, and the rural areas of Gonaives. It follows earlier studies completed in the rice production areas of lower Artibonite and lower central plateau by the Coordination nationale de sécurité alimentaire (CNSA), in collaboration with FAO and Oxfam, and ACTED.

These assessments have established a link between the epidemic of cholera and food availability, rising food prices and a shrinking agricultural labor force (see OCHA Bulletin covering 1 - 17 February available at: [haiti.humanitarianresponse.info](http://haiti.humanitarianresponse.info)).

According to ACF, none of the households of high Artibonite lost their source of income due to cholera, most of them depending on two generating income sources. No decline in agricultural activities was observed for households for which farming is the primary source of income (64, 5 per cent). Rarely did cholera prevent or delay work in the fields. However, since the cholera outbreak, farmers who usually work alone feared going to the field. The survey also notes that the incidence of cholera is slightly higher among households who practice irrigated agriculture.

### **Ceremony held in memory of murdered voodoo followers**

A ceremony in memory of voodoo followers victims of mob killing was held on 18 April in Port-au-Prince by Religion for Peace, a platform bringing together different religious congregations, in partnership with UNICEF. More than 50 voodoo followers have been killed since the outbreak of cholera following accusations that they spread the disease with occult power. The ceremony also intended to mobilize religious communities and foster a climate of tolerance and solidarity in the fight against cholera.

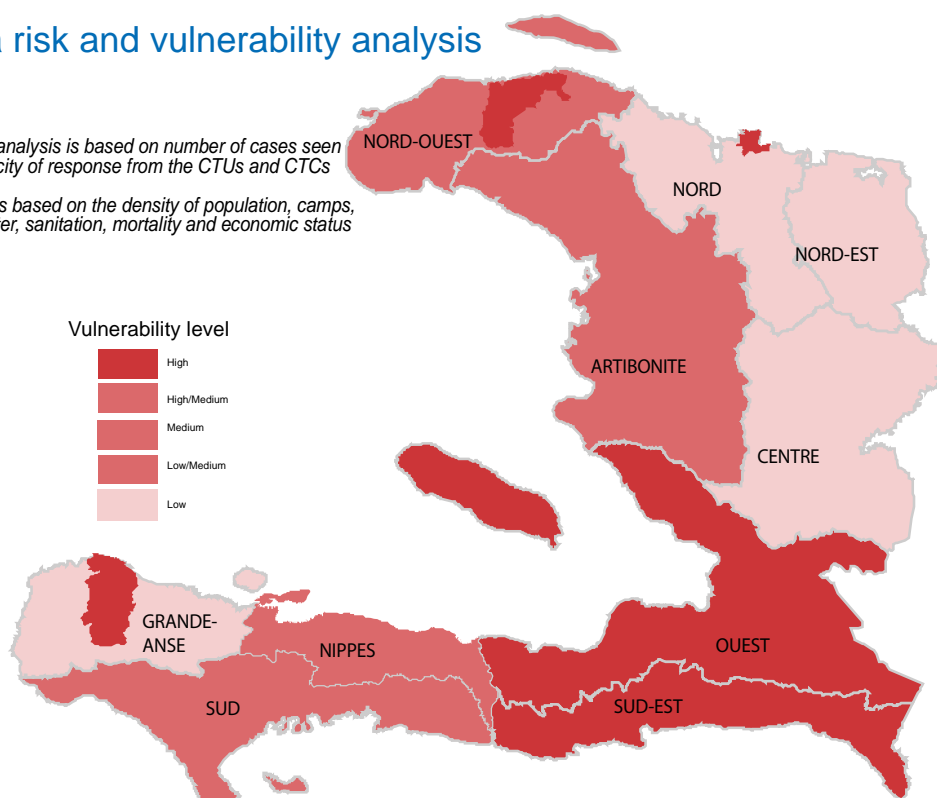
In her speech, UNICEF Representative in Haiti, Françoise Gruloos-Ackermans, emphasized the role that religious communities play in society and welcomed the unprecedented community mobilization that took place to fight the epidemic. UNICEF has signed an agreement with Religion for Peace in December 2010 to support the training of community mobilizers responsible for ensuring the dissemination of prevention messages and the distribution of sanitary items in remote areas.

<sup>1</sup> Directly affected by cholera, vulnerable population, three age groups, host families of individuals affected by the earthquake

## Cholera risk and vulnerability analysis

-Vulnerability analysis is based on number of cases seen and the capacity of response from the CTUs and CTCs

- Risk analysis based on the density of population, camps, access to water, sanitation, mortality and economic status



Sources: for cholera epidemic Gap analysis - April 2011



## CONTINGENCY PLANNING AND EARTHQUAKE RISK REDUCTION

### Enough food, emergency shelters, cholera and nutrition kits in stock; WASH and logistics gaps

According to the latest inter-cluster analysis of basic needs and major funding gaps of the contingency plan ahead of the hurricane season, stocks of food aid rations could cover the needs of at least 500,000 people for 21 days. Stocks of nutritional supplements for children under the age of 5, pregnant and lactating women are enough to cover their needs for 90 days. There are also enough cholera kits and emergency shelter in stock. However, the majority of these stocks are part of the resources available for regular programs and reassessment of stocks will be necessary.

A 42 per cent WASH funding gap has been identified against a backdrop of possible outbreaks of cholera due to the rain and hurricane seasons and anticipated worsening sanitation conditions. Other sectors with major gaps include child protection, education and agriculture, with funding gaps estimated respectively at 86%, 57%, and 80%. A 25 % funding gaps of the Logistics Cluster could also adversely affect the capacity to

effectively respond to needs in remote areas where existing roads could be severely flooded for several days or weeks.

The Logistics Cluster is liaising with the Direction de la Protection Civile (DPC) to find suitable land in Jeremie and Port-de-Paix for the installation of hurricane-proof warehouses. WFP/Logistics Cluster is providing storage space to the Croix-Rouge Haïtienne (CRH) and to the Fédération Internationale des Sociétés de la Croix-Rouge (FICR / IFRC) in Cap-Haitien, Gonaives and Les Cayes for the prepositioning of containers with equipment and tools.

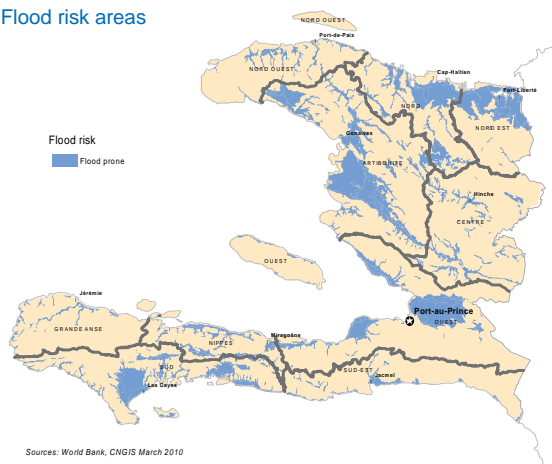
The new inter-agency storage site in the WFP warehouse compound in Port-au-Prince/Tabarre, where nine Mobile Storage Units (MSUs) have been erected, is now used by several partners including UN agencies and NGOs. The United Nations Humanitarian Air Service (UNHAS) ended its operation in Haiti and the Logistics Cluster is currently liaising with commercial air transporters to compile a list of available alternatives for passenger and cargo flights. UNHAS can also be reactivated if need be.

Approximately, 300,000 people could be affected by the hurricane season, according to the DPC, of whom 150,000 will be relocated in temporary shelters.

### Bridges construction underway in Artibonite

The construction of the Bigot and Mapou bridges on the Ennery-Quinte river and the enlargement of the river banks have started in the department of Artibonite. These activities aim at reducing the impact of floods in the city of Gonaïves by channelling the water flow into the sea. The National Meteorological Center is also setting up a weather station in Gonaïves. It will transmit information to the Port-au-Prince meteorological office on rainfall, temperature, humidity and wind speed in the city.

Flood risk areas



### Haiti hosts first Caribbean conference on role of community radio in disaster management

From 4-6 May, Haiti hosted the first Caribbean conference of the World Association of Community Radio Broadcasters (AMARAC) on the theme "Communication, Vulnerability, Disaster Management and Climate Change: The Role of Community Radios". The conference took place in Port-au-Prince with the support of UNESCO, FAO, EED, Oxfam Novib and IMS.

The Conference brought together representatives of Haiti and stakeholders of community radio stations around the world to share their experiences in raising awareness, disseminating information, and supporting their communities before, during and after disasters. It analyzed community radios, NGOs, and governments' best practices in disaster prevention and management, climate change adaptation and mitigation. The Conference issued the Haitian declaration of community radio broadcasters intended to help strengthen community radio movement in the

Caribbean region. For more information visit: [http://www.amarac.org/conference\\_caribeenne](http://www.amarac.org/conference_caribeenne)

### Damages reported following heavy rains and strong winds

According to estimates from IOM, 305 tents were destroyed and 1,250 other were damaged in the seven communes of Port-au-Prince metropolitan area following unexpected strong winds and heavy rains on the afternoon of 28 April 2011. Distribution of tents and non food items (NFI), tarps and hygiene kits took place the day following the climatic event.

Due to the overflowing of the Rouyonne River, some light flooding was also reported in the commune of Léogâne, located 20 km from the capital. Mitigation activities on the river by the Korean battalions of MINUSTAH have been completed. To prevent the flooding of the city and IDP camps that are particularly vulnerable, fourteen km of the river have been dredged and its bank reinforced.

### First roadmap to earthquake safety being developed

At the request of the Minister of Interior, the United Nations Development Program (PNUD) is supporting the development of Haiti's first roadmap to earthquake safety as well as an earthquake risk reduction plan for northern Haiti. The roadmap will be presented and discussed for implementation in July. The risk reduction plan has been submitted to the Interim Haiti Recovery Commission (IHRC). The \$10 million plan include training construction professionals, assessing and retrofitting buildings and infrastructures, educating and training the public on earthquake contingency plans.

Haiti and the whole island of Hispaniola is likely to be struck by more earthquakes in the future, says Eric Calais, a professor of physics at Purdue University and Senior Science Advisor for UNDP in Haiti. Calais also explains that as the response is transitioning from emergency to recovery, specific efforts will have to ensure that earthquake risk reduction would be accounted for in every aspect of the reconstruction phase. This is all the more crucial that we know that where earthquakes happened in the past they will happen again in the future, he says.

Back in 1946, a magnitude 8.0 earthquake struck the northern Dominican Republic causing a tsunami that killed 1,000 people. Further back in time, Port-au-Prince was destroyed twice in 1751 and 1770 by earthquakes equal or larger than the 12 January event.

Since January 12, earthquake risk reduction activities in Haiti have scaled up. In March 2010, the susceptibility of ground shaking in Port-au-Prince metropolitan area has been assessed and mapped, which Calais calls a milestone. Similar mapping will be soon available for all major urban centers. Haiti is also in the process of having and operating its own seismic monitoring network

### **First joint natural disaster exercise simulation**

The first joint natural disaster exercise of the year was conducted from 12 to 15 April in Port-au-Prince, Gonaïves and Léogâne. The exercise was successful at bringing Haitian authorities together with humanitarian agencies and MINUSTAH personnel to solve a simulated crisis in the event of a real crisis. Two more exercises

are being planned with Haitian authorities for the coming months.

Key issues identified include limited internet bandwidth capability at the Expanded Joint Operations Tasking Center (EJOINT) and the Regional Joint Operations Centers (RJOCs), language issues during radio communications, and information transfer between agencies and operation centers was at times too slow. The exercise identified the need for a more comprehensive and practical relocation plan for vulnerable population at risk, particularly camp residents in flood prone areas, in case of a major storm. The exercise also highlighted the need for rescue boats if cities such as Gonaïves, Léogâne and Port-au-Prince were flooded.

#### **Contact Information:**

Head of OCHA Haiti: Philippe Verstraeten  
 Email: verstraeten@un.org  
 Tel: (509) 3702 8746

Spokesperson/ Public Information Officer: Emmanuelle Schneider  
 Email : schneider1@un.org  
 Tel : (509) 3702 5176

Public Information Officer: Rachelle Elie  
 Email : elie@un.org  
 Tel : (509) 3702 5177

Reporting Officer: Abdourahmane Diallo  
 Email: diallo57@un.org / ocha.haiti@gmail.com ,

For more information on the response in Haiti, please visit:  
<http://haiti.humanitarianresponse.info>

United Nations Office for the Coordination of Humanitarian Affairs, (OCHA), Boulevard Toussaint Louverture et Clercine 18, Port-au-Prince, Haiti.