

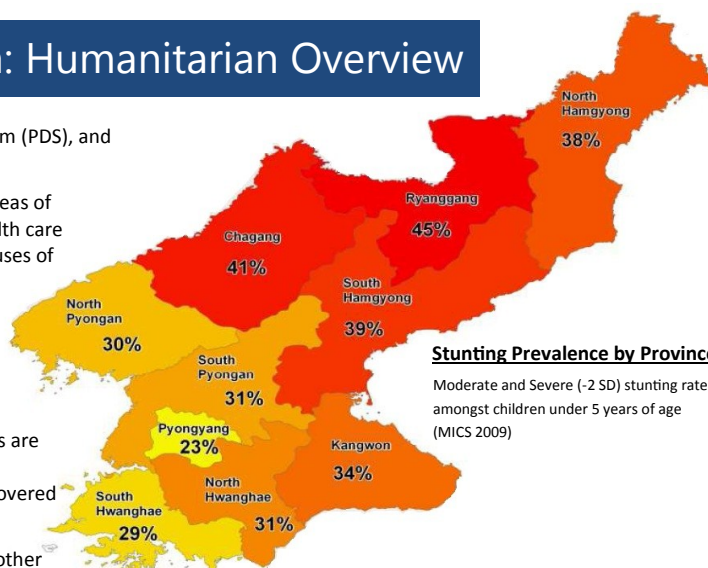
Democratic People's Republic of Korea: Humanitarian Overview

May 2012



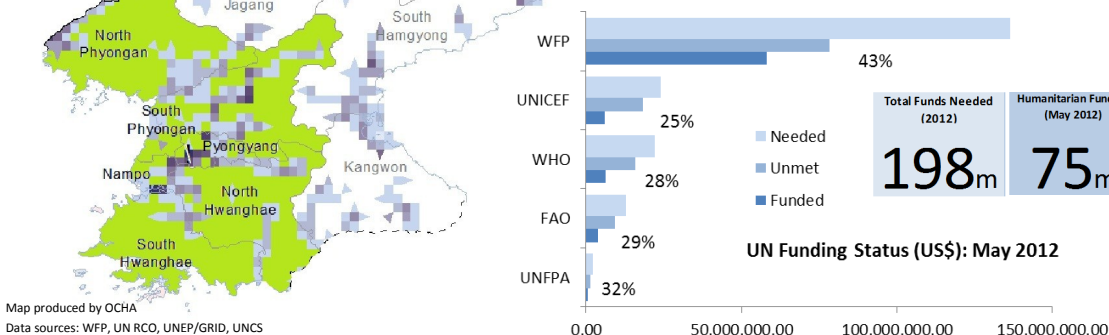
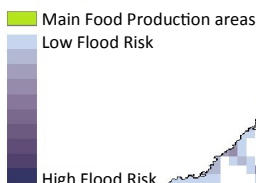
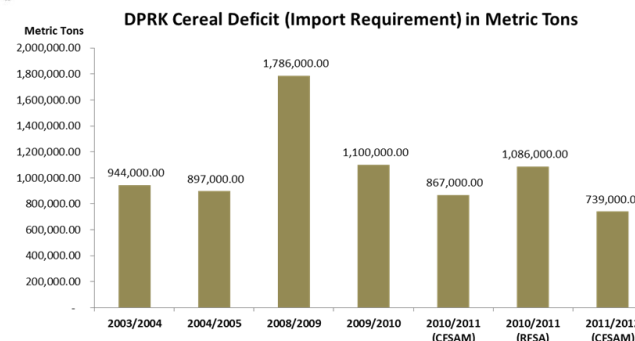
Situation Overview

- Around 16 million people (66%) depend on the Public Distribution System (PDS), and are therefore considered chronically food insecure, at various degrees.
- DPR Korea faces a multiplicity of health challenges, particularly in the areas of maternal, child and reproductive health, compounded by degraded health care infrastructure and lack of drugs. Diarrhoea and pneumonia are main causes of deaths among children under-five,
- External assistance is still needed and continues to play a vital role in safeguarding and promoting the well-being of millions whose nutritional status and general health would otherwise be seriously compromised.
- Around two million people in the most food insecure provinces/counties are receiving nutritious food assistance. The cereal deficit for the 2011/12 marketing year has been estimated to be 739,000 MT leading to an uncovered cereal deficit of 414,000 MT (CSFSAM 2011).
- DPR Korea continues to display high rates of malnutrition compared to other countries in the region; a Mid-Upper Arm Circumference (MUAC) exercise conducted in selected counties in November 2011 showed a GAM rate of 14.1% and SAM 1.6% for children under-five compared to the national prevalence of 5.2% (GAM) and 0.5% (SAM) recorded in 2009.



Stunting Prevalence by Province

Moderate and Severe (-2 SD) stunting rate amongst children under 5 years of age (MICS 2009)



Strategic Priorities

- Support life-saving humanitarian assistance in nutrition, health, water, and sanitation and agriculture while providing essential support to address underlying developmental drivers of the chronic challenges that increase vulnerabilities,
- Support dialogue with all partners to analyse and advise on policies that impact long-term vulnerabilities,
- Improve operational conditions and infrastructure to harmonise and widen the access for UN agencies,
- Strengthen policy-support and assistance to collection, analysis and dissemination of credible data for evidence-based targeting of interventions,
- Maintain a standing capacity to support national response to natural disasters.

Basic Facts

Population: 24.1 million
Number of chronic poor: 7.2 million (37%)
Estimated average annual growth rate: 0.85%
Average life expectancy: 69.3 years
Men: 65.6 years
Women: 72.7 years
Literacy rate: + 99%
Urban population: 61%
Under-five mortality rate: 25.7 per 1000 live births
Maternal Mortality rate: 85 to 250 per 100,000 live births (depending on estimate)
Diarrhoea prevalence rate: 19%

Other Agencies operating in DPRK:

UNDP, Première Urgence - Aide Médicale Internationale, Save the Children International, Concern Worldwide, Deutsche Welthungerhilfe, Triangle Génération Humanitaire, Handicap International, Italian Development Cooperation Office, Swiss Development Cooperation, IFRC and ICRC.

Timeline

	Jan	Feb	Mar	Apr	May	Jun	Jul	Aug	Sep	Oct	Nov	Dec
Major Foodcrops:	Rice	Rice	Rice	Rice	Rice	Rice	Rice	Rice	Rice	Rice	Rice	Rice
	Maize	Maize	Maize	Maize	Maize	Maize	Maize	Maize	Maize	Maize	Maize	Maize
	Potato	Potato	Potato	Potato	Potato	Potato	Potato	Potato	Potato	Potato	Potato	Potato
	Soybean	Soybean	Soybean	Soybean	Soybean	Soybean	Soybean	Soybean	Soybean	Soybean	Soybean	Soybean

Sources: CFSAM 2011, MICS 2009, FTS, UNFPA, CENSUS 2008, WFP.